

# THE WYLAM GLOBE

Newsletter of Wylam Parish Council

Number Eleven

Quarterly

January 1976

## LOCAL BUS SERVICES

Reductions have recently been made in the frequency of the Northern General (formerly Venture) bus service 607 to Crawcrook and Greenside, and it seems likely that, unless the number of passengers using it increases, serious consideration will have to be given to its future.

Surveys carried out in July and October showed that few people used the service and that the average number of passengers between Wylam and Crawcrook was 3 or 4 persons. This has resulted in its running at a loss of about £200 per week.

In view of this, a revised service was introduced on 1st November, involving substantial reductions from an hourly service to around two hourly, with a withdrawal of evening services after 7.25 p.m.

The current service, although reduced, makes better use of the bus company's resources and provides an improved link for people from the Crawcrook direction with the rail service at Wylam Station. "United" service 480, which runs from Newcastle to Kimberley Clark's at Prudhoe, continues to provide an early morning and late evening service. Crawcrook and Prudhoe are linked by a 15 minute frequency service by United buses.

The Parish Council have recently stressed to the County Council the importance of a regular service from Wylam to Prudhoe, (particularly for the School and other facilities in the town) and discussions are being held over improvements to the services in the Prudhoe area.

Copies of the current timetable of Service 607 from North Wylam to Greenside are available free from the Post Office. We hope that we can encourage a few more people to use this service—and thus help to protect it from further reduction!

## BOOKWORMS AWAKE

One of the biggest gaps in the range of community facilities in the village has been the absence of an adequate library service. This deficiency should be remedied by the County Council's decision to use part of the old school on Falcon Terrace as a library. Restrictions on local authority expenditure are likely to prevent the complete conversion of the building taking place for two or three years, but minor alterations will be carried out, and temporary shelving provided in the next month or two, so that by the time the next issue of this newsletter appears (in April) a much improved library service should be available in part of the old school. (Details of the opening hours for the "new" library will be publicised when they are known.)

The Youth Club will continue to use part of the building and it is also hoped to accommodate the Clinic, and perhaps the Nursery School.

Discussions have recently taken place with officials of the County and District Councils about the future use of the land west of the old school—and the possibility of devising a satisfactory scheme which could incorporate both a new access (with limited parking on the same level as the entrance) and space for several new bungalows.

## NO INCREASE IN THE PARISH RATE

The Parish Council have agreed that there is no need to increase the present Parish rate—it will be kept at its present level of 2p for the forthcoming year. This will provide sufficient funds to enable the Parish Council to meet its share of the cost of the work on the waste ground next to the Dene Estate shops and to carry out several other small improvements in the village as well as the normal range of activities.

However, it is quite unrealistic to expect the County Council and District Council rates to remain static—the cost of local authorities services are just as badly hit by the rocketing rate of inflation as anyone else.

## CYCLING CIRCLES

Wylam and District Ladies Circle would like to thank everyone who supported their St. Trinians Bicycle Ride. £80 was raised, some of which has been used to buy Christmas presents for a local Children's Home. The remainder will be used for other charities.



Can you recognise the three "Wylam Belles" in this group?  
(Reproduced by kind permission of Mr. H. D. Edgar of Hexham.)

## GARDEN BONFIRES

Some residents seem to find it necessary to have frequent bonfires in their gardens to burn rubbish. Whilst there are no special local controls over bonfires, please remember that these can sometimes cause a nuisance to others living nearby (particularly those with babies and young children and long lines of washing) and avoid lighting your bonfire when it is likely to annoy neighbours.

## STREET LAMPS

First dogs, second litter, third street lamps—that's the order for the number of complaints received by the Parish Council.

Of these three problems, the one which is at present (during the winter months) causing most concern, is street lighting. Nothing causes more public annoyance in these days when everyone is told to "Save Energy" than to see street lamps burning at mid-day but off at night.

At present all the street lamps in the village are individually controlled by time switches, which means that whenever there is a power failure, all the time clocks of the lamps within the area affected have to be adjusted. This is both costly and time-consuming. A cheaper and more satisfactory alternative is to use photo-electric units instead of time switches. The photo-electric cell units automatically switch on at dusk and off again at dawn—and are not affected by power failures.

The County Council are intending to replace all time switches with photo-electric units in street lamps throughout the county over the next few years, and the Parish Council have requested that priority should be given to doing this on main roads through the village.

By using long-life mercury or sodium discharge lamps instead of the traditional metal filament bulbs, the frequency of lamp failures should be reduced.

Therefore, by replacing time switches with photo-electric units, and using mercury or sodium discharge lamps instead of metal filament bulbs, many of the problems which are giving rise to numerous complaints at the moment should be reduced.

Unfortunately, this work will probably take a year or two to complete, and in the meantime don't forget the person to contact about faulty street lighting is:—

County Lighting Officer,  
c/o The County Surveyor,  
Phoenix House,  
Queen Street,  
NEWCASTLE. (Tel. Newcastle 610064.)

but remember to give an accurate description of the position of faulty lamps.

## UNDER FIVES

Mr. E. Ford, Headmaster of Wylam First School, would be grateful if parents of children who will be five years old between 1st September 1976, and 31st May 1977, would get in touch with him, either by letter or telephone, and give him details of the child's date of birth and address, so that he can make advance arrangements.

## WANT A JOB?

Discussions have recently been held between the Parish Council and the County Council National Park and Countryside Department (who will be responsible for the future maintenance of the former Wylam-Newburn railway track, as a walkway) to consider the joint management and supervision of the former railway track, and the areas of open space on the riverside owned by the Parish. It is intended to make bye-laws to control activities which might cause a nuisance, and the County Council are proposing to appoint a part-time warden, who would be responsible for keeping an eye on the use of the walkway and on the riverside areas in the village, for ensuring that the bye-laws are observed, and probably picking up litter from these areas.

The job would be part-time, involving some work at week-ends and school holidays, when the use of the track and riverside areas would be greatest.

Although full details of the job and pay have not yet been finalised (and may not be for two or three months), it might be suitable for a fairly active local resident. Anyone who thinks they might be interested in the job, should write to the National Park Officer, Bede House, All Saints Centre, Newcastle, as soon as possible.

Incidentally, work on re-painting the old railway bridge over the river at Hagg Bank will be completed in the spring.

## WHAT'S ON IN WYLAM

### JANUARY

Sunday	25th	Bible Class Anniversary — 6.30 p.m. Old Schools.
Tuesday	27th	"Northumbrian Pipes" A talk and demonstration. 7.30 p.m. in Institute.
Saturday	31st	Conservatives Jumble Sale, Institute.

### FEBRUARY

Friday	6th	Pop Night, Church Hall.
Tuesday	24th	"Old Tyneside"—a coloured slide show 8 p.m., Institute.

### MARCH

Friday	5th	P.T.A. Dance at New School.
Thursday	19th	Lemington Male Voice Choir—Concert 7.30 p.m., Institute.

*These activities have been selected from the Village Diary. Any organisation arranging activities in the village is requested to let Mrs. Hurd (Tel. 2563 after 5 p.m.) know beforehand—so that these can be included in the Diary. Anyone wanting events including in the "Globe" is asked to let us know.*

## PLAYING FIELD

A progress report from Alasdair Kemp:—

"The new layout has taken shape, and the grass is coming up. The water which lay on the surface caused some alarm, but we know that underneath it is dry, that there is adequate drainage, and when the grass is established the problem should cure itself. Final cultivation will take place in the spring, when the remaining areas will be planted. The hardplay area and the adjacent wall, and much other finishing work is in hand. The field should be ready for use in early Summer 1977. Until then please give the grass a chance to establish itself; the less it is walked over, the better.

We should like to thank all those who have already contributed to our appeal. Many people have been generous.

We are pleased to welcome several new committee members, among them our new Secretary, Greg Smith, 74 Dene Road (Telephone 3695.)"

## ROUND TABLE ACTIVITIES

Encouraged by the success of the Stephenson Day Carnival in August, the Round Table have continued to organise several local activities to raise funds for charities.

The first was a Hallowe'en Fancy Dress Dance, the proceeds of which were used towards a firework display and barbecue for the children at Stelling Hall Children's Home. The following week, the Tablers organised the Grande Finale Dance to complete the programme of events in Community Week, and nearly £80 was raised for the Institute funds from the dance.

The main beneficiaries from the success of the Stephenson Day Carnival are the Tynedale Accident Unit and the residents of the new flats at Brewery Court, Wylam—built by the Anchor Housing Association.

A cheque for £200 was presented to Drs. Thicknes and Harle of the Tynedale Accident Unit early in December, and this money is to be used towards buying equipment. £300 is being donated for the benefit of the Brewery Court residents, and £50 to the Tyneside Society for Autistic Children. A number of smaller donations are being made to local organisations.

Just before Christmas, the Table decorated a float and toured the area playing Christmas Carols. The money raised from the door to door collection was put towards providing food parcels for the elderly.

Members of the Table would like to thank everyone in the area for their support in the last 12 months, and for helping to make 1975 a memorable one for Wylam and District Round Table.

Keep up the good work in '76, Tablers!

## COMMUNITY HEALTH COUNCIL

Very few people would claim to understand the structure of the National Health Service since it was re-organised nearly two years ago. One local resident, Jean McCallum, is closely involved with it, as the Chairman of the Tynedale Sub-Committee of the Northumberland Community Health Council, and she describes below some of the work that the Health Council is doing:—

"The Northumberland Community Health Council has just completed its first full year and has made its report to the Regional Health Authority. The Council represents the interests of users of the Health Services in Northumberland and must be consulted by the Area Health Authority (A.H.A.) when substantial developments are planned—the Council has also the duty of helping the A.H.A. to interpret its objectives, plans and priorities in the community.

Because Northumberland covers such a large area, the Council is divided into Sub-Groups—the Tynedale Sub-Committee covers the same area as Tynedale District Council, so as well as taking an interest in services provided in clinics and health centres, we have a special interest in Hexham General Hospital, Prudhoe Hospital, Charlotte Straker Hospital, Hexham War Memorial Hospital and Wooley Hospital, and the group visit all of these hospitals regularly. We meet patients and staff and try to form an opinion on the quality of the services provided. This in turn must depend partly on the physical facilities—buildings, equipment and so on—and partly on a satisfactory background in which staff can function effectively and happily.

Over the past year the whole Council has considered the health care of the elderly, chiropody services, the provision of in-patient facilities for disturbed adolescents, the use of hospital trust funds and many other subjects. The Tynedale sub-committee has taken a special interest in the provision of an additional consultant at Prudhoe Hospital and has supported the staff at Hexham General Hospital in their plea for extra accommodation for nurses to be provided as soon as possible. In our visits to clinics, we have passed on comments on substandard buildings and long waiting times—we are currently in communication with the Family Practitioner Committee over a message from Ovingham Parish Council that elderly people in Ovingham and Ovington find it difficult and expensive to travel to surgeries elsewhere.

We have taken a keen interest in the provision of improved clinic facilities in Wylam and hope very much that more comfortable premises in the former Wylam Primary School buildings in Falcon Terrace will be provided shortly. Our duty is to act as a "patient's friend"—sometimes we hold open "surgery" sessions which are advertised in the Hexham Courant as are the names of the eight people on the Tynedale Sub-Committee, and all of us are happy to be approached by members of the community with queries or suggestions about Health Service facilities. If we can't help you ourselves, we can put you in touch with someone who can."

## SOMETHING DRAMATIC

About 18 months ago, Wylam Amateur Dramatic Society made a welcome come-back after a lapse of several years. Since then a growing membership of enthusiastic drama lovers has produced four plays. Barbara Rudgard, the Secretary, has kindly contributed the following short article on what the Society is doing:—

"The first production, the Philip King farce, "I'll Get My Man," will be remembered by the village as the only time the "Vicar" appeared in public without his trousers! In April of last year, the Society's reputation was firmly established with an ambitious presentation of Neil Simon's "Barefoot in the Park." In May the Society entered "Careful Rapture" (seen by Wylam audiences in the recent Community Week Concert) in the Kielder Drama Festival. A hurriedly assembled company worked very hard to earn a most creditable second place, only one point behind the winners. Our most recent production—"Candied Peel" by Falkland J. Cary, saw a change from the pure comedy of previous productions. Whilst still providing its fair share of amusement, it was essentially a "Whodunnit." The continual flow of red

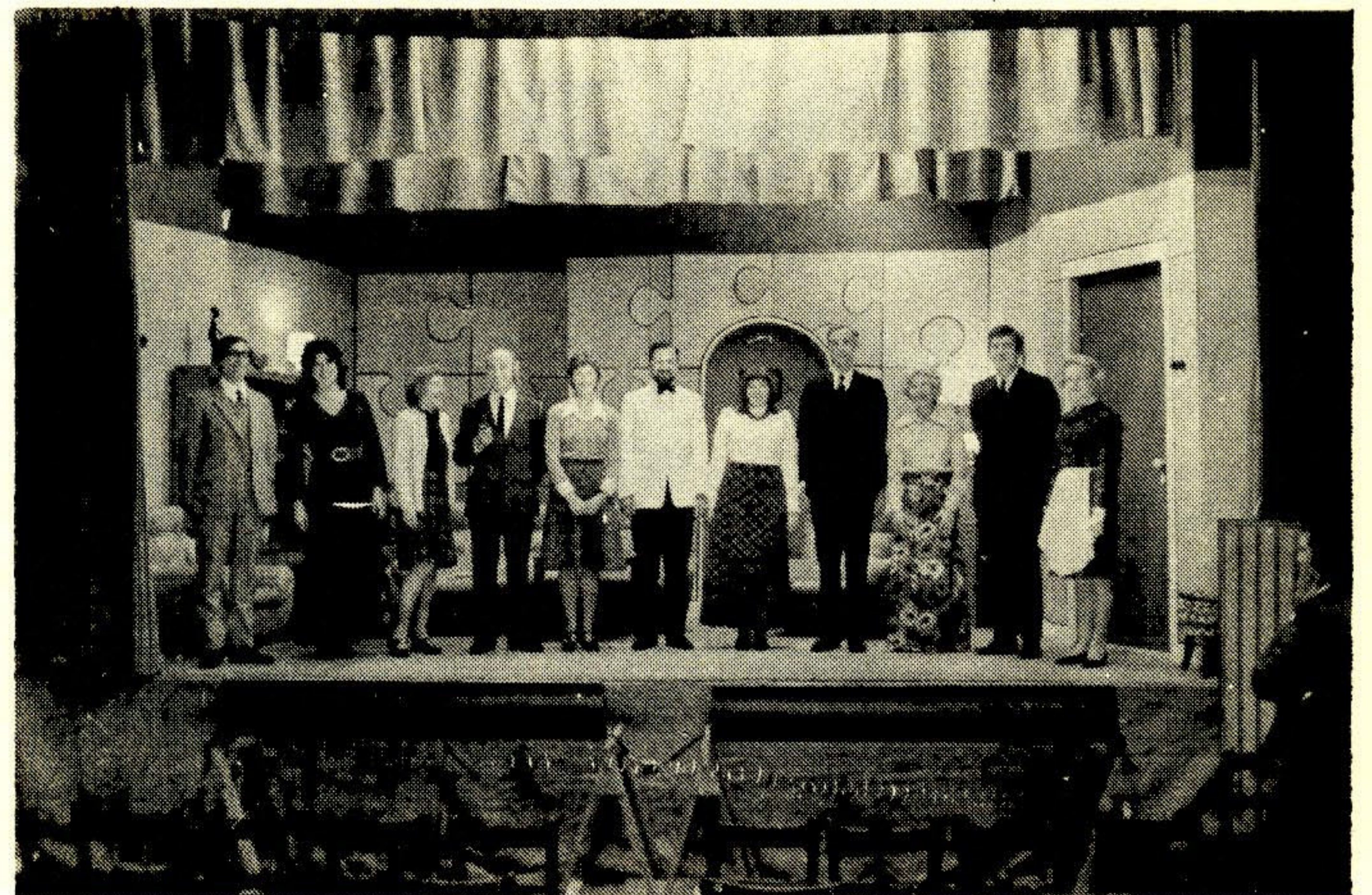
herrings puzzled the most sleuthful members of the audience. Even those who did manage to guess "whodunnit", surely did not foresee the eventual outcome, when, by agreement with the author, the producer, David Taylor, provided his own version of the last scene and exterminated most of the cast. I wonder why...?

The Society's activities are not confined to producing plays. Visiting speakers are invited to give talks on allied subjects, visits are made to the productions of other amateur societies, and it is intended to organise outings to Newcastle theatres for all who might be interested.

The scope of the Society's activities is, of course, governed by the size of its membership. We want to make an even greater contribution to the life of the village and to do that we need more members, so if you are interested in drama, why not join us. No previous experience is necessary. We need not only actors but back-stage staff, make-up artists, business organisers—in fact anyone who is interested in the theatre.

We meet every Monday at 8 p.m. in the Institute."

Anyone interested in joining us or who would like further information, please contact me (Barbara Rudgard) at 21 Woodvale Gardens, (Tel. 2308.)



The cast of "Candied Peel"

## ANY OFFERS OF HELP?

The shop at Prudhoe Hospital run by the W.R.V.S. is short of helpers at the moment and Mrs. Mitchell, the organiser, would be very interested to hear from any ladies who could spare a morning or an afternoon once or twice a month to join the team there—it is also open on Saturday and Sunday afternoons. The work involves selling confectionery, cigarettes and fancy goods to the mentally handicapped patients and the staff who look after them, and making hot drinks for the customers to enjoy in the cafe. Getting from Wylam up to the hospital is a problem, but a petrol allowance is paid and Mrs. Mitchell would also welcome offers of help with transport, possibly from retired people in the village? Her telephone number is Prudhoe 33021 during office hours, or you could contact Heather Hurd (Tel. 2563 after 5 p.m.) or Jean McCallum (Tel. 2210.) All profits from the shop will be given to the hospital for the benefit of the patients.

## STILL ONLY ONE

It had been intended that from May, Wylam would have two members on Tynedale District Council. At present we have only one—Peter Bennett.

However excessive delays by Whitehall (the Home Office) may deprive the village of its rights to a second district councillor, until the elections in 1979. But whether we elect one or two District Councillors on 6th May it is reliably rumoured that all three main political parties will be putting up candidates, so there should be plenty of choice to suit all tastes. We hope for a clean fight, without any extravagant promises, and may the best person win!

(News of the Home Office delays arrived after Councillor d'Ambrumenil's newsletter was printed.)

## FROM JERSEY TO WYLAM

When we chose the name "Globe" for this newsletter 2½ years ago, it was because of the close association of the Blakett family (who were the Squires of Wylam from 1679–1972) with an important 19th century London newspaper called "The Globe."

However, the name seems to have been a good choice for other reasons as well—in particular its wide circulation. Copies are sent to U.S.A., Canada, South Africa, Australia, and probably other countries as well.

Several residents regularly send copies to friends and relatives living in this country and abroad. One who does this is Mrs. Mills of 5 Hedley Road, who sent a copy of our last issue to her daughter, Mrs. Joan Lempriere—a former Wylam resident, now living in Jersey, Channel Isles. Mr. and Mrs. Lempriere saw our request for gifts of daffodil bulbs, and very kindly sent several hundred Jersey grown bulbs for planting in the village. Thank you, Mr. and Mrs. Lempriere, for your generous gift.

With those being planted by Mr. Coates on Station Road, and those planted by the Housewives' Discussion Group, the Youth Club and other volunteers, (thank you to all who helped) and the recent gift from the Channel Isles, over 1,000 bulbs will have been planted throughout the village.



Local Volunteers planting daffodil bulbs

## SCHOOL PARENT TEACHERS ASSOCIATION

At the Annual General Meeting in October, a new Committee was elected and has considered ways and means of raising funds—and also how the income from previous activities might be spent to benefit the school.

It has been decided to use some of the money to pave the inner courtyard in the centre of the school (an area which was never satisfactorily laid out when the school was built) and an order has been placed with Prudhoe Hospital for the production and supply of the paving stones required. If there are any parents (or other residents) who have had experience in laying paving stones, would they please contact Mr. Eric Ford, Headmaster at the school, as the P.T.A. would be most grateful for any advice and/or assistance.

Money has also been allocated to buy desk music stands for the recorder groups at the school.

In the present difficult economic situation, the funds available for provision of materials and equipment in schools is restricted, and the help and support which the P.T.A. can give is very much appreciated by the School Managers, the Headmaster and staff, and, of course, the pupils.

So please continue to support the various functions. Among those planned for 1976 are a Dance, and a Beetle Drive and Whist Drive. (See Village Diary.)

The successful film shows will continue and will be advertised in the village. Anyone is welcome to attend.

*All correspondence relating to this Newsletter should be addressed to Mrs. D. Fairless, The Clerk of the Parish Council, 31 Falcon Terrace, Wylam.*

Printed for Wylam Parish Council by  
The Gilpin Press, Houghton-le-Spring

## MAN'S BEST FRIEND???

Some people lavish more affection on dogs than they do on other humans—others regard dogs as a serious public nuisance and health hazard. They give rise to strong feelings in some people—one local resident (who is also a dog owner) complains:—

"The problem of uncontrolled dogs roaming around the village is getting worse, and the hazards from this are threefold:

1. The risk of causing a traffic accident.
2. Young children being frightened.
3. The disgusting condition of fouled footpaths, pavements and grassed areas, and the resulting health hazard.

Publicity has recently been given to the dangers to health, particularly to children, caused by contact with dogs' faeces. This emphasises the importance of ensuring that paths and grassed areas are not fouled. If properly trained, exercised and controlled it should be possible for owners to make sure that their dogs do not foul these areas.

So please, dog owners, TAKE Fido out, don't just put him (or her) out!

Many have enquired whether there are any bye-laws relating to the control of dogs in Wylam—Yes, the following bye-law (which we quote in full) has been in operation since 1970.

### FOULING OF FOOTWAYS BY DOGS

1. *In the Parish of Wylam no person being in charge of a dog shall allow the dog to foul the footway of any street or public place by depositing its excrement thereon. (Provided that a person shall not be liable to be convicted of an offence against this bye-law if he satisfies the Court that the fouling of the footway was not due to culpable neglect or default on his part.)*

2. *For the purpose of this bye-law the owner of the dog shall be deemed to be in charge thereof, unless the Court is satisfied that at the time when the dog fouled the footway it had been placed in, or taken into the charge of some other person.*

3. *Any person offending against the bye-law shall be liable on summary conviction to a fine not exceeding £20.*

It will be seen that this relates only to public footways (the possibility of making similar bye-laws to cover playgrounds and grassed amenity, is to be investigated.)

You should report to the police (at Prudhoe or Hexham Police Stations) any cases where you see an offence being committed against this bye-law. Remember that the Police will require the following information—i.e. a description of the dog, the name and address of the dog's owner, the time and place where the offence was committed, and the name and address of an independent witness. It is advisable to confirm this information in writing to the police, and also to ask them to notify you of the action they subsequently take.

However if, after reporting it to the police you find them unwilling to take action, please send full details to the Clerk of the Parish Council, so that the Council can, if necessary, pursue the matter.

A police warning, or prosecution of two or three offenders may work wonders in cleaning up the village!

## WASTE GROUND

Following the purchase by the Parish Council of the waste land between Jackson Road and the Dene, the County Planning Department have agreed to survey the site and prepare two or three sketch designs showing how it might be laid out after reclamation.

There should be sufficient space to include provision for a play area as well as a landscaped sitting-out area, without nuisance to others.

Before any scheme is agreed, the plans will be displayed and publicised (probably in the Institute) to enable anyone interested to inspect them and comment on them.