

THE WYLAM GLOBE

Newsletter of Wylam Parish Council

Number Twelve

Quarterly

April 1976

ELECTIONS—May 6th

Polling day for the Parish Council and District Council elections is Thursday, May 6th. The Polling Station is the new school in Bell Road.

Pressure from both District and Parish Councils and help from our M.P. eventually ensured that the authorisation necessary for the village to have two District Councillors was approved by the Home Secretary without further delays.

There are six candidates for the **two** seats on the Tynedale District Council, and **eleven** candidates for the **eight** seats on the Parish Council.

The six political candidates for the District Council election will presumably be distributing their own leaflets, but since the Parish Council elections are basically non-political and as many of the candidates may not be known to everyone in the village, it has been agreed to produce and circulate a composite leaflet, giving brief details of all the candidates.

Two of the members of the present Parish Council (Dr. Tom Brown and Tony Hurd) are not seeking re-election. On behalf of the village we should like to thank them for their work as members of the Parish Council. Dr. Brown has been closely associated with local government for many years, and at one time was a member of the County Council, of Newcastle City Council, and Hexham Rural District Council, as well as the Parish Council. Of the many local schemes with which he has been concerned, establishment of the children's playground on Hedley Road was one in which he made a major contribution. Tony Hurd joined in 1970, at the time when the Dene Estate was having "teething troubles," and helped to resolve some of these, as well as other local issues.

CONFUSED?

The lack of directional signs at the Main Street, Ovingham Road and Church Road junction at Charlie's Corner has frequently caused confusion to motorists who do not know the area, and the Parish Council have recently asked the County Surveyor to provide improved signposting at this junction to help visitors.

Trying to find the new school has also created problems for visitors, and the County Surveyor has been asked to help with providing some small directional signs to the school.

STATION PLATFORM—A rise proposed

Those who have for many years been suffering the hazards of disembarking from the train from Newcastle will be pleased to hear that at last the work of raising the platform to a safe level is likely to go ahead.

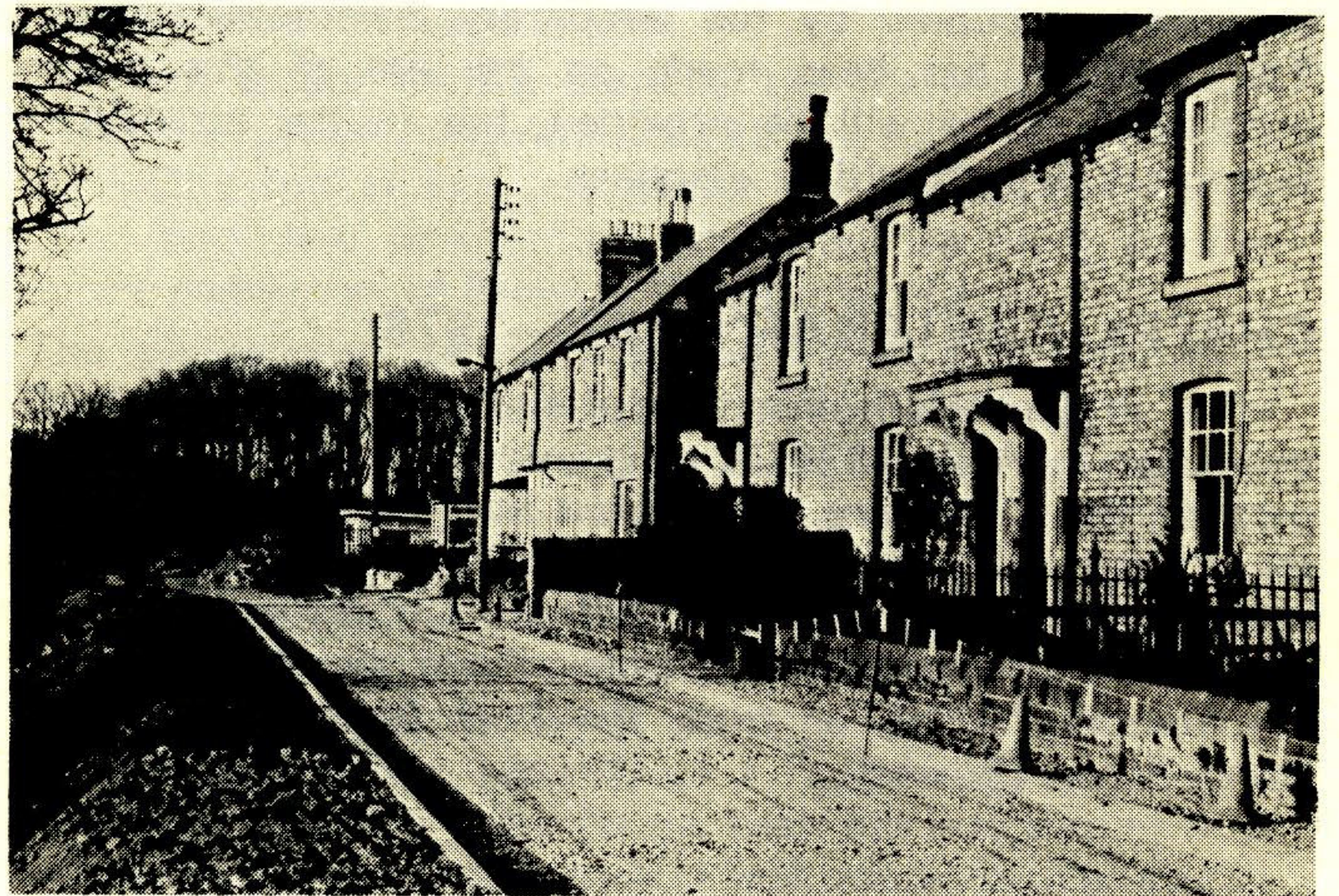
There are some problems about raising the level immediately in front of the waiting shelter, and ensuring that the scheme does not detract from the important historic station buildings. However, it should be possible to devise a satisfactory scheme which ensures the safety of passengers without spoiling the appearance of the buildings.

TYNE VIEW AND WEST VIEW

The long-awaited street works at Tyne View and West View are now completed, resulting in a great improvement for residents in that area.

It is surprising that until the 1950's, Stephenson Terrace, Falcon Terrace, Woodcroft Road, Chapel Lane and Algernon Terrace—as well as Tyne View and West View—were all still unmade roads. With the completion of Tyne View and West View the last of these has now been made up.

Some concern has been expressed at the present untidy condition of the river bankside in front of Tyne View and the County Council have been asked to spread topsoil and grass seed on the slopes which have been formed as part of the recent road works, and to cut the grass in future. We hope that if the bankside can be grassed and restored to a reasonable condition, then residents will take some pride in its appearance and try to ensure that rubbish from gardens, allotments or elsewhere is not tipped down the bank!



Tyne View and West View—Work in progress, March 1976.

UNTIDY ORCHARD SITE

The condition of the small area of rough ground on the corner of The Orchard (and opposite the Church) which was acquired by Banyard, the builders, when they developed the houses in The Orchard, has been the subject of several adverse comments, particularly when compared with the attractive garden being created on the opposite corner by Mr. & Mrs. Milburn.

Although of no commercial value, this plot is in a very prominent position on one of the main roads through the village, and the Parish Council considered it was desirable that it should be improved and landscaped, and suitable arrangements made for it to be regularly maintained in future.

The most satisfactory solution was for the builders to transfer the land to the Parish Council who would be responsible for it in future. This is now being done, and improvements will be undertaken later this year.

OXFAM APPEAL—Helpers wanted

Nearly £70 was raised locally for the Guatemalan Earthquake appeal launched by Oxfam, and the organisers thank everyone who contributed. Oxfam was already working in that country, and its own projects were destroyed in the disaster, so the money sent will be well used.

On Saturday 17th July Oxfam are organising a Summer Fete on the Village Green (Charlie's Corner)—further details will be publicised later.

Incidentally, the local Oxfam group would welcome one or two helpers to join their Committee, and assist with future events. It needn't take a lot of time—just a little enthusiasm and energy. Please contact Mrs. Ritchie (Tel. 2125) or Mrs. Taylor (Tel. 3194) if you're willing to help.

NEW LIBRARY—Opening Hours

The arrangements to open the library in part of the former Primary School on Falcon Terrace have been slightly delayed—but it should be ready by the end of May.

The opening hours proposed are:—

Tuesdays 2 p.m.—5 p.m. and 5.30 p.m.—7.30 p.m.

Thursdays 10 a.m.—1 p.m., 2 p.m.—5 p.m. and 5.30 p.m.—7.30 p.m.

Saturdays 10 a.m.—12 noon.

We hope that as many local people as possible will use this much improved library service. Anyone who hasn't used the mobile service, but who wants to use the new library will need to apply for library tickets. Copies of the application forms will be available either from the library, or the Post Office, or from the Clerk of the Parish Council. On completion they should be returned to the library.

The present access to the old school premises (with steps up from Falcon Terrace) is not convenient for the elderly or for disabled persons or prampushers, so the Parish Council have asked the County Council to provide a level access path from the Dene, to the back of the building across the land previously occupied by the temporary classrooms. When a final decision has been made on the use of this land, a permanent access will be provided, but in the meantime a temporary path should be adequate.

CHAPEL CENTENARY 1876—1976

The present Methodist Chapel building was opened 100 years ago in April 1876. A programme of events arranged as part of the Centenary celebrations has been publicised, and an attractive illustrated commemorative brochure—giving a history of the development of Methodism in Wylam, and other interesting information, is available from the Minister at 17 Stephenson Terrace or from the Post Office, or Blakett House Stores (Bowes).

ROAD IMPROVEMENTS AT THE WATERWORKS—Top Priority requested

At a meeting held recently between representatives of Wylam, Horsley, Ovingham and Ovington Parish Councils to discuss matters of mutual interest, the question of what road improvements were necessary in the four parishes was considered.

It was unanimously agreed that the top priority should be improvements to the stretch of the Wylam-Ovingham road in the vicinity of the Waterworks, where a separate footpath and slight widening of the road immediately north of the waterworks is required.

Whilst it was accepted that a major road improvement here was probably not practicable for several years, a comparatively inexpensive scheme of providing a separate footpath from the Howdene Burn to the west of the Waterworks should be carried out as a matter of urgency.

It was decided to write to the County Council stressing the importance of the improvement as the top priority for this division.

WHAT'S ON IN WYLAM

APRIL

Thursday 29th-1st Drama Society Play—Institute.

MAY

Friday 7th St. Oswin's Social—Church Hall.

Monday 10th Young Wives' A.G.M.—Chapel School-room.

Saturday 15th Wylam Football Club Jumble Sale. 2.30 p.m. Institute.

Monday 24th Friends of Wylam—Half day outing to Allendale.

Wednesday 26th Mothers' Union—Garden Coffee Morning—River House.

JUNE

Monday 7th Friends of Wylam—Day outing to North Berwick.

Saturday 12th Labour Party Garden Fete.

Saturday 19th Conservatives' Garden Fete.

Saturday 26th St. Oswin's Garden Fete.

Monday 28th Friends of Wylam—Half day outing to Bamburgh.

JULY

Tuesday 13th Friends of Wylam—Day out to Harrogate.

Saturday 17th Oxfam Garden Fete.

SUMMER PLAY SCHEME—Your ideas and help requested

The Summer Holiday Play Scheme will be held this year from August 2nd—27th and children will be notified through school about the details, in July. We mention it now, however, for the benefit of grandparents and others who may have children visiting them in the summer who might like to join in the various activities. A further meeting to plan the programme will be held at West House on May 12th at 8 p.m. to which all interested parents are invited. Mrs. McLester (Tel. 3626) is Secretary. We are not certain if there is a real demand for an organised morning of play and stories for children aged from 4½—7 each week during August: would parents get in touch with Mrs. McChesney (Tel. 2399) or Mrs. McCallum (Tel. 2210) if they would like us to continue planning for these younger children? And as usual, offers of help during the Play Scheme will be particularly welcome.

A HOST OF GOLDEN

The results of the bulb planting carried out last autumn have been most successful—with the fine displays of daffodils on many of the small open spaces and grassed areas being much appreciated by young and old.

It is hoped to plant some more bulbs again next September, so anyone with suggestions as to where planting should be done—and offers of help—please contact any Parish Councillor.

Fortunately there has only been one incident of deliberate vandalism reported—when some fool was seen digging up bulbs on the riverside. He got a warning for his trouble!

YOUTH CLUB—New leader appointed

Michael Graham has recently been appointed Assistant Further Education and Youth Tutor for the Prudhoe Area, replacing Keith Walker, and Andy Moore has taken over from John Gorman as Youth Leader.

On behalf of the village, the Parish Council welcomes them both to the area.

As the new leader of Wylam Youth Club, we wish Andy and the members every success in their task of adapting part of the old primary school as their headquarters. There is a lot of hard work to be done in making their rooms suitable, (including decorating and furnishing) with very little money available—so no doubt we shall be hearing from them in connection with their fund raising efforts!

A HORSE RIDER?—Then read this

Drawing attention in the last issue to the byelaws which control dog behaviour prompted several people to enquire, "What about horses?"

It is an offence (under the Highway Act 1835, Section 72) to ride a horse on the footpath adjacent to a public highway. The question of horses using public footpaths is more complicated—but basically all the public rights of way in the village are footpaths where pedestrians but not horseriders are permitted. Several footpaths which are used by horses are becoming badly damaged and discussions will be held with horse-riding interests over the next few months to try to achieve some voluntary control of where horseriders can go. If voluntary agreements fail, some other controls will be required if the "rural" footpaths around the village are to be kept in reasonable condition.

AT YOUR REQUEST

It is nearly three years since the first issue of the "Globe" appeared, and through this newsletter we have tried to keep you informed and give you an opportunity to comment on new proposals and make suggestions for improvements to the village.

We're glad that many people have made suggestions and expressed their views on local matters to us—but unfortunately there are still one or two people who insist on criticising and complaining by means of anonymous letters. The Parish Council cannot take action on issues raised by anonymous letters but are always willing to act on any reasonable suggestions or complaints.

Examples of three small but worthwhile improvements which have been made in the last few months as a result of suggestions from residents are:—

The provision of a toddlers' swing in the childrens' playground.

The construction of a ramp (instead of steps) on the footpath linking Dene Estate with the School to allow more convenient usage by persons with prams and pushchairs.

The addition of the name "Wylam" on the main sign at the west end of the new Horsley-Heddon-Throckley bypass. Several people coming from Hexham were "missing" the turn-off for Wylam.

TIN FOIL FOR THE BLIND—

Change in arrangements

Pat Holt, who has been collecting foil on behalf of the Guide Dogs for the Blind Association over the last year, is leaving Wylam shortly and has asked us to thank everyone who has supplied her with foil. The response to her appeal has apparently been tremendous.

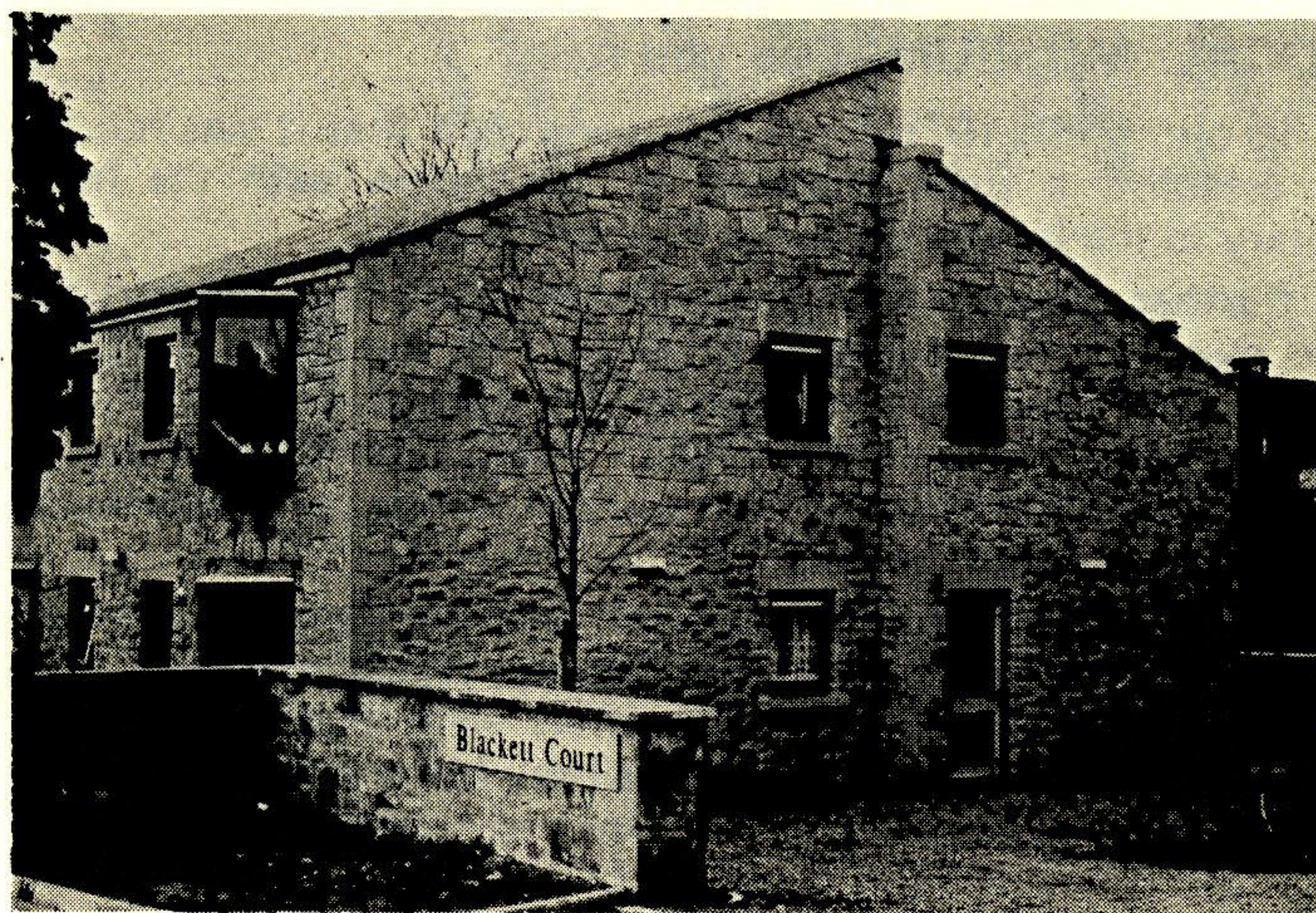
Now, because of Pat's departure, Tricia Hawley of 23 Dene Road, (Tel. 2657) has kindly agreed to take over the collection of the foil. Everyone in the village can help support this worthy cause (at no cost to themselves) so please do so—just collect those old milk bottle tops, etc., and take them to 23 Dene Road. (Many thanks for your help, Pat.)

WASTE GROUND ON JACKSON ROAD/THE DENE—Plans prepared

Plans for the improvement of the waste land between Jackson Road and the Dene have been prepared by the County Planning Department, and these were displayed in the village at the end of March, and later discussed at the Annual Parish Meeting on 31st March.

The scheme seems to have met with general approval, although some small modifications will be made to incorporate several suggestions from local residents.

It is hoped that work can be started later this year.



Blackett Court.

BREWERY HOUSE—For the elderly

We recently asked Mr. R. Duff, Housing Manager of the Anchor Housing Association to write a short article on the Brewery House Scheme:—

"A new Sheltered Housing Scheme was recently completed by Anchor Housing Association on a site behind Brewery House. Anchor are a National Housing Association and one of the leading providers in the country of this type of accommodation.

The site, including the existing building, was donated to Anchor by the Trustees of the Blackett Estate and the scheme has been named "Blackett Court." It will be linked to Brewery House, which is presently undergoing conversion, and when completed will comprise the Warden's Flat, Common Room and Guest Room.

The new section already contains ten one person flats and each flat comprises living room/bed recess, fully fitted kitchen with electric cooker and refrigerator and a bathroom. There are also two, two person flats which will be ready in May when the conversion of Brewery House is complete.

The philosophy behind Sheltered Housing is to provide Warden Supervised Accommodation for the elderly in need and at risk. However, each tenant must be able to do their own shopping, cooking and housework, although support can be provided through Social Services to a limited extent, to assist in these respects. As I have said a Guest Room will be available for relations to stay overnight in the Scheme in the event of illness, or when visiting. The Warden, Mrs. Hartshorn, acts in the capacity of a "good neighbour" and can summon help in an emergency. Each flat is equipped with an intercom and emergency cords in each room, through which the Warden can be summoned when needed. The Warden also calls on each tenant every morning to see if they need assistance. However, maximum emphasis is placed upon letting tenants retain their independence as much as possible.

Priority has been given to residents of Wylam, Ovingham and Horsley, and Anchor have also worked closely with Tynedale District Council in compiling a register of applicants. Tynedale also provided the mortgage finance needed to build the scheme.

When a Scheme is built it is always hoped that a "Friends of the house" policy can be established in the area, that is a number of people who are interested in providing help and entertainment for tenants both inside the Scheme and out, and if you think you can help in this respect I would be glad to hear from you."

If you know of anyone in the villages mentioned or who have other connections with the area, and who would like to apply for accommodation, especially the two-person flats then please contact Mr. Duff for further details. His address is, Anchor Housing Association, MEA House, Ellison Place, Newcastle upon Tyne NE1 8XP.

LOCAL MUSEUM—Can you help?

In our April, 1975, issue, we mentioned that it was hoped to establish a small museum in association with the new library in the former school in Falcon Terrace.

Further progress has recently been made towards starting the museum, with support being given by the Parish, District and County Councils towards this joint project. An application is also being made to the English Tourist Board for a grant, and if this is forthcoming then work in setting up the museum could start later in the year.

As a result of our appeal last year for items of interest about the village and its past history—which might be displayed in the museum. Several offers were made of material associated with the colliery and railway history—for which we are grateful. More exhibits are required, either as gifts or on loan and offers of items will be most welcome.

If you have anything which you think might be of interest, please let Mr. Brooks (Tel. 3520) or Mrs. Fairless know.



WHERE IS IT?

This impressive gateway is within the parish of Wylam—it bears the date 1703, and the house adjacent to it is reputed to have been built in 1828. Can you identify it? (Sorry, no prizes!) Does anyone know where the gateway came from, and when it was built in its present position?

HOLEYN HALL CROSS-ROADS—No lights yet

Following requests from local residents for street lighting at the Holeyn Hall cross-roads, an approach has been made to the County Council (who become responsible for this length of the "old" road now that the new by-pass has become the trunk road).

The County Surveyor has replied that at present there is no money available for this work, but that it will be added to the list of lighting schemes for future consideration.

In the meantime, drive with care at night when approaching this junction.

DOG TRAINING

We're pleased to hear that some positive steps are being taken to help local dog owners to train their pets. Mr. and Mrs. Cass of 5 Bluebell Close, are organising dog-training sessions on Wednesday nights in the Parish Church Hall. For further details, contact Mr. and Mrs. Cass at Wylam 2568.

PLAYING FIELD

Alistair Kemp reports, "The recently planted trees at the west end of the field were a mistake, not on the part of the Association but of the County Council (who were however acting with the best of intentions.) The trees will be repositioned."

We are deciding how best to spend the money on games and play equipment. If anybody feels that they would like to start a new activity on the field or the hard play area, now is the time to tell us, because we may be able to give some help with equipment. Please get in touch with Greg Smith, 76 Dene Road (Tel. 3695) as soon as possible."

The following note from Mrs. Jacobson is mainly for the ladies:

LADIES LEISURE

"As yet there has been no getting together of girls or ladies to form any club to organise use of the field in the future for their leisure activities. If you have any ideas or just a desire to belong to such a club, please let us know."

It is absolutely essential to plan well ahead. If you have any interest at all—be it modest clock golf or more ambitious or remote hopes such as bowls—now is the time to stand up and be counted. In case men feel that they are being unfairly overlooked, we shall be pleased to hear from them along the same lines.

Please contact any of the following:—

Miss E. Rogerson, 2 West View (Tel. 2788.)

Mrs. Claire Hughes, 122 Dene Road (Tel. 2430.)

Mrs. Ellen Jacobson, 14 Algernon Terrace (Tel. 3598.)

MAD HATTER'S TEA PARTY

"Alice in Wonderland" came to Wylam on Saturday afternoon, 27th March, when 60 children in their best "mad" hats, attended a Mad Hatter's Tea Party, arranged by Wylam Children's Book Group, at the Parish Church Hall.

After a mad hat parade the children listened to a summary of the story of "Alice in Wonderland." They then watched a dramatised version of the Mad Tea Party chapter with parents playing the parts of the Mad Hatter (Mrs. Barbara Farr), Alice (Mrs. Claire Hughes), the Dormouse (Mrs. Cicely Iliffe) and the March Hare (Mrs. Pat McChesney), in appropriate costume. This was followed by a reading of poems from "Alice" after which the children danced to records and pretended to be Jabberwocky monsters.

During the party children were able to see photographs, kindly lent by Tyneside Theatre Co., Newcastle, of their Christmas production of "Alice."

A party tea, including jam tarts of course and a mad cake, was then enjoyed, followed by lively party games. Each child was presented with a balloon to take home after a very enjoyable afternoon. We were only sorry to have to disappoint so many other children who could not attend.

(From all reports this was a most successful event, much appreciated by all who attended—congratulations to Alice and her friends in the Book Group. Incidentally, an excellent photograph of the main characters appeared on the front page of the "Hexham Courant" on 2nd April—Editor.)

All correspondence relating to this Newsletter should be addressed to Mrs. D. Fairless, The Clerk of the Parish Council, 31 Falcon Terrace, Wylam.

Printed for Wylam Parish Council by
The Gilpin Press, Houghton-le-Spring