

THE WYLAM GLOBE

Newsletter of Wylam Parish Council

October 1976

Quarterly

Number Fourteen

THE TYNE VALLEY PLAN—FOR BEGINNERS

In June 1976 the Tynedale District Planning Department broke the news that it was going to prepare a District Plan for the Tyne Valley covering a wide variety of important topics including population, housing, employment and industry, transport, community facilities, landscape, conservation and tourism. Interested organisations and individuals were invited to send their preliminary views to the Chief Planning Officer by 31st March, 1977.

District Plans are down to earth documents which cover the detail of everyday life. Though they are not all powerful they can have a very considerable effect on life in the area. The law demands that the public should have a say in the preparation of these plans and it is important that they should do so.

Many people who wish to contribute may be deterred by a lack of understanding of what is expected of them or by uncertainty of what the plan is concerned with. Those who do comment may do so "off the cuff" for lack of opportunity to discuss the issues with others.

In order to help local people the Newcastle University Department of Adult Education, in association with Northumberland Community Council, have arranged a course of 12 meetings—to be held in the Wylam Institute, to explain the nature of local plans and the opportunities for contributing to them, and to encourage discussion of local problems which can be affected by the plans. The aim of the course will be to produce worthwhile submissions to the Planning Officer by next March.

A preliminary meeting was held on 6th October but since there had been little advance publicity for the course, it was agreed to delay the second meeting until Wednesday 3rd November (7.30 p.m. in the Institute), by which time everyone in the village will know about the course (by means of this newsletter.)

So if you're concerned about what Wylam of the future might look like, or just want to know more about the course, come to the Institute on 3rd November.

(Editor's Note: This course should provide an excellent opportunity for those residents who are genuinely interested in the future both of this village and the Tyne Valley in general, to discuss their own views with others, and produce constructive suggestions to the District Planning Authority.)

INFORMATION CARD

Enclosed with this newsletter is a copy of the new edition of the Local Information Card which was so widely appreciated when it first appeared nearly two years ago.

The most obvious difference between the first and second editions is the colour! The new edition is pink (the Pink-Un!) to avoid confusion. Please destroy the old yellow card if you still have it.

To preserve our political neutrality—the third edition when it appears (in 1978?) should be in blue!—one in each of the party colours.

SPEEDING VEHICLES SPELL DANGER

We referred in the last issue to the potential dangers from motorists speeding through the Dene Estate. At its last meeting the Parish Council also discussed the problem of traffic exceeding the speed limit down Holeyn Hall Road—and along Station Road.

Since the completion of the new Heddon-Throckley bypass, vehicles seem to travel much faster into the village—disregarding the 30 m.p.h. limit. In view of this, the police are being asked to consider introducing occasional radar speed-traps to try and persuade motorists to reduce speed.

The Parish Council are also asking the County Council to paint "Slow" signs on the road near the dangerous corner at Wylam Hills Farm, and also on the road at the northern end of the river bridge.

CONGRATULATIONS ON YOUR CENTENARY



One hundred years old this month—the fine railway bridge over the Tyne at Hagg Bank was opened in October, 1876—to complete the Scotswood-Newburn and Wylam Railway. It cost £16,000 to build and is now being given a commemorative coat of paint by the County Council.

JOBS FOR THE BOYS?

The Parish Council have recently agreed to support the Government's "Job Creation" Programme, by offering temporary jobs to youngsters who are unemployed. A small team of youngsters, together with a supervisor, are being recruited to carry out several small environmental improvement projects in the village over the next few months. The full costs of this will be met by Government grant. It should help to provide jobs, and also result in improvements to the appearance of the village.

REPORT OF 1976 SUMMER PLAY SCHEME

From Jean McCallum.

We have come to the end of this year's play scheme with some relief and a great deal of satisfaction. All of the children were returned safely to their parents and we did not have a repeat of an occasion during the first Play Scheme when we declared a dividend, having taken 38 children to Blaydon Baths and returned with 39! This year, our third, the Scheme ran every weekday for four weeks during August; we give them time at the beginning of the holidays to get bored and time at the end to get new shoes and their hair cut. The age range was 4½-12, there were around 750 attendances by about 200 different children, and we again had help from over 40 parents and friends and one grandmother, who is our much valued treasurer as well.

On Mondays the children went to Blaydon Baths, Tuesdays there were craft, drama and chess at the Youth Centre, Wednesdays there were all-day trips, Thursdays there were instrumental sessions at the First School, and Fridays there were craft, board games and cricket at the Youth Centre. The day-trippers took a picnic lunch and visited the Ice Rink and Tynemouth beach (twice), the Washington Wild Fowl Reserve, and Beamish Museum. The day before school started we had a last celebration in Jack Donkey's field, with hot dogs, a real bagpiper in a kilt, donkey rides, a slippery pole and a proper traditional Punch and Judy Show with extra magic as well. The littlest children had special sessions on Wednesdays with a Sports, puppets, and a dragon and dinosaur morning.

We are very grateful indeed to those who make the Play Scheme possible, Wylam Parish Council and Tynedale District Council give us grants to cover insurance, craft materials and operating costs. No helpers are paid in any way and in fact most of them seem to positively enjoy their sessions with the children and we have also had complete co-operation from the Authorities. Northumberland Education Committee allow us to use the First School and Youth Centre and Prudhoe Further Education and Youth Department audit our accounts. Mr. Ford at Wylam First School was most helpful as was Mr. Browell at Ovingham Middle School. The two caretakers involved helped us gladly and the only thing we lacked this year was an area of grass large enough for field games; by next year this will hopefully no longer be a problem.

Finally I am sure that everyone would wish me to thank the parents on the planning group most particularly for the hard work which they put into the organisation of the Play Scheme. Many people in the village have spoken of their appreciation and the children's enjoyment is very evident.

WATCH THE BIRDIE!

One of the active local societies, who regularly make an enjoyable contribution to the Community Week programme is the Wylam Photographic Society.

Secretary, Alan Sleightholme, says they are always very happy to welcome new members and their 1976/77 programme seems to cover a range of interesting topics. Anyone interested in joining the Society should contact him at Bewick Cottage, 1 River View, Ovingham.

CORRECT CONNECTION

As one of our sharp-eyed readers pointed out there was a misprint in our article on "Wylam's American Connection" in July. In the 13th line it stated that the grandmother of Elizabeth Burgoyne was a cousin of General John Burgoyne; it should have said her **grandfather** was a cousin of the General.

STATION PLATFORM

Aware of the strong local feeling that early action is required to satisfactorily resolve the problems associated with raising the station platform, the Parish Council has taken the initiative in arranging a meeting with British Rail, the Planning Authority and other interested parties. We should be able to report on the outcome in the next issue of this newsletter.

THE GREAT WALL OF WYLAM

Although Wylam cannot boast part of the Roman Wall within the Parish boundaries the village has recently acquired—a wall, which could prove a rival attraction.

This new wall has been built in a corner of the playing field, and with an adjoining hard surface play area—is part of the improved facilities being provided by the Community Playing Field Association. A "special" wall against which youngsters can kick or knock a ball—without annoying local residents—is a very useful asset which is sure to be well used.

GOT YOUR CHRISTMAS CARDS?

To commemorate the Chapel Centenary, Wylam Methodist Church have produced a special Christmas Card this year. On the front of the cards is an attractive drawing of the chapel by Mrs. Valentine, with a simple message of greeting inside. The cards are attractively produced and ideal for anyone (not just Methodists) to use.

Price 45p for 10 cards and envelopes, they can be obtained from Rev. Glynn Lister at 17 Stephenson Terrace, or from the chapel stewards.

HIGH-LEVEL RANTERS AT CLOSE HOUSE

If you like listening to the High Level Ranters, support the SHELTER organisation—or just enjoy a dance in pleasant surroundings why not go to the Shelter Group Christmas Dance at Close House on Friday 10th December?

Tickets from Tricia Hawley, 23 Dene Road (Tel. 2657.)

LIBRARY BEING WELL-USED

After a quiet start, the new library is now being well-used. The County Librarian has sent us the following report:—

The library opened with minimum adaptations in part of the former County Primary School in Falcon Terrace at the beginning of August and replaces the weekly visit of the mobile library. Within a very limited budget two classrooms have been adapted to accommodate a children's library, reference and local history collections and an adult library. The initial stock of 7,000 books has been increased to 9,000 books since the opening date. Up to the middle of September 6,757 books had been issued, 2,016 of which were children's books; 562 adults and 298 children have joined the library so far.

Every effort has been made to provide a collection of either new or rebound books to start the library with a clean, bright and comprehensive bookstock. Today books are costly items and readers can help ensure the books in the local library have a long and useful life by protecting them from the elements and other sources of damage when in their care. Pets seem particularly partial to chewing the printed word and it is surprising how much damage they do to books in readers' homes. (It's cheaper to buy your dog pet food than to feed him with library books!)

Severe limitations on expenditure prevented the covering of the floors with carpeting. Consequently the wooden floors are noisy when the library is in full use. This is particularly noticeable in the children's section and it is appreciated that parents are trying to restrict the enthusiasm of the children as much as possible so that adult readers in the library have a reasonable amount of quiet.

Although accommodation is limited it is hoped to feature various kinds of displays on a wide variety of topics within the library. Initially watercolours by Mrs. M. Britten of Wylam have been shown and a display featuring Dr. John Ismay Atkinson who was the country doctor in this part of the Tyne Valley, and lived for many years at West House, Ovingham Road, Wylam, until his death in 1883.

By the time this newsletter appears it is hoped that the new path across the land west of the building will have been laid, to provide a more convenient access to the library from the Dene.

QUEEN'S SILVER JUBILEE 1977

Most people will know that next year is the 25th year of the Queen's reign—she having succeeded her father in 1952.

All local authorities and many organisations will be making arrangements to mark this occasion.

We hope that it will be possible to organise some special event—in which the whole village can join as a celebration.

Anyone who has any ideas as to what they would like to be done locally to commemorate the Silver Jubilee next year is invited to send their suggestions to Mrs. Fairless, the Clerk of the Parish Council, at 31 Falcon Terrace.

PLANNING APPLICATIONS

Since the reorganisation of local government in 1974 all Parish Councils have been entitled to see and comment on all planning applications submitted affecting their parish.

In Wylam, whenever a controversial application is submitted the Parish Council ask the Tynedale District Council Planning Officer to notify adjoining neighbours so that they are aware of proposals.

However one of the best ways to check on what planning applications have been submitted is to buy the "Hexham Courant" regularly. The "Courant" lists all applications sent in to the District Planning Officer each week and in this way the newspaper provides a very useful service.



OLD WYLAM

This photograph shows Bradley Mill—a water cornmill—in about 1905. Nothing now remains of the mill which stood in fields behind Wylam Station.

Can anyone tell us when it last ground corn—and has anyone any other photos of the mill or its millers?

ELM DISEASE SPREADING

The fears expressed in our last issue—that Dutch Elm Disease was spreading in the village, and in this part of the Tyne Valley, have sadly been confirmed.

Mr. J. Johnson, who has been appointed by the County Council specially to deal with the problems of Dutch Elm Disease, has recently visited the village and inspected about a dozen areas where residents had thought trees were infected.

Suspected outbreaks are in elm trees on Ovingham Road, Holeyn Hall Road, Bluebell Lane, Wylam Wood Road, Station Road, on the river banks, on Jackson Road and elsewhere. If the disease is confirmed there is little alternative but to have the trees felled.

Fortunately there is a wide variety of different species of trees in the village but the loss of all the elms will make a considerable difference to certain areas.

If the disease is as widespread as is feared, resulting in the disappearance of elms, then it is intended (with the help of the County Council, and possible grant aid from the Countryside Commission), to try and arrange for replanting of the areas affected.

HAPPIEST DAYS OF YOUR LIFE?

Unless you are a parent with children at the school it is unlikely that you know much about the local school. Since it occupies an important part in village life, we asked Mr. Eric Ford, the headmaster, to supply brief details on the school—mainly for the benefit of those residents without any links with the village school.

"The school re-opened last month at the start of the Autumn Term with an unchanged staff and 161 children. A further 25 children are expected at the beginning of next term raising the average size of class to over 30 and with it, the obvious problems. There was some slight internal reorganisation this term, to ensure that each class had no more than two year-groups in it. There are two classes of first and a few second year children, two of second and third year, and two of fourth and fifth year. This structure may have to be changed from year to year according to the size of intake. One other change in school is that reading will now be taught by the Traditional Orthography method, with initial teaching alphabet being phased out over the next two years.

All fourth and fifth year children attend Prudhoe Swimming Pool once a week, and we hope that by the time a child leaves First School he/she is able to swim.

A number of activities take place immediately after school—largely for the older children, e.g. Recorders, stamp club, choir and drama.

Regular visits are made to places outside the school, to both the theatre and places of interest. Last year children visited the Sunderland Empire Theatre, Newcastle Theatre Royal, Newcastle Airport, Bamburgh, Bolam Lake and Lowther Wildlife Park.

Film shows are held once a month during the Autumn and Spring terms and the programme for the remainder of this term is:

7th October—"Tom Thumb."

4th November—"Ichabod and Mr. Toad." Walt Disney.

2nd December—"The Golden Voyage of Sinbad."

Each show starts at 6.30 p.m. and admission is 20p. Everyone is welcome—no age limit!

The school has a young but increasingly active Parent-Teacher Association (P.T.A.) and immediate events are a Dance in school on Friday 15th October and the A.G.M. on 25th October. The P.T.A. plays an important part in school life, and has recently undertaken the paving of the inner courtyard, thus creating a valuable extra work/play area.

The P.T.A. is always very pleased to welcome both parents and non-parents at most of its activities.

As far as the school building and grounds are concerned—the playing field is now ready for use by the children and pitches marked out.

Part of the access road into the school has been resurfaced during the summer holidays, but problems have occurred again with the gas supply pressure."

(Editor's note: The School Managers at their meeting in September expressed serious concern about the problems of gas supply, and have made strong representations to the County Education Authority to ensure that urgent action be taken to solve this problem.)

SHORT BACK AND SIDES PLEASE

One side-effect of the drought this summer has been that grass hardly grew at all during July and August. Among people grateful for this are your District and Parish Councillors and Officials of the District and County Councils, who, in a summer of "normal" English weather frequently get complaints about the local authority grass cutting service!

As part of its continuing efforts to get improved arrangements for grasscutting of open spaces and verges in the village, the Parish Council has recently produced a comprehensive report which is being sent to both the District and County Councils, with suggestions and recommendations as to how the service could be improved next year at little or no extra cost.

WHAT'S ON IN WYLAM

OCTOBER

- Friday 22nd Dance 7.30 p.m., Institute.
Tuesday 26th Playing Fields Association A.G.M., 8.00 p.m.
Institute.
Tuesday 26th "Tracing your family history." Illustrated
Talk. 8.00 p.m., Institute.
Saturday 30th Nursery School Coffee Morning. Institute.

NOVEMBER

- 6-13 COMMUNITY WEEK.
Saturday 20th Oxfam Sale. A.M., Institute.
25-27 Drama Society Play, Institute.

DECEMBER

- Friday 3rd P.F.A. Dance, Institute.
Saturday 4th Conservatives' Children's Party 2.00 p.m.,
Institute.
Wednesday 8th Friends of Wylam Party.
Friday 10th Shelter Dance at Close House.
Friday 17th Cricket Club Dance
Wednesday 22nd Carol Service, Old Schools, Woodcroft Road,
7.30 p.m.

VILLAGE DIARY—Reminder for Society Secretaries

The Village Diary, which aims to be a comprehensive diary of future meetings of Societies, and village events is kept by Mrs. Hurd of 138 Dene Road.

The diary is available for anyone to consult, and secretaries of societies, and anyone arranging local activities is asked to let Mrs. Hurd (Tel. 2563 after 5 p.m.) have details of meetings and events already arranged this winter, and in future to consult the diary BEFORE fixing public events. This should avoid problems of several local events clashing on the same day—as has happened occasionally in the past.

Any organisation wanting specific events publicised in the January issue of the Globe should notify us before Christmas.

ARE YOU A MEMBER? IF NOT—WHY NOT?

Most of you will have read this appeal for members which is regularly printed by the Institute Community Association on their annual programme of events for Community Week held in October/November each year.

Ron Calvert, the secretary, reports that this year the Association is launching a special appeal for members. Rising costs make it essential that the Institute has all the support the village can give.

The Institute Management Committee are anxious to maintain the present high standard of the Institute for the benefit and use of the village. In view of the rapidly increasing costs of decorating and general maintenance it is most important that as many residents as possible join the Institute Community Association and help to maintain the village community centre.

WE NEED YOUR SUPPORT—PLEASE BECOME A MEMBER

Annual Subscription 50p per person.
Family Membership £1.00.

Subscriptions will be gratefully received by any of the following committee members, who will issue receipts:—

President—T. N. Pattinson
Vice-Presidents—W. Fairless and Mrs. J. McCallum
Chairman and Treasurer—Dr. A. Swindale
Secretary—R. Calvert

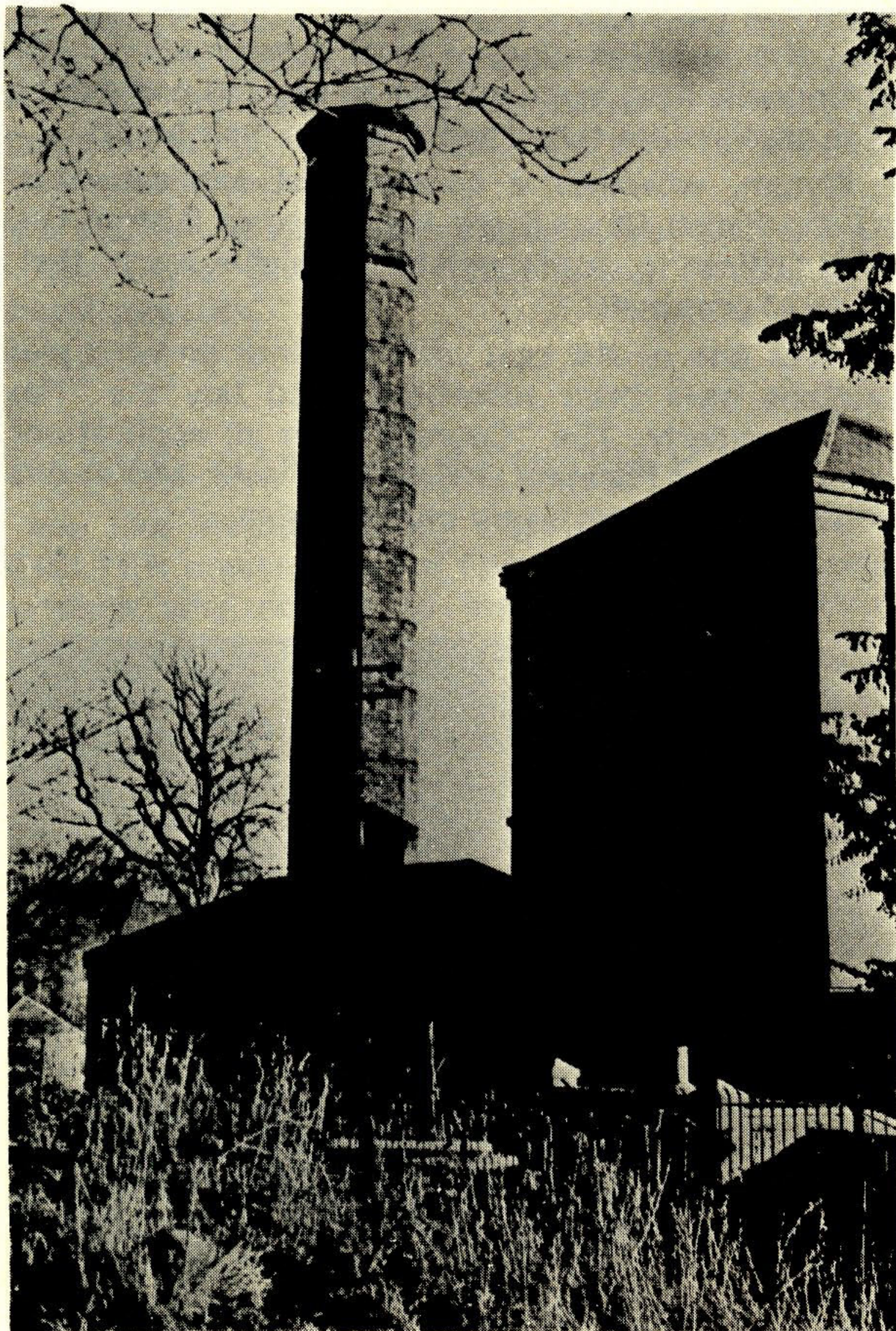
Committee Members:—

Mrs. M. Calvert	Miss Rogerson
Mrs. E. Beattie	D. Beattie
Mrs. H. Broomfield	J. Bond
Mrs. M. Gilroy	N. Gibson
Mrs. B. Hibbert	A. Mason
Mrs. M. Howarth	A. Sleightholme
Mrs. A. Priestley	
Caretaker—Mrs. M. Harrison	

AN IDEAL CHRISTMAS PRESENT

It's not too early to be thinking of Christmas—and anyone who wants a small present for someone living away from Wylam couldn't do better than send them a copy of the 40-page book on "Wylam and its Railway Pioneers" which the Parish Council published last year.

A limited number of copies are still available at the low price of 45 pence each. Obtainable from Mrs. Fairless, 31 Falcon Terrace, or from Mr. Gillies (Post Office) or Mr. Armstrong (Dene Terrace West.)



Wylam Waterworks

An elegant example of Victorian industrial architecture and a prominent local landmark. This photograph shows the oldest parts of the building—started in 1874.

"NOT AMUSED" IN PARSON ROAD

Some of the residents on Parson Road are indignant that certain individuals (not yet identified) insist on dumping garden and other rubbish down the embankment on the edge of the children's playground at the back of their houses.

There is no possible excuse for the selfish people who dump rubbish in this playground (or elsewhere in the village.)

Anyone who reads these newsletters (and most people seem to) must know by now that the District Council refuse collection teams (dustmen!) will take any rubbish (including garden rubbish) which is put out for collection—provided that it can be put in the refuse wagon. If anyone finds the dustmen unwilling to take rubbish away—please contact one of your two Tynedale District Councillors, or a Parish Councillor (their names, addresses and 'phone numbers are on the pink card) who will take the matter up with the District Council.

All correspondence relating to this Newsletter should be addressed to Mrs. D. Fairless, The Clerk of the Parish Council, 31 Falcon Terrace, Wylam.

Printed for Wylam Parish Council by
The Gilpin Press, Houghton-le-Spring