

THE WYLAM GLOBE

Newsletter of Wylam Parish Council

April, 1977

Quarterly

Number Sixteen

5th MAY IS VOTING DAY

Thursday, 5th May is polling day for the County Council elections, and also for the by-election to fill the vacancy on the Parish Council. Arrangements have been made to hold both elections on the same day—for the convenience of voters and the economy of rate-payers!

The two candidates in the County Council election are both well-known personalities already involved in public life and organisations locally.

Christopher d'Ambrumenil is the present County Councillor for the Bywell Division (which includes Wylam) and is chairman of the County Council's General Purposes Committee.

Jean McCallum is chairman of the Northumberland Community Health Council, and contested the Tynedale District Council election last year.

We're not intending to give you any advice on who to vote for—but would just ask you to be sure that you make the effort to go to the polling station on 5th May.

Last year in the District and Parish elections over 70% of the people eligible to vote in Wylam did so. Let's try and increase that number this year.

PARISH COUNCIL BY-ELECTION CANDIDATES

In the Parish Council elections last May we distributed brief details of all the candidates to help you. That information was welcomed by many people and although this is a by-election for just one vacancy, we invited the candidates to give us details of themselves, in about 50 words. What they supplied is given below.

ALAN W. JONES, aged 35, 19 Tynedale Close, married with four children at local schools. Member of the Parochial Church Council, Playing Fields Association, Labour Party, Allotments Association and local Shelter Group. Chartered Civil Engineer with consulting firm in Newcastle. Interested in maintaining and improving the environment and facilities in the village, particularly on a self-help basis.

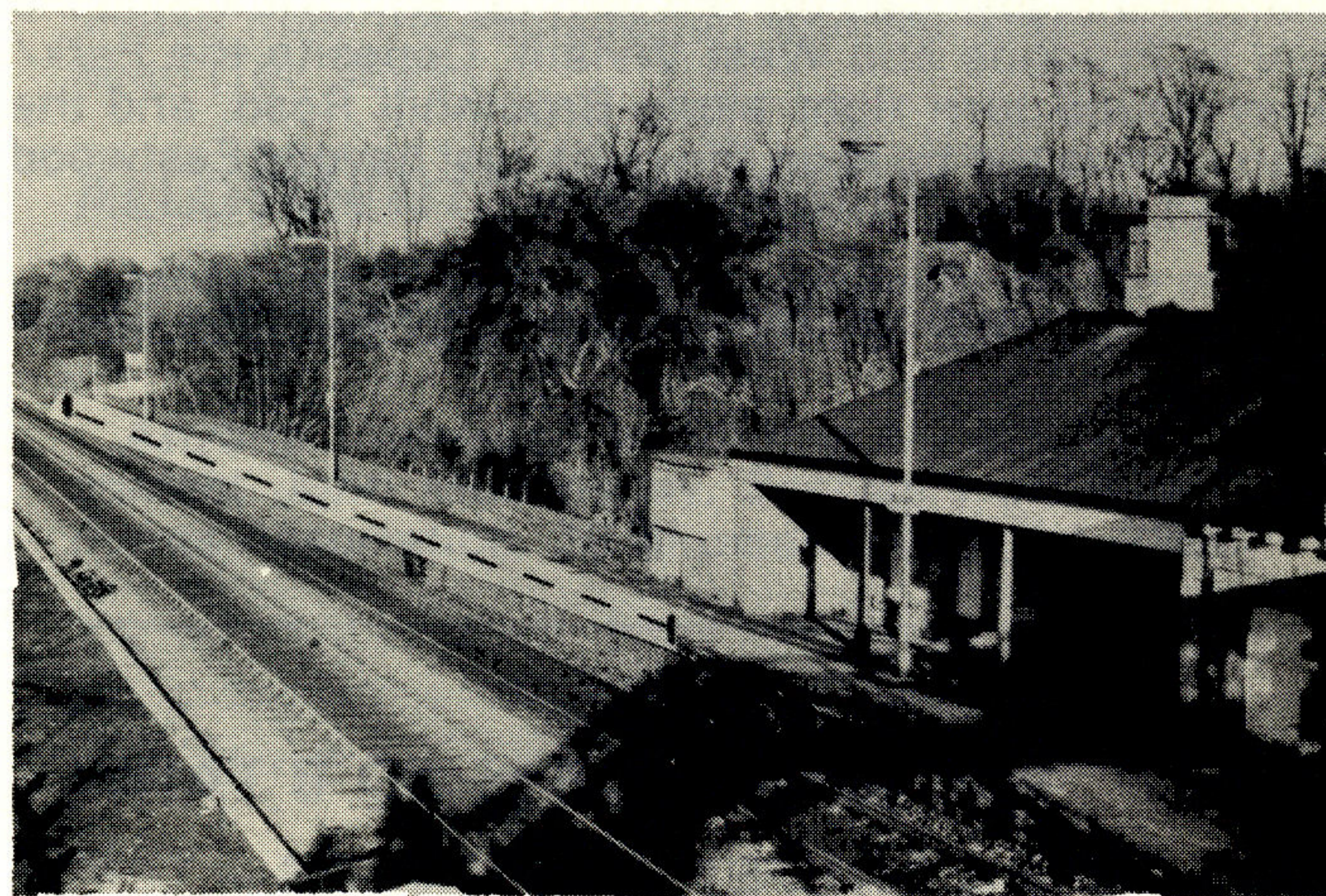
LYNNE PETRIE, 24 Dene Road. Lynne and her husband David came to Wylam in 1969. Their children are Richard (at Wylam School), and Andrew (at Nursery and Playgroup). She is a founder member of Wylam Shelter Group, the Book Group and the Housewives Discussion Group and has been on the Playing Fields Association and Playgroup Committees.

STATION PLATFORM

Modified Scheme now agreed

We're pleased to report a famous victory for good sense. After many months of uncertainty, following the rejection of their original scheme to raise the station platform, the British Rail Board have now agreed to a modified scheme, similar to that recommended by the Parish Council, and Tynedale District Planning Committee.

Work on the scheme has started recently and will involve raising the level of the down platform east of the waiting shelter and will no longer affect the platform in front of the architecturally and historically important station buildings, which was the cause of the opposition to the original proposal.



Work is now in progress on the scheme to raise the station platform along the length marked — — — — —

The modified scheme now agreed will achieve the objective of improving the platform for the safety and convenience of all passengers—without permanently spoiling the setting of the buildings.

The Parish Council is grateful to the Chief Planning Officer, and the majority of the Tynedale District Planning Committee members who stood firm in opposing the unsatisfactory initial proposal, and helped to persuade British Rail to produce an acceptable alternative. We also thank those officials of British Rail who accepted the alternative scheme put forward.

JUBILEE SERVICE OF THANKSGIVING

To mark the Silver Jubilee of the Queen's accession a commemorative service will be held in St. Oswin's Church at 3.15 p.m. on Sunday 5th June. This will be a United Service to which everyone in the village is invited.

DON'T DUMP RUBBISH

A recent inspection of the village shows that we need to remind everyone that it is an offence (punishable by a heavy fine) to dump litter or rubbish of any sort.

Rubbish has recently been dumped off Bluebell Lane, both near Rift Dene and also beyond Oakwood Cottages, and on the Ovingham Road; residents who live in the houses on the south side of Woodcroft Road—backing onto the old railway track are reminded that garden rubbish must NOT be thrown down the bank alongside the old track. Similarly tenants of the riverside allotments are not permitted to dump rubbish around the edge of the old pit heap area or the riverbank, which are places for public walks and enjoyment. All allotment rubbish must be disposed of within the actual area of allotments.

The rough ground in Engine Dene is not intended as a tip for the benefit of residents in Algernon Terrace, Woodvale Gardens, the Dene or part of the Dene Estate—nor is the land next to the Tennis Courts on Wylam Wood Road a dump for South Wylam.

We hope that everyone will take a pride in the village—and not spoil it by inconsiderate dumping of rubbish. Remember that the dustbin men will take most items of rubbish (including most garden rubbish if it is in boxes or sacks) as part of the weekly collection service; if you have anything very large to dispose of contact the District Council Environmental Health Department (Tel. 0434 4011) and they will arrange to collect.

Alternatively you can always take any rubbish direct to the Council tip at West Wylam yourself. (The West Wylam tip is only two miles from the village. To get there take the Wylam Wood Road from South Wylam to Hagg Bank, and take the left turning, which leads up the hill to Prudhoe and West Wylam. Opposite the Park/Playground turn right along Broomhill Road, and the entrance to the tip is on the right, just beyond Eastwood School.)

You've no excuses for dumping rubbish in the village now.

BURGLARS PREFER DARKNESS—WHY HELP THEM?

There are many ways in which you can unwittingly encourage or help thieves—one is by not bothering to report faulty street lamps.

In the power shortage two or three years ago, when street lamps in some areas were deliberately switched off there was a noticeable rise in accidents, and increase in crime.

If the street lamp near your house is faulty—report it immediately by telephone or letter to the County Council Lighting Officer at Akenside House, The Side, Newcastle (Tel. 9610064) or to the Clerk of the Parish Council Mrs. Roan at 88 Dene Road (Tel. 3669) giving an accurate description of the position of the faulty lamp. (Incidentally we have again urged the County Council to arrange for street lamps in the village to be numbered for identification as soon as possible.)

Don't be lazy and hope that your neighbour reports that faulty lamp—remember it may be **your** house which is burgled or your child injured in an accident.

WYLAM WATERWORKS PUMPING STATION

At our request Mr. R. W. Rennison of the Newcastle and Gateshead Water Company has written the following short article about the Wylam Pumping Station.

'On Wednesday, 22nd December, 1976, the new pumping station built by the Newcastle and Gateshead Water Company at Ovingham was brought into operation, pumping water from the Tyne to the filters at Whittle Dene, so replacing the old pumping station Wylam. Initially completed in January, 1876, the Cornish beam engine (pictured in the October issue) was augmented in 1885 by the addition of the two Barclay engines and again by reciprocating pumps in 1894. These pumps were eventually replaced by electrically operated units in 1918, in turn superceded in 1950 by those recently made redundant.

'When the station was first developed at Wylam, the consumption of the Newcastle and Gateshead Water Company was 8 million gallons per day; by 1970 when further major works were considered, it had risen to 45 million gallons per day and in order to relieve the existing mains, filtration plant and service reservoirs, the River Tyne Abstraction Scheme was designed, whereby water is pumped from the Tyne at Ovingham to new Treatment Works at Horsley. Following treatment it is again pumped, via a 49 inch diameter steel pipe, to a new service reservoir at Birney Hill, between Throckley and Darras Hall, before discharging into the Company's existing mains at Gosforth Park.

'The type of treatment used is a development of that initiated some 20 years ago at Whittle Dene and Throckley, and developed at Warkworth, while the decision to feed into the system at its north end, rather than follow the river valley, was made as a result of the increasing demand for water in south-east Northumberland, and, in fact, the 55 inch diameter main carrying the water from Ovingham to Horsley is the largest laid by the Company.

'So far as the river is concerned, the new intake has been designed to blend with the river bank and other than its walls and handrails will not project above the existing roadway; it is hoped that the amenities, after suitable landscaping, will be not at all affected while any change in level will be undetectable, especially when it is borne in mind that the river flow will be augmented by water from the Kielder reservoir now under construction. It has been decided that the old pumping station at Wylam, now beginning its second century, will remain and the chimney, long a landmark, will stand as a monument to the directors who in 1872 had the forethought to establish the works at Wylam.'

SCHOOL STAFF CHANGES

We congratulate Miss Kingston, the deputy headteacher at the Wylam First School on her appointment as the headteacher at Broomhaugh and Riding School, in September. Miss Kingston has been here for over nine years and we should like to thank her for her important contribution to the school during that time.

Her successor, as deputy headteacher is to be Mrs. Daws who lives in Morpeth and is at present teaching at a first school in Cramlington.

We wish both Miss Kingston and Mrs. Daws every success in their new jobs.

PARISH COUNCIL RATE REMAINS UNCHANGED

The 2p rate levied by the Parish Council in 1976/77 for 'Parish purposes' will remain unchanged for 1977/78, and will be included within the General Rate Demand which householders will shortly be receiving from the District Council.

Among the new projects which it is hoped to carry out in the forthcoming year, and which will involve the Parish Council in some expenditure are:

- (a) Contribution towards the cost of maintaining the Playing Field.
- (b) Local Silver Jubilee Celebrations.
- (c) Fencing to protect new trees to be planted on the Jackson Road/The Dene site when reclamation has been completed.
- (d) Improvements to the Riverside allotments and adjoining land.
- (e) Acquisition for future improvement of several untidy areas of waste ground in the Village.
- (f) Tree planting on the riverside.
- (g) Completion of landscaping and grass-seeding of land at the entrance to the Orchard opposite the church.
- (h) Assistance to the Youth Club.
- (i) Improved grass-cutting of verges and open spaces.



The scheme to landscape this area at the corner of The Orchard, will be completed shortly.

DO YOUR TREES OVERHANG A FOOTPATH?

Do the trees, bushes or hedge in your garden overhang a pavement or other public footpath?

If so they could be causing an obstruction and might cause an injury (as well as inconvenience) to other people—particularly elderly residents or young children using the footpath.

In an incident recently one old lady with poor sight walked into the branch of a small tree projecting across a pavement in the village, and was lucky not to have been quite seriously injured.

Remember—this might happen to one of your family—so now that spring is here, take a pair of pruners and a saw, and cut back the branches of any bushes or trees in your garden, which may overhang the footpath.

You may save yourself a lot of trouble and money if anyone made a claim for damages as a result of an injury!

CAN YOU HELP?

The youngsters at the Youth Club are making determined efforts to redecorate and improve the two rooms which they use in the Falcon Centre.

They are doing much of the painting and repairs themselves, and are raising money towards equipping the former kitchen area as a lounge and coffee bar.

However, floor coverings, easy chairs, coffee tables, cutlery, crockery, etc., are expensive and if anyone in the village has any of these items which they no longer want—and would be willing to give to help equip the Youth Club, the youngsters would be very grateful.

Offers of help please either to Mr. A. Moore the Youth Club Leader (Tel. 998 32998) or to Mrs. Roan, 88 Dene Road, Wylam (Tel. 3669).

FRIENDS OF WYLAM OUTINGS

Friends of Wylam have supplied the following details of their summer outings.

June 2nd—To Keswick, leave Wylam 9.30 a.m.

July 7th—To Tynemouth, leave Wylam 1.30 p.m.

August 24th—To Alston and Stanhope, leave Wylam 1.00 p.m.

September 14th—To Barnard Castle and Bowes Museum, leave Wylam 10.00 a.m.

MOTORCYCLING PROHIBITED

Motorcycling along the old railway track walkway is prohibited—if you see anyone riding motorcycles on it please note the registration number and contact Mrs. Roan (Tel. 3669).

ALLOTMENTS AVAILABLE

More allotments are now available on the riverside following the acquisition of land by the Parish Council.

Anyone interested in renting an allotment should contact John McChesney, Secretary of Wylam Allotments Association, 26 Bluebell Close (Tel. 2399).

WHAT'S ON in May, June, July

MAY

- | | |
|---------------|---|
| Thursday 5th | Polling day in local elections. |
| Monday 9th | P.T.A. cookery demonstration, M.M.B. at school, 8.00 p.m. |
| Saturday 14th | Tennis Club Jumble Sale, Institute. |
| Saturday 28th | Village Jubilee Celebrations. |

JUNE

- | | |
|---------------|---|
| Sunday 5th | Jubilee Service, St. Oswin's, 3.15 p.m. |
| Saturday 18th | Summer Fair, Methodist Church. |
| Friday 24th | Tennis Club Summer Dance. |
| Saturday 25th | St. Oswin's Garden Fete. |

JULY

- | | |
|--------------|--|
| Saturday 2nd | R.V.I. Garden Fete, Castle Hill. |
| Sunday 3rd | Tennis Club Open Day. |
| Sunday 3rd | Family Service, Old Schools, Woodcroft Road, 6.30 p.m. |
| Saturday 9th | Conservatives Fete, Southlands, Wylam Wood Road. |

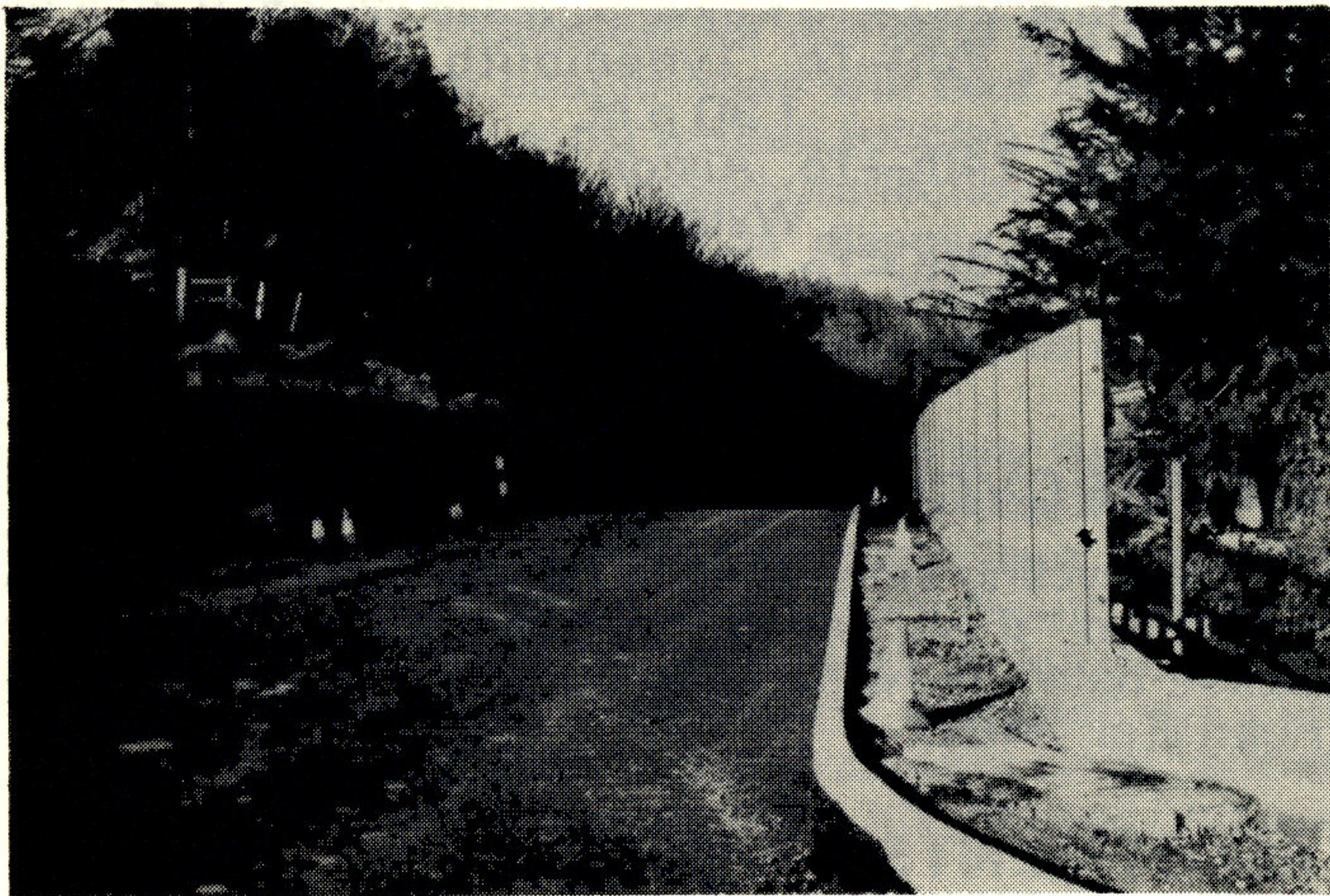
ROAD IMPROVEMENTS

As promised earlier this year, the County Council Highways Department has now carried out improvements on the Wylam-Ovingham road in the vicinity of the Waterworks.

This will be a very welcome improvement on the most dangerous length of this road.

We think that this is a good example of what can be achieved when one has the active support of our local County Councillor and the unanimous agreement and pressure from all the Parish Councils in the area, and from the District Council.

The Parish Councils are asking the County Council to complete the improvements by constructing a footpath alongside the very narrow stretch of road between the Howdene burn bridge—and the old waterworks, as soon as possible. When this has been done there will be a footpath or wide verge for pedestrians along the complete length of the road between Wylam and Ovingham.



Taken earlier this month, this photo shows work almost completed on reducing the "hump" outside the waterworks, and the new pavement.

JUBILEE MUGS

All children at Wylam First School will receive a free Jubilee mug to commemorate the Jubilee and these will be paid for out of the special school fund (money raised by the school for 'extras' not provided by the Education Authority).

A limited number of extra Jubilee mugs (similar to those being given to the First School pupils) have been purchased by the Parish Council and will shortly be for sale at approximately 55p each.

Contact Mrs. Roan for further details. They will be sold on a first come first served basis, and are primarily intended for those local children who will not be getting one from the school.

YOUR CHANCE TO SPEAK

This year's Annual Parish Meeting will be held in the Institute at 7.30 p.m. on **Monday, 23rd May.**

This is of course a public meeting to which all Wylam residents are invited. It is your best opportunity to question your Parish Councillors and to make your opinion known on anything that is happening in the Village—or that you think ought to happen!

Come and air your views—the more the merrier!

Book the date—Monday, 23rd May.

FROM STRENGTH TO STRENGTH

Wylam Dramatic Society has recently won three out of four drama trophies at the Ryton Festival.

On the Friday evening the Society won first prize for a one act play 'In Need of Support' with an all female cast. This play was produced by Kathleen Moore and also won the 'Best Set' award. On the Saturday evening the Society also won first prize for a one act play 'Mother's Day' produced by David Taylor.

Following their Community Week presentation of 'Mrs. Griggs loses her Bed' the Society has recorded this play for Radio Tyneside Hospital Broadcasting, for transmission at Easter. Further recordings are in the pipeline.

The Society members latest production has been 'Lord Arthur Saville's Crime', a comedy by Constance Cox, adapted from a play by Oscar Wilde; produced by Sheila Storey and performed on the evenings of April 28th, 29th and 30th in Wylam Institute.

Anyone wishing to become a patron for 1977 please contact Mrs. Calvert, 12 Woodvale Gardens. Tel. 3325 for details.

Wylam Dramatic Society extends a warm welcome to new members.

JUBILEE GIFTS OF TREES

On behalf of the village (to mark the Royal Silver Jubilee), the Parish Council has been pleased to accept generous gifts of trees from the Friends of Wylam, and from Mrs. Mills of 5 Hedley Road and her daughter Mrs. Joan Lempriere and family who live in Jersey (who have already given many of the daffodil bulbs which have been planted on local open spaces).

Anyone—either individuals, families or local societies/organisations who would like to make gifts of trees/bulbs, or donations towards the costs of landscaping the open space opposite the church (at the entrance to the Orchard)—or improving some other part of the village—is invited to contact the Chairman of the Parish Council (Jim Robinson, 'Haverbrack', Elm Bank Road), or the Clerk (Mrs. M. Roan, 88 Dene Road).

THE QUEEN'S SILVER JUBILEE APPEAL

This appeal inspired and led by the Prince of Wales, has been launched to enable the whole nation to commemorate the 25 years of the Queen's reign.

The first claims on the Fund to be set up will be to enable young people to work together in helping others of all ages, and to assist with grants for specific youth projects. The money will be available for projects in the United Kingdom and Commonwealth countries. A collection will be made during the week May 9-14th.

Within Northumberland the appeal is being organised on a District Council basis and in our own district of Tynedale a Silver Jubilee Appeal Committee has been set up to help raise money. One of the ways in which this is being done is to have a Grand Draw—for which the 1st Prize will be £200, 2nd Prize £100 and 3rd Prize £50. 90% of the net proceeds will go to the Silver Jubilee Appeal and 5% each to the Tynedale Sports Council and the Tynedale Arts Council.

Tickets for the draw (10p each) will be on sale in the village in the next few weeks—please support this appeal.

All correspondence relating to this Newsletter should be addressed to Mrs. M. Roan, The Clerk of the Parish Council, 88 Dene Road, Wylam.

Printed for Wylam Parish Council by
The Gilpin Press, Houghton-le-Spring.

WYLAM JUBILEE DAY EVENTS



At a meeting arranged by the Parish Council on the 10th February, attended by representatives of many organisations in the village, it was agreed that a committee should be formed to arrange events at Wylam's Field Day as part of the celebrations of the Queen's Silver Jubilee.

The committee has four representatives from the Wylam Community Playing Fields Association:

Douglas Hamilton, 'Hillside', Wylam Wood Road.	(Tel. 3300)
Tony Mitcham, 'Meadowfield', Wylam Wood Road.	(Tel. 2128)
David Tuck, 28 Dene Road.	(Tel. 3507)
Alan Jones, 19 Tynedale Close.	(Tel. 2556)

who will be organising events on the Playing Field during the day, and four members of Wylam Round Table:

John Mathews, 6 Wellburn Close, Ovingham.	(Tel. Prudhoe 32705)
Martin Hegarty, 30 Tynedale Close.	(Tel. 3525)
George Harper, 18 Woodvale Gardens	(Tel. 3363)
Ian Davidson, 29 Tynedale Close.	(Tel. 2508)

who will be arranging the Grand Opening Parade and the Barbecue and Dance in the evening.

The event is to be known as the **WYLAM JUBILEE DAY** and will be held on **Saturday, 28th May, 1977**. In the days preceding the event a Jubilee Queen is to be appointed, and the village is to be decorated with flags, banners and bunting.

Although the programme of events has not been finalised it is hoped that the celebrations will begin in the morning, with a Town Crier publicising the festivities, and at 1.30 p.m. a Grand Opening Parade will take place. This will be a Fancy Dress parade with the theme of 'King's and Queen's of England through the Ages'. Organisations in the village are being asked to provide participants in suitable costumes, and the parade will start in the vicinity of Wylam Institute and proceed to the Playing Field, led by a band.

At the Playing Field there will be an official ceremony, re-opening the fields after the recent extensive levelling and re-development, and then events will begin on the field, at about 2.00 p.m.

Firstly Fancy Dress entries will be judged. The Parish Council has kindly offered to donate a prize to the winner. Various contests will then take place on the field—Sports, Tugs-of-War and Welly Hoying, etc.

Two large marquees are to be erected, to be used for displays in the afternoon and for the Barbecue and Dance in the evening. Inside these tents teas and refreshments will be on sale and there will be displays of paintings, photographs, items of historical interest and puppet shows. Outside, there will be stalls and amusements, dog-handling demonstrations, country-dancing, bands and numerous other village activities.

The highlight of the afternoon will be the free **JUBILEE TEA** for the children of the village aged 13 years or under. If the weather permits all the children will be served outside, and at one sitting, in what should be a mammoth feast.

In the evening, to round off the day's festivities in grand style a Royal Barbecue and Dance will be held on the Playing Field, under cover. Dancing, excellent food and bar facilities will be available. Although not essential, fancy dress on a royal theme would be welcomed.

The 'Jubilee Day' will provide an opportunity for all clubs, groups and societies in Wylam to contribute to the Jubilee celebrations by making it a 'village' day, either by organising displays or by running stalls on the field. Already a number of societies have offered help. The Boys' Brigade, though mostly at camp that weekend, have agreed to help with a stall and programmes; the Brownies are running a stall; the Children's Book Group are arranging the puppet shows and displays of books; the Cricket Club have offered to supervise the Coconut Shy and another stall; the Cubs are helping with two stalls, and the Guides are demonstrating a miniature camp on the field, and cooking and selling hamburgers. The Institute have already provided rooms for meetings, without charge, and have offered use of their tables and chairs and all facilities if it is wet on the 'Jubilee Day'. The Ladies' Circle are running two stalls, the Mothers' Union have offered to run the tea-tent and the Nursery School children are to be in fancy dress on the theme of Kings and Queens, as well as helping with a stall. The Pre-School playgroup and the Toddler Group are organising a creche and the Tennis Club has offered to run two stalls. The Youth Club members will run a pop, crisps and lollies stall and the Round Table and the Playing Fields Association will be helping with tombolas and stalls.

The Parish Council have promised financial support and other assistance, and offers of help have also been received from the Amateur Dramatic Society, the Badminton Club, the Chess Club, the Football Club, Housewives Discussion Group, the Parent-Teachers Association, the Photographic Society, Shelter, the Women's Institute, the Young Wives' Group and the Local History Society.

Douglas Hamilton will supply a list of proposed stalls to any interested bodies and he or any other member of the organising committee listed above will be pleased to receive offers of help of any sort either from organisations or from individuals who wish to be associated with the events. They are particularly anxious to hear from anyone owning flags, bunting or other suitable decorations which they are willing to lend.

In the next few weeks all householders will be asked to buy Jubilee programmes which will also act as admission tickets to the Jubilee Day events—and the profits from the sale of the programmes are to be used to buy food for the children's teas. It is hoped that everyone will buy programmes and give generously to make the Jubilee tea an exciting and memorable one for the children of the village.

One special local event at the last Jubilee (in 1935) was a competition for the best decorated houses (with flags, bunting, etc.), and a similar competition is being held at the end of May for this Jubilee. Generous prizes have been offered for the 'best dressed houses' and full details of the competition will be distributed early in May.

The Round Table, and other bodies within the village who have offered help, have agreed to give all profits on the day to the Playing Fields Association to purchase children's play equipment. This equipment will provide a suitable permanent reminder of the Jubilee, and the Parish Council have promised that if the funds for the equipment are raised in this way, they will erect a suitable plaque on the field recording that the equipment was provided by the communal efforts of various bodies within the village to commemorate the Queen's Jubilee.

WYLAM JUBILEE DAY May 28th

HOW IS WYLAM CELEBRATING THE QUEENS SILVER JUBILEE?

Wylam Parish Council and the various societies and clubs of Wylam have joined with Wylam District Round Table and the Community Playing Fields Association to prepare a day which should have something for everyone. The village and playing field will be decorated and there will be something to see and do for young and old from 1.30 p.m. through until Midnight.

The Jubilee Day Programme which is shown on posters in the village includes:-

- * A GRAND FANCY DRESS PARADE on the theme 'Kings and Queens of England', from Algernon Terrace to the Field.
- * A JUBILEE FIELD DAY with loads of entertainment, sports, games and stalls for everyone.
- * A JUBILEE CHILDRENS TEA PARTY for the 1-13 year olds in Wylam. FREE for Wylam children.
- * For those with plenty of energy a ROYAL BARBECUE and DISCO in and around the Marquee and Playing Field, with Bar and Charcoal Grill Barbecue, from 8 p.m. to Midnight.

YOUR HELP IS STILL NEEDED

We will be calling at each house in the village during the week, Monday, 9th - Sunday, 15th May to issue badges for the Childrens Tea Party, sell admission programmes and barbecue tickets.

A competition is to be held for the best decorated house in the village and the Parish Council have offered to donate a prize. We hope that houses will be decorated with flags, bunting etc. between Wednesday and Friday 25th - 27th MAY.

Your help and suggestions are still required and the people to contact about the different activities are:-

Fancy Dress Parade	-	JOHN MATHEW (Tel. Prudhoe 32705)
Field Day - Stalls	-	TONY MITCHAM (Wylam 2128)
- Sports &		
Games	-	DAVID TUCK (Wylam 3507)
- Jubilee Tea	-	DOUGLAS HAMILTON (Wylam 3300)
Royal Barbecue & Disco	-	GEORGE HARPER (Wylam 3363)

Any profits on the day will be used to purchase children's play equipment, for the field. This will provide a permanent reminder of the Queen's Jubilee and, we hope, of an enjoyable day on 28TH MAY, 1977.

