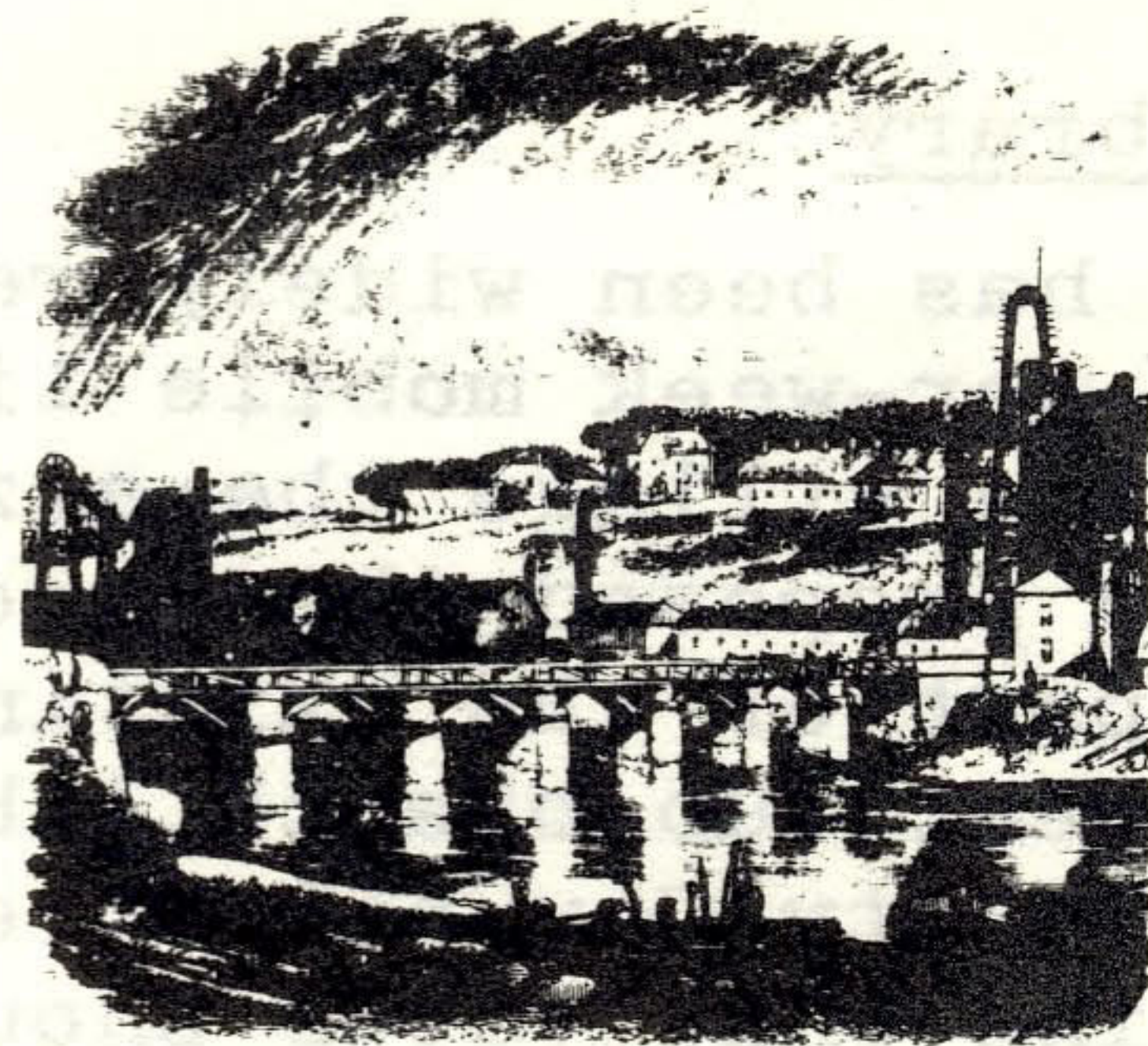


WYLAM GLOBE

The Newsletter of
Wylam Parish Council



Wylam in 1860

Well, the first issue of the "Wylam Globe" seems to have had a favourable reception, and everyone appears to support our idea of producing a periodic newsletter.

Several people wrote in with suggestions about the name, and the majority seem quite happy with the name we have chosen - so we'll stick to the "Globe". Thank you for your comments, both about the name and the layout and content of the newsletter. Incidentally we discovered that one of the early locomotives built by Timothy Hackworth was called "The Globe", so the name has links with two famous Wylam families - the Blacketts and the Hackworths!

The inclusion of a few notes about different aspects of the history of the village was one of the suggestions put forward and this will be done whenever space permits. The small illustration attracted several queries - it comes from a book published in 1862 "The life of George and Robert Stephenson" by Samuel Smiles. The original engraving is much larger than the one we use, which unfortunately is rather too small to show details clearly. The view is from just east of the railway station looking north-west. It shows the Haugh Pit at Wylam Colliery on the extreme left, whilst the tall tower structures on the right are part of the Ironworks. The bridge is in the foreground and the old school in Woodcroft Road in the centre background. Although perhaps not accurate in every detail it gives a good idea of the village 100 years ago.

Shortly after the first issue of the "Globe" was distributed, you should have received a leaflet "Local Government Digest" prepared by County Councillor D'Ambrumenil. These leaflets will in future deal primarily with County Council matters relating to the Bywell division (including Bywell, Horsley, Ovingham and Ovington, as well as Wylam), but the "Globe" will continue to cover any items of interest to Wylam residents.

PARISH COUNCIL NEWS

Dene Estate - Grassed Open Spaces

At last a major breakthrough! The legal procedures for transferring ownership of these grassed areas from Greensitt and Barratt to Hexham Rural District Council have now been completed. The District Council will now be responsible for maintenance, and this should mean more frequent cutting and a rather tidier appearance. The next task will be to get some of the dead trees replaced. Steps are also being taken to try and arrange for improved maintenance of other grass areas in the village.

'No Waiting' - Main Street and Falcon Terrace

The proposals to introduce 'No Waiting' orders along both sides of Main Street from the Bird/Ship Inn to the Ovingham road, and on both sides of Falcon Terrace outside the 'Fox and Hounds', were supported by the Parish Council as an attempt to try and reduce some of the congestion and traffic hazards in both these areas. Following public advertisement there had been a few objections to both orders, but after considering these the County Council has decided to proceed with the making of the orders as originally proposed. However, it has also been agreed that if the need arises, the idea of extending the 'No Waiting' part way up The Dene will be re-examined.

Garages on the Council Estate

Following an approach from the Parish Council, Hexham R.D.C. have now agreed in principle to build several more lock-up garages in the Council estate for use by residents.

Library

It has been widely recognised for several years that the existing one-day-per-week mobile library service is quite inadequate to meet the needs of a village the size of Wylam (now over 2,000 inhabitants) and it has been proposed that once the new primary school is completed next Easter part of the existing school building should be adapted for use as a permanent sub-branch library. The Parish Council have recently written to the County Council stressing the need for improved library facilities and asking that these should be provided as soon as possible.

Footpaths

Volunteers may be needed shortly to help carry out improvements to the footpath running along the river bank from Wylam bridge to the old railway bridge, at Hagg Bank. Parts of this path are very uneven and overgrown. Some clearance has already been done on the old ford-road. Most of the footpaths in the parish are in reasonable condition, but the best way of ensuring that they don't get overgrown is for local residents to walk them regularly! The new 2½" scale Ordnance Survey Sheet No. NZ06/16 (Blaydon) shows all the public rights of way in Wylam and a wide surrounding area, and is well worth buying.

Don't Forget

If you've any suggestions or complaints about things being done (or NOT being done) in the village, don't hesitate to contact any of your Parish Councillors (listed in the last issue of the "Globe", or write to Mrs. D. Fairless (Clerk of the Parish Council) at 31 Falcon Terrace.

DIARY OF EVENTS

In the last issue we invited secretaries and organisers of local Societies and events to let us have details of their future events for inclusion in our Diary of Events. Several provided details and these are listed below, together with one or two items of information of general interest sent to us. You may wish to mark them in your diary.

October

23rd Talk on "History of Printing in the North East" (8 p.m. - Inst.)

November

3rd - 10th Community Week (Details to be circulated)

3rd Jumble Sale (2.30 p.m. Institute)

13th Oxfam Coffee Morning and sale of Xmas cards etc. (Institute)

27th "Wylam Locomotive Engineers - Stephenson, Hedley, Hackworth"

An illustrated talk (8 p.m. Institute)

30th Toy sale for school fund (Details later)

December

8th W.I. Christmas Fayre (Institute)

11th Friends of Wylam - Christmas Tea

OTHER ACTIVITIES

Anyone interested in helping the local "Shelter" group is invited to contact Pat Hawley (Tel. 2657) for details of future activities.

Ladies Choir - rehearsals every Monday at 7.30 p.m. in the Institute.
New members welcome.

The "Thursday Club" meets (not surprisingly!) every Thursday at 7.30 p.m. in the Methodist Church and provides informal Christian fellowship for all ages.

Oxfam would welcome offers of help and new supporters - please contact Joan Taylor (Tel. 3194).

WELL DONE!

£200 raised at "Friends of Wylam" Jumble Sale.

September clothes sale made £25 for the school fund.

A coffee morning held by Mrs. J. Wilkinson of Algernon Terrace raised over £20 to buy equipment for deaf children.

NOTE

The next issue of the "Globe" will appear early in January, and all Society secretaries are requested to let Mrs. Fairless have details (in writing please) of events arranged for the period January - April 1974. Remember this is free publicity for your activities.