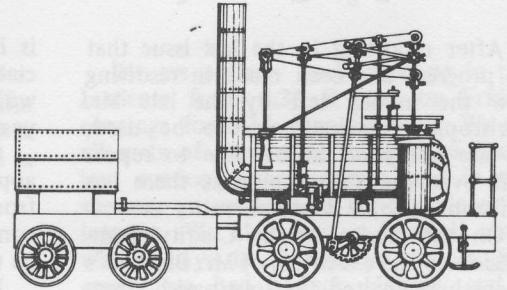


THE WYLAM GLOBE

Newsletter of Wylam Parish Council



Autumn 1980

Quarterly

Number 29

Residents confused over planning powers

One of the most valuable powers which the 1972 Local Government Act gave Parish Councils, was to permit them to comment on local planning applications. This new right was given to Parish Councils as from April 1974 when the re-organisation of local government took place, which resulted locally in the creation of the Tynedale District Council.

Queries by several residents in recent months have shown that many people are uncertain as to who makes the decisions on planning applications, and what influence the Parish Council has on them.

The position is that Tynedale District Council are the Local Planning Authority and are responsible for deciding almost all planning applications. Only proposals of strategic importance, of which there are normally very few, are decided by the County Council.

Although the Parish Council is not responsible for making the final decision on any planning applications, copies of all applications received by the District Council are forwarded to it. Comments have to be submitted to Tynedale within a period of 14 days.

A particularly useful service provided by the "Hexham Courant" is the publication each week of a list of planning applications received by the Tynedale District Planning Department. Checking this list is an easy way of keeping an eye on who is planning to do what (and seeing whether your neighbour is trying to develop a glue factory in his back garden!)

Any residents who would like more information about any particular local planning application listed in the "Courant" should contact either Tynedale District Council Planning Department (Tel. 0434 604011) or the Parish Council Clerk (Mrs. Gillis Tel. 2503).

Whenever controversial applications are received, the Parish Council endeavours to ensure that any local residents who might be affected are aware of the proposal.

In making comments to the District Council, members of the Parish Council

welcome views of residents, and anyone who wishes to comment to the Parish Council on any local planning application should pass these comments to the Clerk. It is essential that you do this quickly—as soon as you hear of the proposal,

One area of land where change has been accepted as inevitable is at the corner of Elm Bank Road and Station Road. Dr. Rowbotham's paddock was quite clearly not going to remain open for ever and it was agreed by both the



These signs and barriers should shortly be a thing of the past. With the work being carried out on the scar and riverbank along the Ovingham Road, the County Council are hoping to reduce the risk of future landslips. The road should be re-opened to traffic very soon.

since the Parish Council has to submit observations to the District Council within two weeks. It would also help if anyone who sends comments direct to the District Planning Officer, would also send a copy to the Parish Clerk so that we know what you think.

The views of individuals will inevitably vary and the comments of the Parish Council and the final decision of Tynedale Planning Committee cannot please everyone!

New developments will often affect someone else's view, but some changes are inevitable whether we like them all or not.

District and Parish Council that houses could be allowed on this site. There has however been disagreement on the number of houses. Tynedale have only been willing to permit two houses on this two-acre site, whereas the Parish Council were unanimous in their view that four detached houses, each on a half acre plot and well designed and landscaped could reasonably be allowed, with access from a private drive off Elm Bank Road.

The prospective developer, whose application to erect four houses was refused by the District Council, has appealed to the Secretary of State for the Environment and his decision will be awaited with interest.

Some progress at last on Blackett Trust

After reporting in the last issue that no progress has been made in resolving how the money left by the late Mr. Christopher Blackett was to be used, we are delighted to be able to report that over the recent months there has in fact been some development.

On the advice of the Charity Commissioners the executors of Mr. Blackett's estate have invited the four parish councils (Wylam, Horsley, Ovingham and Ovington) to establish a trust, to be responsible for deciding how the bequest should be spent to benefit the aged poor (this is the term used in the will) of the four parishes. All the parish councils have agreed to this arrangement and it

is hoped that the legal procedures associated with the formation of the Trust will be completed by the end of the year.

Once this has been done the newly appointed members of the Trust (one from each parish) will then be able to consider how the money (£40,000) can be used.

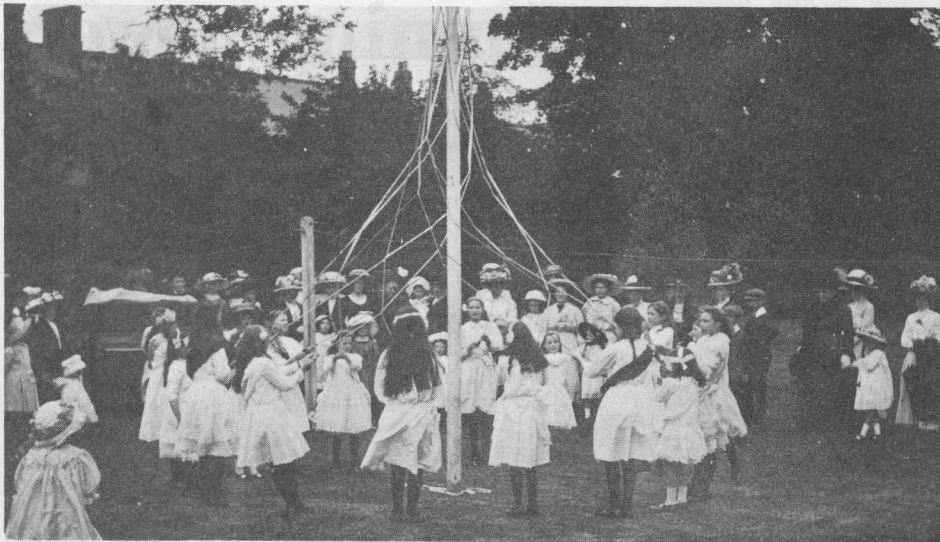
Now that it has been agreed that local trustees should be appointed to decide the best way of using the bequest, the trustees will make every effort to ensure that early agreement is reached on a suitable scheme or schemes to benefit the elderly in each of the villages.

Hagg Bank play area

Following a meeting between local parents and members of the Parish Council at which agreement was reached on the site for the small children's play area at Hagg Bank, the Northumberland Playing Fields Association is preparing a suggested layout for the area, with recommendations on suitable equipment.

To make best use of the funds being made available by the Parish and District Councils for equipment, much of it will probably need to be of the type used on the Jubilee Field, and made of timber which can be built by local volunteer labour to keep the cost down.

When the suggested layout plan has been prepared it is intended to arrange a meeting between the Regional Officer of the National Playing Fields Association and local residents at Hagg Bank to discuss the scheme, and decide how it can best be carried out using local labour.



We've not got a picture of this year's Summer Play Scheme but this delightful photograph of a fete or garden party was taken in "Jack's Field" (now McCallum's garden) in about 1905 when it was owned by the Atkinsons. The youngest children shown would now be in their late 70's—we wonder whether anyone in this picture still lives in the village. Please let us know. (lent by Misses Waller).

School grounds are for children—not dogs!

Mr. Ford, Headmaster of the village school, writes—

The School Autumn Fayre proved once again to be a successful afternoon with £128 being raised for the School Fund. I appreciate the numerous requests made to people from the various organisations in the village for support and so I am extremely grateful for the help given to the school.

In July we presented a Charity Concert in aid of Jimmy Saville's Appeal Fund for Stoke Mandeville Hospital, and once again you showed your generosity with the collection totalling £143.

Some three years ago I made a request, through the "Globe", for people not to bring their dogs onto the school grounds. This problem is again occurring, with people using the school grounds for exercising their dogs or allowing them to roam free for all day. The result is that we regularly have to clean the field before it can be used for games. Please can I ask you not to walk your dog through the school grounds and to keep

it under control especially during the day when the school gates are open.

If there are any newcomers to the village who have children who will be five years old between 1st September 1981 and 31st August 1982 and who would like them to start at the school next year, I would be very pleased to hear from you. People who replied to this request earlier need do no more as I shall be getting in touch with you early next year.

Youth Leader wanted

A part-time paid youth leader is required for the Falcon Centre on Mondays and Fridays from 7–10 p.m. Persons interested should be keen to work with young people and be prepared to develop the club as an integral part of the village community.

Further details obtainable from Mr. W. Graham, Deputy Head (Community) at Prudhoe County High School, Moor Road, Prudhoe. Tel. 998 32998.

"Man of Courage"

American authoress Beverly Lowe of Salem, Oregon, chose this title for a recent book she has written about the life of John Minto, a distant relative of hers who was born in Wylam in 1822—the year of the great keelmen's strike on the Tyne. His father was employed at Wylam Colliery, although a gunsmith by trade and John himself worked at the colliery, from about the age of ten.

The Minto family left Wylam and emigrated to America in the Spring of 1840. After a spell working in mines in Pennsylvania, John Minto was involved in a trek to the Oregon Territory in 1844 under threat of torrential rain, Indian attack, cholera and starvation, yet he survived, and took part in the Californian Gold Rush.

Eventually he became a prominent and respected member of the Oregon State Legislature. He died in 1925 at the age of 93. A copy of this book which tells the story of John Minto's life is available in the local library.

Support local classes

Adult Association classes in Wylam are generally at a "marginal" level and threatened with either closure or reduced opening. To maintain the classes as in the past more members are required so if you can cajole others to join please do so—remind them that the approximate costs are only 40p per hour for one class and only half that for two classes. Tel. 998 32998 for details of classes.

New Information Card

A copy of the latest Information Card is enclosed with this newsletter and information has been updated to the beginning of October.

Remember the Fayre?

Greg Smith reports—

This is the first issue of the *Globe* after the Summer Fayre on June 14th, and is therefore the first chance the Playing Fields Association Committee has had for thanking people for their support—the people who ran the stalls, the people behind the scenes who baked cakes etc., the people who put on displays, and not least the people who came along to brave the remorseless rain. The money raised (£280), although much lower than last year, was very creditable in the circumstances. The occasion was certainly not a washout, despite its appearance!

As you all know, the village is planning to celebrate the bicentenary of George Stephenson's birth next summer. The Playing Fields Association will be joining with the Round Table and other organisations to make that a thoroughly successful occasion, but also intends to organise a fete on the field on a separate day later in the summer. This will emphasise sports and games rather than stalls, and there won't be a marquee (so please don't rain!)

Book for the Panto

The Wylam Amateur Dramatic Society has booked the Institute on Saturday, 13th December for a pantomime. It will be performed by "Bruvvers", a professional community theatre group who perform "in the round" for schools, playgroups etc.

Tickets are £1 for adults, 60p for children and are available from Pat Buckle, 36 Woodvale Gardens, Carolyn Hawkes, 21 Woodvale Gardens or Lesley Smith, 76 Dene Road. There are a limited number of tickets so it will be first come, first served.

Summer Play Scheme proves its worth again

Margaret Hague, Chairman of the Summer Play Scheme, writes—

Once again the Play Scheme proved to be a successful venture this summer, despite initial difficulties of attracting sufficient parents to form a working committee.

There were 670 attendances at activities which were available from Monday to Thursday throughout August, and more than 100 children enjoyed an exhausting evening on the inflatables at the 'reunion' in Jack Donkey's field, on the last night of the summer holidays.

The main activities were for the 7-13 age group and included the usual trips to Hexham swimming baths, craft and drama mornings in the Falcon Centre and sports activities on the Jubilee Field. Our ventures further afield included a day at Allen Banks, a visit to the Roman Fort at Housesteads followed by a swim

New school staff

Wylam school welcomed two new members of staff at the start of term. One is Mrs. High, formerly of Mickley School, who is the new deputy head, and the other is Mr. Paisley the new caretaker who has taken over following Mr. Sayers' retirement. We hope Mrs. High and Mr. Paisley enjoy their new jobs in the village.

Another caretaker on the move is Mr. Milner—the caretaker at the Falcon Centre. He and his wife have recently moved from Ovingham to a house in Bell Road. A move that will be more convenient for everybody!

Cricketers do well

Bernard Paton reports—

The past summer has been one of the best ever seasons for the Club in recent years. The introduction of a second team has been a great success; the first team finished in the top five of the first division, and to crown it all the Juniors won the League Title!

Our thanks go to all our village supporters, but in particular to the Methodist Church for the loan of their hall, and the Parish Council for its assistance in setting up the Junior and Second XI's.

Clothing wanted

Help the Aged is appealing for good used clothing and blankets for the aged overseas. Please bring anything you have to the Methodist Church Hall on Wednesday 10th December between 10 a.m. and 6 p.m.

Donations towards the cost of shipping these clothes abroad would also be gratefully received.

in Haltwhistle open air pool, and two trips to the ice rink at Whitley Bay. A new venture this year was a supervised cycle ride down the former railway track. Despite steady rain ten children braved the elements and stayed the course to Newburn and back.

All the trips were well supported, most being fully booked with waiting lists for last minute cancellations even though charges were higher because of increased transport costs.

Our thanks must go to all parents who helped in any way, and also to Jean McCallum and Maggie McLester who are taking well-earned rests from the committee. We are grateful for grants from the Parish Council and Tynedale District Council which are used for craft materials, insurance and running costs.

The Play Scheme is a community venture and we hope that your support will ensure its continued success in 1981.

Festival of Sport

The promising start to our efforts in this competition continued in June when our Road Race and Swimming teams came 4th and 3rd in their respective finals. The festival day itself was marred by the seemingly inevitable wet weekend of the "summer".

Despite the poor conditions, Alison Wray, Athene Westlake and Alistair Smith turned in good performances in their athletics events, but our overall position in the whole Festival was a rather disappointing 13th (out of 16) mainly due to an inability to find any competitors in three events. Thanks are due to all those who organised teams and we hope we can improve our position in the next Festival.

Vandalised again

For the second time in the last two years the timber cladding on the roundabout in the children's playground in Hedley Road has been seriously and deliberately vandalised. The latest damage has cost about £50 to repair.

This is a waste of public money—which could be used towards improving the village, rather than repairing vandalised equipment. Make sure your children are not responsible for damaging public property—it wastes your money as well as everyone else's. Anyone reported for acts of vandalism is liable to prosecution.

Village Diary

NOVEMBER

- 1st-8th—Community Week.
- 13th—Housewives' Discussion Group talk "Television and Film Make-up". 19 Tynedale Close.
- 15th—Wylam School P.T.A. Wine and Folk Evening with "Nowt Spectacular". Tickets £2 from Committee Members.
- 15th—Joint Charities Christmas Card Sale and Coffee Morning. 10-12, Institute.
- 21st—Wylam School P.T.A. Christmas Fayre including large toy sale.
- 27th—Housewives' Discussion Group talk "Strengthening the Weaker Sex". 24 Dene Road.
- 28th—Wylam Playing Field Association—"Foggy Do" Disco. Institute.

DECEMBER

- 10th—Friends of Wylam Christmas Lunch
- 11th—Housewives' Discussion Group—Coffee Evening at 14 Dene Road.
- 12th—Shelter Ceilidh at Close House. Tickets available from 1st Nov. from Clare Hurford, 31 Dene Road. Tel. 2565.
- 19th—Cricket Club Christmas Ceilidh, with the Harvesters.

Arrangements for Stephenson 200 progressing

Two meetings to discuss ideas for commemorating the bicentenary of George Stephenson next year, have been held, and were well attended by representatives of village organisations and local residents.

Various suggestions have been put forward and were discussed, but more ideas would be welcome—so if you have any, don't hesitate to let us know.

Bicentenary events are likely to take place between Spring and Autumn next year, with the main celebrations being during the summer, especially in early June. Tuesday 9th June is the 200th anniversary of Stephenson's birth.

The main events planned include the following—

A Stephenson Railway Carnival

To be held on Saturday 6th and Sunday 7th June, this being organised by the Wylam and District Round Table, but all village local organisations will be invited to help, and to have their own stalls and sideshows. It is hoped that Mr. Dawson will be willing to allow this to be held in his field behind Stephenson's Cottage, where the 1975 Carnival took place.

The Completion and Official Opening of the Museum in the Falcon Centre

This is being planned to coincide with the bicentenary weekend, and it is hoped to arrange for a suitably distinguished person to open it. Prudhoe High School have kindly agreed to produce a series of murals relating to the village's railway history, on the walls of the entrance hall to the library and museum, and also to create a metal sculpture in the design of a locomotive, for display on the outside wall of the museum.

The untidy appearance of the entrance and interior of parts of the Falcon Centre will need to be improved before the museum is opened and help from anyone with skills in plastering, joinery and decorating would be much appreciated. Please contact Mrs. Gillis (Tel. 2503) or any member of the Parish Council.

Similarly models of early locomotives, and more items of local railway interest will be needed for the museum exhibition displays. If you have anything which you think might be suitable, please let us know. Ovingham Middle School have offered assistance with model making.

Plays and Concerts

The Amateur Dramatic Society and the Northumberland Theatre Company are looking at the possibility of staging a play about Stephenson, and the idea of organising a Folk Concert, with a railway theme is also being investigated.

Films and Talks

An evening on which a selection of films are shown, with non-technical talks on railways and the local railway pioneers has also been suggested.

Special Commemorative Church Service

This is being examined although the Television Companies have indicated that their programme of televised services is already fixed for next year.

Stephenson's Cottage

The National Trust are proposing to replace the present clutter of outbuildings behind Stephenson's Cottage, and to generally tidy the surroundings of the cottage. Arrangements have also been made with Miss Goalen to open the cottage at regular times next year.

Arrangements are being made for the design of a special handstamp and commemorative philatelic cover, for issue on 9th June and efforts are also progressing to trace descendants of the Stephenson family. The District Council have been asked if they would provide a special floral display in the village next year, and consideration is being given to the production of a selection of local souvenirs to mark the bicentenary.

Mention has been made of the absence of a memorial to Stephenson in the village, and the lack of any indication of the existence of his birthplace. Views on this point would be welcomed.

A local Celebrations Committee, comprising representatives of village organisations and individuals is being formed to plan and co-ordinate events.

Any ideas, suggestions, queries or offers of help in connection with the Bicentenary should be sent to Mrs. M. Gillis, the Parish Clerk, at 27 Dene Road.

(Copies of the full notes of the Bicentenary meetings can be seen in the Library).

New laws make car sharing schemes easier

On 6th October new legislation under the Transport Act 1980 came into effect which removed nearly all restrictions on sharing private cars and contributing towards the cost of journeys.

Provided that—

- the vehicle has no more than eight passenger seats.
- the arrangement for sharing is made before you start the journey.
- the arrangement is non-profit making (the real cost of running a 1500cc. car can be as much as 25p a mile so there is plenty of scope for passengers to contribute)

you may tell people that you are making an occasional or regular run and offer to take passengers in return for a payment which you may specify if you wish. You may do this as an individual, or a W.I. or church or other group can arrange a regular rota with a booking system. You may not only tell your

Can you help Scouts

We are a lively pack, meeting in the Institute from 6.30—8 p.m. on Friday evenings for 8-11 year old boys. We do all sorts of interesting things, like tracking, outdoor sports, games, and in the summer go on trips to various places of interest. We also have a football team which plays in the winter season. Recently we had a Pack Holiday and a Cuboree at Gosforth Park Scout and Guide Camp.

As we have a large number of boys coming up to Scout age and the nearest troop is Ovingham, Heddon or Ryton, the Cub and Scout leaders would like to see a Scout Troop formed in Wylam village itself so that boys would not need to travel to be in the Scouts.

If anyone is interested at all in helping the movement, and Scouting in particular (which caters for boys between 11-15 years), would they please contact me, Mrs. L. Parker, Cub Scout Leader, The Haven, Elm Bank Road. Tel. 2575.

Farm being sold

As part of the process of settling the estate of the late Mr. Christopher Blackett, the Wylam Hills Farm is now being offered for sale. The farm holding covers 300 acres, and includes the farmhouse, four cottages and 16 acres of woodland.

The property, which is described by the agents as "An agricultural investment of interest to investment managers, trustees etc.", is being sold subject to the existing agricultural tenancy of Mr. Graham.

Oxfam Autumn Fair

A very successful Autumn Fair was held by Oxfam on Charlie's Corner in early September. It was opened by Tyne Tees personality Cathy Secker and the grand total of £300 was raised.

friends or workmates or members but also tell the public by advertising in any way you like. No permissions are needed from anybody (except maybe your firm if it's the firm's car).

If these rules are followed, acceptance of a payment towards the cost of the journey will NOT be regarded as using your private car "for hire or reward" and will NOT invalidate ordinary insurance policies. Your compulsory third-party insurance will cover death or personal injury claims from your passengers. If in doubt, check with your insurers.

(Note: The rules for taxis and private hire cars and larger vehicles are different from those outlined above).

New local souvenirs - ideal Christmas gifts

To commemorate the Stephenson bicentenary several local souvenirs are being produced and will be available early next year. However it has been suggested that residents might like two or three 'new' local gifts, which could be given as Christmas presents this year.

Accordingly the Parish Council has already commissioned two pictures, using the very popular Victorian engraving of Stephenson's Cottage. The larger picture measures 11¾ inches by 8½ inches, is on gold-coloured metal mounted on a hessian background, and in a mahogany and gilt frame. A smaller copy of the same illustration, is in etched copper, and mounted as a plaque measuring 6½ inches by 4½ inches.

Only fifty of these will be available before Christmas, and they are being

sold at 'special' introductory prices of only £3.60 and £2.10 respectively.

They should be available from early November and will be sold on a first come, first served basis. If you would like one, please tell Mrs. Gillis (Tel. 2503) as soon as you receive this newsletter.

The miniature miners lamp necklets, and "Locomotion" necklets and brooches are also still available, together with the greetings cards and notelets of Stephenson's Cottage which make excellent Christmas cards and presents. All these can be bought at the Post Office, where the books "Where Railways Were Born" and "Country Walks in East Tynedale" published by the Parish Council also can be purchased, together with an attractively illustrated booklet on the life and work of William Hedley.

Library cuts likely

The effect of further Government cuts in local authority expenditure are likely to be felt more deeply next year. The library service is one where reductions in the opening hours will almost certainly be made by the County Council.

In Wylam this could mean the closure of the library on Saturday mornings. This will be particularly unfortunate since the library is heavily used on Saturdays. However although convenient and popular with local residents, Saturday opening is more expensive to provide than that in mid-week.

Reopening of road

Work on regrading the stretches of unstable bankside on the Scar above the Ovingham Road has been in progress for several months and is now substantially completed. The exposed area will be seeded with grass, and shrubs and bushes planted to stabilise the surface and help to prevent future erosion.

Work is continuing along parts of the wooded bankside below the road, to prevent further slipping. Regrettably this has necessitated destroying a number of trees on the river edge. However one compensation is that it has opened up several attractive views of the river from the roadside.

The County Surveyor is hoping to have the road re-opened to traffic very soon.

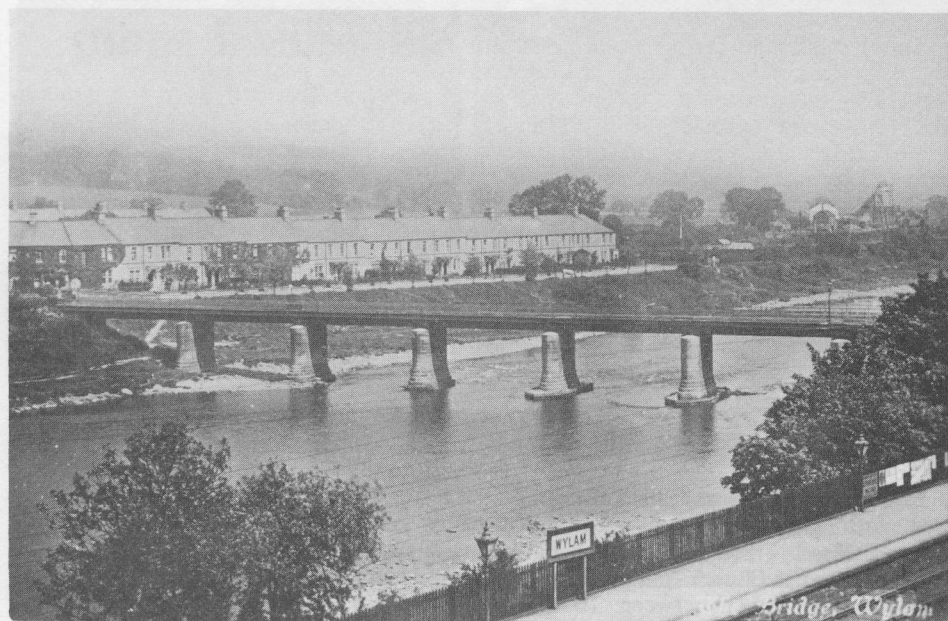
Community Week

By the time you get this newsletter you should have also received details of the Community Week programme. We have come to expect a high standard from Community Week events and we're sure this year's will not disappoint.

Please remember that the costs of maintaining the Institute premises are high (and increasing every year) and the Community Association rely very heavily on the income received during Community Week.

The more support local residents give, by attending the various events organised, the more improvements can be made to the Institute, so please join in as many events as you can—and be generous. Dr. Swindale, the Treasurer, or David Anderson, the Secretary, would be grateful for donations—large or small.

Incidentally, everyone will have been pleased to see the Institute garden looking more like it should—Andrew Priestley (with a helping hand from father) has been responsible for much of the improvement. Well done.



Another of the early postcards of the village kindly lent by the Misses Waller. Dating from the early 1920's it is the only photograph so far discovered which shows the old North Wylam Colliery (extreme right). Does anyone have a better photo of this colliery, which ceased work in the 1930's?

Name wanted for new bungalows - any ideas?

The news that the District Council have let the contract for building the nine bungalows on The Dene will be greeted with pleasure—and relief by everyone who has been following the saga of this project.

Special thanks are due to District Councillor Peter Bennett who has worked hard for many years to try and ensure that it would come to fruition. Now at long last and despite cut-backs in local authority expenditure, it is going ahead.

Work should start on the site during the next few weeks and the bungalows ought to be ready for occupation by the end of 1981.

Although it is likely to be at least twelve months before the bungalows are occupied, suggestions have been made to the Parish Council as to possible names for the new group of bungalows and the District Council have agreed to consider

any suggestion put forward by the Parish Council.

Since the existing houses in The Dene are already numbered consecutively, the bungalows will need to be given a separate name as have the existing O.A.P. bungalows, "Blackett Cottages". Ideally the name should be associated with some local feature or person past or present.

If you have a suggestion for a suitable name please send it (letter or postcard—not telephone calls) to Mrs. Gillis, the Parish Clerk at 27 Dene Road. No acknowledgements will be sent, but we'll report on the names suggested in the next issue—early in the New Year.

Incidentally the contractor has been asked to try to keep the footpath from The Dene to the Falcon Centre open as far as possible during building operations, but this may prove difficult since the bungalows are being built each side of it.