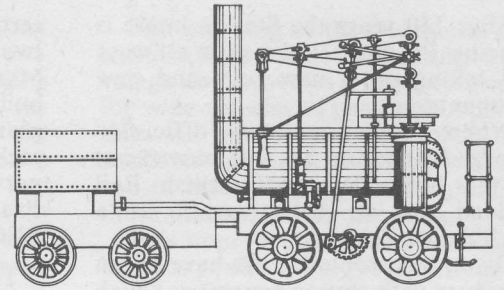


THE WYLAM GLOBE

Newsletter of Wylam Parish Council



May 1985

Number 38

Successful celebrations for N and CR 150

Many long-time residents could not remember when they had last seen as many people crowded onto the station platforms and footbridge as there were on 9th March to see "Evening Star", the last BR steam locomotive built, hauling the special trains to mark the Newcastle and Carlisle Railway 150 Celebrations.

Hundreds of people lined the trackside between Newcastle and Hexham to watch the impressive train reach speeds of over 60 mph on sections of the line. In fact the engine was running so well that on the third trip in the afternoon it ran ahead of time, leaving Wylam early, and several passengers behind!

So many people crowded onto the footbridges at Hexham and Wylam that BR were worried that the safety limit might be exceeded!

The steam special service was clearly a great success—British Rail kept the fares at a reasonable level, and the demand for tickets from both local people and enthusiasts from elsewhere in the country was such that they still made a profit, and hopefully ensured that similar steam services can be organised in future.

Certainly BR Eastern Region General Manager, Frank Paterson, and Newcastle Area Manager, Dick Taylor, were delighted with the success of the day.

Both gave considerable help and support to the Committee responsible for organising the celebrations, and in appreciation of this they were each presented with framed copies of the widely admired historical map of the railway which the Parish Council commissioned from artist Michael Seymour (who also produced the first day covers for the Stephenson 200 celebrations in 1981).

Many visitors called at the Museum on 9th March to see the small exhibition of photographs of scenes on the line between Newcastle and Hexham over the past 150 years.

Our apologies to anyone who was unable to obtain the special NCR 150 souvenirs in the Falcon Centre during the morning of 9th March, but they are

now on display in the showcase in the entrance to the Library, and can be obtained from Maureen Gillis, the Clerk to the Parish Council, at 27 Dene Road.

Stocks of several items are limited, so if you think you might give them as Christmas presents (it's less than eight months to go!) you would be wise to buy them now.



Parish Council Chairman, Philip Brooks, making a presentation to B.R. Eastern Region General Manager, Frank Paterson, when the special train hauled by steam locomotive "Evening Star" called at Wylam on 9th March as part of the Newcastle and Carlisle Railway 150 celebrations.

Public Inquiry into new housing scheme

Following the decision by the District Council last autumn to refuse Mr. H. S. Priestley permission to build 10 dwellings on the land adjoining his bungalow at the north end of Engine Dene he lodged an appeal against that decision.

In view of the local interest in this appeal the Department of the Environment have decided to hold a Public Inquiry into the proposal, and this will be held in the Institute at 10 a.m. on Tuesday, 14th May.

Any local resident is welcome to

attend this inquiry to hear what is said, and give their views on the proposal to the Inquiry Inspector, and anyone concerned is strongly advised to do so.

Both the District and Parish Councils will be represented, but the Inspector will also be particularly interested in the views of local residents.

Incidentally, although the District Council recently agreed to give outline permission for up to three single storey dwellings on this land they continue to oppose the scheme for 10 dwellings—as do the Parish Council.

New use for historic Station house?

After 150 years the Station house is severing its direct links with railways and taking on a new role, and new occupants.

When former railway official—George Bright and his wife moved out of the house last year British Rail decided not to let it again as a dwellinghouse.

Given the problems that have arisen elsewhere with station properties which have been left unoccupied or put to unsuitable uses, the Parish Council were particularly concerned that the British Rail Property Board should be encouraged to make rapid efforts to find suitable tenants, to secure the future of the station house and prevent any deterioration in its condition.

Although one prospective use fell through last year it now looks almost

certain that it will be put to good use by two Wylam residents. Local architect Martin Orchard is planning to lease the building and convert it into offices. He plans to use part for his own architectural practice, and the other part is likely to be used by local resident Bruce Reed, a consultant and adviser on EEC matters.

The station buildings are listed as being of Special Architectural and Historic Interest and whilst the conversion into offices will involve some alterations at the back of the station house, the main front and side elevations will remain unchanged.

This seems to be a very suitable use for the building—and one that should ensure that it is well maintained in future.

Extra tokens welcomed

Local pensioners had opportunity on 1st and 2nd April to collect their Travel Tokens, offered by the District and Parish Councils.

This year the District Council changed its regulations, transferring several villages (including Wylam) from the urban to rural category. This gave Wylam pensioners a bonus, enabling them to obtain £13 worth of District tokens, together with the £5 worth again offered by the Parish Council.

The arrangements made by the Parish Council for both lots of tokens to be available in the village, making it easier and cheaper for local pensioners to collect, was much appreciated. More than 200 pensioners collected their tokens on 1st and 2nd April.

Anyone who is eligible to receive the travel tokens, and who wishes to obtain them but has not yet done so, should contact Maureen Gillis, the Parish Clerk, as soon as possible.

Fine bridge repaired

Repairs to the unique former railway bridge, which crosses the river and links Hagg Bank to the village, are now in progress. The condition of the timber decking between the steel plates on which the track was laid has deteriorated in recent years, and requires replacement. This is now being done and the supports also strengthened.

Work should be completed during the summer, but in the meantime the bridge is quite safe to use.

Famous local poet

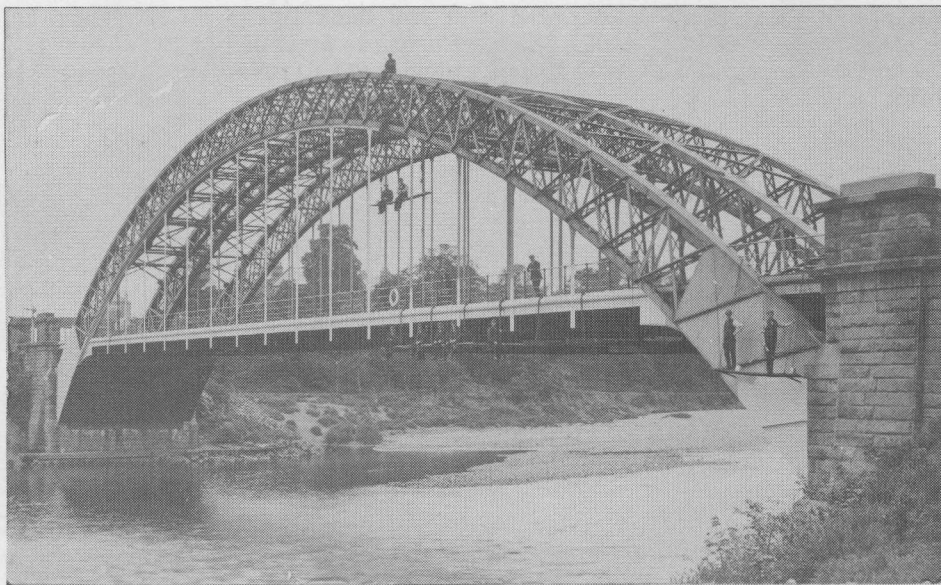
As far as we are aware, few former Wylam residents have ever achieved the distinction of obituaries in "The Times", but the late Basil Bunting, the poet who lived in Elm Bank Road during the 1970's did so with a substantial entry following his death on 17th April at the age of 85.

The quality of his poetry was not widely recognised until the mid-1960's, but in recent years the critics have regarded him as one of the finest living English poets. Wylam is pleased to have had him as a former resident.

Scouts say Thank You

The First Wylam Scout Group thank the Wylam and District Round Table for their gift of £200; this will be used to help purchase lightweight hike tents to enable some of the boys to obtain their Chief Scout Challenge Award.

This award consists of a 50-mile hike over three days; it is hoped the boys will successfully complete this challenge during the summer camp in the Yorkshire Dales.



75 years ago the N.E.R. were repainting the bridge over the Tyne at Hagg Bank, and using white paint! An enlargement of this postcard shows 15 men on various parts of the bridge, rather more than N.C.C. are using now!

Keen carpet bowler?

The Friends of Wylam have made arrangements for the free loan of a bowling mat and bowls from the Sports Council for three or four months beginning probably in September. If any other organisation is interested in sharing the use of this carpet please contact Judith Furniss (tel 2341).

Should there be sufficient interest then consideration could be given to forming a Carpet Bowling Club and purchasing a mat after the loan runs out.

Welcome to a new face

A welcome (if somewhat belated) to Sandra Lucas, who lives at Hagg Bank and who took over as librarian in the village library, at the beginning of the year. Her cheerful personality and helpful manner is being appreciated by library users. She was formerly an assistant with North Tyneside library service.

In brief

Anyone who has not got a copy of the latest Village Information Card (the yellow one) can obtain one from the Parish Clerk on request.

Parish Council notices, and lists of planning applications, are now displayed on the notice board inside the entrance to the Library.

Faulty or damaged street lights should be reported direct to the N.C.C. Divisional Lighting Depot, Burn Lane, Hexham (tel: 0434 602246).

A few copies of "Country Walks in East Tynedale", the detailed guide to 14 circular walks in the Wylam, Ovingham and Heddon areas are still available, price 70p. from the Parish Clerk.

All over-60's welcome to join Friends

1984 was a busy year for the Friends of Wylam. There were the fortnightly coffee mornings, interspersed with Bingo and slide shows—all very well supported. In the summer we had four outings—one to the Borders; a day in Whitby; an afternoon visit to South Shields; and another to Whitley Bay. Our Annual Jumble Sale, which is our only fund raising event, was another highlight. Everyone worked very hard—and had some fun, too—and were rewarded by raising nearly £600.

At Christmas more than 100 members sat down to a first class Christmas dinner, prepared and cooked by a number of behind the scenes helpers, and the Committee would like to thank all those ladies who throughout the year man the kitchens,

and without whom we could not manage.

Following the lunch, carol singing was led by Alan Sleightholme at the electric organ, and we drew on the talents of our members to round off a very happy occasion.

Already this year we have had a visit to the pantomime, and below are some further dates for your diary later in the year.

12 June—Visit to Dumfries

25 June—Visit to York

5 July—Visit to Alnwick Fair

28 Sept—JUMBLE SALE

11 Dec—Christmas Party

All over-60's in the village are most welcome to join us on any of these outings, and indeed at the coffee mornings which we hold on alternate Tuesdays throughout the year.

Speed checks needed?

The widening of the Ovingham road at Bull's Bank on the western edge of the village now provides a little more space for wide vehicles to pass and hopefully this will reduce the risk of further accidents of the type which occurred two or three years ago and highlighted the traffic hazard on the bank.

This improvement seems unlikely to have any affect on the speed of the traffic—either increasing or reducing it—as it enters or leaves the village.

The problem of speeding vehicles is a worse hazard on the Holeyn Hall Road, and the Parish Council and local residents have requested that the County Surveyor and the Police should examine all possible ways of trying to reduce the speed of traffic, either by more frequent speed checks and/or some special treatment for the road surface.



The smaller and neater poles (left) now replace the three larger and heavier poles of the old-style electricity line running from the village to the Hagg and West Wylam.

NEEB line is a great improvement

Local residents who exercise themselves or their dogs (or perhaps both) in the area between the village and Hagg Bank have had the opportunity in the past few months to compare the appearance of the old and new style overhead electricity lines which run from the riverside allotments across to Hagg farm and West Wylam.

The new line erected by NEEB is a great improvement with lower wires, supported on fewer and slimmer poles, and much less obtrusive in the landscape than the old pre-war line.

The switch-over from old to new took place on 10th April producing, we hope, an improved electricity supply. The removal of the old poles has made the views from the walkway to Hagg Bank and along that part of the riverside much more attractive.

New member to be co-opted onto Council

Although publicity was given to the existence of a vacancy on the Parish Council following the recent resignation of Mrs. Ann Thomson as Parish Councillor, no residents requested a by-election (which incidentally saved the village over £300!) and the Parish Council have now to co-opt a new member onto the Council.

Given the composition of the Council, present members felt it would be appropriate to try and co-opt someone from an age group not represented on the Council—i.e. in the 18-30 or 50+ age groups.

However, it was agreed to consider anyone (of whatever age!) who expressed an interest in joining the Council and was eligible to do so.

Notices have been displayed on village notice boards in the Library, in the Post Office and Institute from early April, inviting anyone interested to contact the Parish Clerk by the

beginning of May.

The Council will have decided who to co-opt by the time of the Annual Parish Meeting (14th May) and it will be announced then.

Well picked pickers

This year's Litter Clearance Campaign on 20th April was well supported by many village societies and organisations, and by a number of individual residents, totalling 130.

Almost twelve months months litter was cleared that morning, and the village looks much better as a result.

Our thanks to everyone who helped with the campaign, and especially to the National Park Department staff whose assistance was again very much appreciated.

VILLAGE DIARY

MAY

- 2—County Council elections
- 7—A.G.M. Photographic Society. Institute, 8 p.m.
- 13—Institute A.G.M. Institute, 7.30. p.m.
- 14—Annual Parish Meeting. Institute, 7.30. p.m.
- 22—Wylam Discussion Group: 'Birds of China'. 12 Dene Road, 8 p.m.
- 24—Northumberland Theatre Company: 'Poor Fool'. Institute, 7.30. p.m.

JUNE

- 1—St. Oswin's Church Fayre
- 22—Field Day
- 30—Wylam P.T.A. 'Family Games Evening'. Wylam First School, 6 p.m.

Great day planned for 22 June—please come

The Playing Field Association have made a determined effort this year to avoid clashing with other popular events* held in neighbouring villages during June.

Saturday, 22nd June is the day chosen for the Village Field Day, and members of the Playing Field Committee have promised that this will be a fine, warm and sunny day (hopefully!).

A wide range of entertainments, side shows and stalls are planned, and all village organisations have been invited to take part; any who by chance have

not been approached should contact Derek Ellis, 14 Dene Road (tel: 3394).

The Field Day and the evening barbeque are both organised by the Playing Field Association not only as fund raising events to help maintain and improve the playing field, but also as the main "summer show", giving everyone an opportunity to enjoy themselves.

Please try and come—and bring your family and friends—on 22nd June.

* *Other events to book in your diary: Matfen Hall Fête on 8th June, Ovingham Goose Fair on 15th June, and Stelling Hall Fête on 1st June.*



The Remembrance Day service at the War Memorial last November drew wide local support as this photograph by David Petrie shows.

Local Committee to aid cancer fight

A fund raising Committee for the North of England Cancer Research Campaign has recently been formed in Wylam on the initiative of Linda Mason, who together with her mother felt that they would like to do something to help fight cancer following the death of Mr. Arthur Mason in January, and in memory of her brother, Eric, who died some years ago, also from cancer.

The new group launched their campaign with a coffee morning and bring and buy sale on 6th March. As usual, the village was most generous and almost £600 was raised by this effort.

This charity is not new to Wylam, as Miss Jane Rowell pointed out at the coffee morning—her mother, Lady Rowell, had worked for the cancer campaign for many years and had raised a total of over £50,000.

If you are interested in helping in any way to support this campaign please contact Linda Mason on Wylam 3666, or Judith Furniss, who would be pleased to hear from you.

New opening hours will help visitors

Visitors to the village on Thursday afternoons this summer will be able to call at both Stephenson's Cottage and the Rail Museum in the Falcon Centre during the same afternoon, for the first time ever!

The fact that both these attractions have previously only been open at different times during the week has been a frequent source of irritation, and some embarrassment.

Now, thanks to the co-operation of Miss Goalen and the National Trust, the cottage will be open on Thursday afternoons at the same time as the Museum—from 2.00-5.00 p.m. The cottage will also be open on Wednesday, Saturday and Sunday afternoons.

Library book problem?

If you are housebound and have difficulty in changing your library books the Friends of Wylam would like to help. Contact Judith Furniss (tel: 2341) or Joyce Howe (tel: 2436) who will put someone in touch with you.

New County Councillor

Since this newsletter will have to go to the printers before polling day in the County Council elections we can't tell—and wouldn't dare to predict—who will win!

What we do know is that we shall have a new County Councillor following the retirement of Timothy Kirkhope who has been our County Councillor for the past four years. We thank him for his efforts on behalf of the village during this period.

The candidates seeking to take his place are (in alphabetical order):

Bill Carrigan (Liberal Alliance), of 2 The Bungalows, Treatment Works, Horsley.

Peter Glasspool (Conservative), of The Firs, Broadway Gardens, Fourstones (tel: 043 474 624).

Felicity Reed (Labour), of 11 Front Street, Hagg Bank, Wylam (tel: 2662).

All candidates have canvassed and distributed leaflets widely and most residents who want to question the candidates will have had the opportunity to do so.

Whatever the result of the election we hope that the village will once again achieve its fine record of one of the highest turnouts of voters in the county.

Don't miss this date

This year's Annual Parish Meeting, on Tuesday, 14th May, will be the last chaired by Philip Brooks who is standing down as Chairman of the Parish Council later in the month.

"I have thoroughly enjoyed being Chairman over the past six years. The Council has been able to accomplish a number of important improvements in recent years, and I am very pleased to have been able to take an active part in these. I shall continue as a back-bench member of the Parish Council, as well as District Councillor."

All residents are invited to attend the Annual Parish Meeting, which provides an ideal opportunity to express your views to the Parish Council on anything that you think needs to be done—or not done—in the village.

Make a note in your diary, or on the calendar, to remember to come to the Institute at 7.30 p.m. on Tuesday, 14th May.

Thanks from OXFAM

A house-to-house collection organised by OXFAM in March raised a total of £240 for the Ethiopia Famine Relief Fund. OXFAM thank everyone who collected and contributed to the Fund.

Correspondence relating to this Newsletter should be addressed to Mrs. M. Gillis, The Clerk to the Parish Council, 27 Dene Road, Wylam. (Tel. 2503).
Printed for Wylam Parish Council by The Gilpin Press, Houghton-le-Spring, Tyne and Wear.