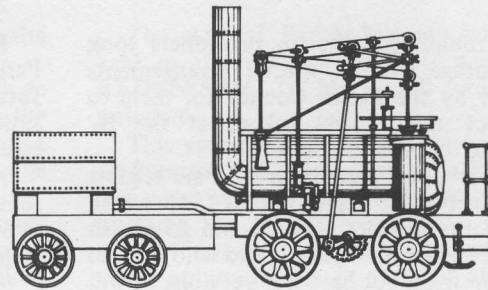


THE WYLAM GLOBE

Newsletter of Wylam Parish Council



May 1986

Number 40

Plans for Centenary Celebrations taking shape

Construction of the Parish Church began on 1 January 1885, when George Hedley, the major benefactor laid the foundation stone. Sadly he died before the building was completed. The new bells were hung in June 1886 – and the first use to which they were put was to toll of his death on 2nd July.

His brother and co-benefactor, William lived to see the completion of the Church and presided at the opening and dedication of St. Oswin's on All Saints' Day, 1st November 1886.

To celebrate the Church Centenary this year, the Church Council is planning a series of events which will be taking place from November through to November 1987.

To mark the start of centenary year the Bishop of Newcastle will lead a commemorative service on Sunday 2nd November – almost exactly 100 years since the original dedication service took place.

The next event in the centenary programme is to be a Christmas Fair on 22 November and other activities are being planned for subsequent months.

One major highlight in which all village organisations, schools, clubs and societies and individuals will be invited to join is a grand village Festival, to be held in the Autumn of 1987.

Don Harrison of 22 Falcon Terrace has been given the job of Festival Director and is enthusiastic about the idea. He envisages a bumper Harvest Festival, extended to include sports, concerts, exhibitions, debates, plays etc. to cover all the remarkable range of activities which takes place in our village.

The Centenary Committee hopes that every organisation associated with the village will stage an event during the Church Centenary year to mark the changes which have taken place over the past 100 years, and to express their hopes and ambitions for the future.

All local organisations listed in the 'Village Information Card' are being contacted and the ideas put forward for discussion as possible events for the Festival include:—

— A bumper Harvest Festival — in-

corporating a Flower and Vegetable Show – Flower Arrangements, an Art/Photographic Exhibition, a Local History display – Wylam Past and Present.

An exhibition/conference shared by the various caring/relief organisations (Shelter, Amnesty, Oxfam, Mind etc. etc.)

A cricket/football match (in costume) between village pubs and churches – and why not other sporting competitions (bowls or darts?) involving other local groups?

The Centenary Committee would welcome the first reaction of organisations and individuals to these ideas – by the end of July if possible, but there's



An attractive scene at North Wylam Station in the days of steam in the early 1950's. For enthusiasts the engine number is 67339. (Courtesy: J. W. Armstrong).

- Schools events – a concert, play or special service in Church, involving children of all ages.
- A play or musical of historical and/or religious interest.
- A debate involving local politicians (plenty of scope here e.g. 'Is Wylam today a more contented community than it was 100 years ago – what will it be like in the 2080's?')
- A grand centenary musical celebration (or perhaps more than one) involving a concert, dancing and entertainment (to satisfy all tastes).

still opportunity for completely new ideas to be considered so if you suddenly have an 'inspired' thought as to what should be done, please contact Don Harrison (Tel. 3271).

During the centenary year the Church Council plans to make a number of improvements to the interior of the Church. They are also pledged to give substantial support to the Cedarwood Centre, Meadow Well Estate, North Shields, an 'open house' maintained by the Church where local people can meet

(Continued at bottom of next page)

Travel token claims

Around 200 Wylam pensioners took advantage of the special arrangements made by the Parish Council for them to collect their travel tokens at the Institute on 1st and 2nd April.

Any other pensioners who are eligible to receive the travel tokens (£13 worth from the District Council and £5 worth from the Parish Council) and who wish to obtain them but have not yet done so will now have to obtain the District Council's tokens from the Council Offices at South Road, Prudhoe (Tel. 998 32281) or Hexham House, Hexham (Tel. 0434 604011); the Parish Council's tokens are available from Maureen Gillis, the Parish Clerk.

Goodbye—and thank you

Following the recent departure of Ian and Jean McCallum to Edinburgh, another couple who have been active in local life — Alan and Shelagh Butterfield, have recently left the village to live near their son and his family at Bubwith, York.

Alan was a former Parish Councillor, and represented the village on the District Council for seven years, and he and Shelagh have been associated with several local organisations during their period in Wylam. We thank them both, and wish them a long and happy 'second retirement' in Yorkshire.

Stephenson Court flats

Stephenson lives again? Well not quite but John Firth of Wylam Hall, who is one of those behind the new development of flats on Stephenson Terrace is planning to incorporate pictures, plans and other features relating to the Stephensons and railways within the new flats — to be named 'Stephenson Court'.

Work on the flats is now well advanced and by the time they are completed, the site landscaped and the electricity line moved, the appearance of that end of Stephenson Terrace will be greatly improved.

Centenary Celebrations

(Continued from page one)

and where a ready ear is always available to listen to those with problems.

St. Oswin's historian and Churchwarden Colin Tyson is writing a history of the Church and parish, and would be pleased to hear from anyone who has information which might be included.

St. Oswin's belongs to the whole village and the Church Council hopes that everyone will join in this celebration of 100 years of Wylam's history — and looking to the future as well as the past.

More details of the celebrations will be included in the Autumn issue of the 'Globe'.

Village Diary changes

For several years the Clerk to the Parish Council has kept a diary of the future events planned by local organisations — with the aim of trying to ensure that major events do not clash.

Although this will continue, a new idea is also being introduced, which will allow anyone to see what is planned months ahead.

A year-planner chart is being displayed in the library in the Falcon Centre, and all village organisations are asked to add details of events they have fixed for the remainder of 1986. This will enable members of the public, as well as other societies and groups to see what is going to happen — and when.

Shelter needs helpers

The Wylam Shelter Group would welcome anyone who is willing to help with the fund raising efforts run by the group during the year. The group doesn't meet very often so attendance is not an onerous task.

Nearly £1000 was raised last year through the Jumble Sale, Ceilidh, house to house collection and several other events. This money is sent to Shelter headquarters with a request that as much as possible is redirected to the Tyneside Housing Aid Centre. If you are interested in helping, please contact Felicity Reed (Tel. 2662) or Alan Jones (Tel. 2556).

In brief

The Wylam Post-Natal Support Group has recently used their coffee money to donate several booklets to the village library. These include publications on such subjects as mothers writing about the death of a baby — and about Post-Natal Depression; miscarriage; breastfeeding; pregnancy and parenthood.

Anyone is welcome to borrow any of these booklets on request from the librarian, Sandra Lucas.

For more information about the Group itself please contact Emily Platt (Tel. 2813) or Jane Welch (Tel. 2776).



'Birds in Northumberland' — the ever popular course of talks and outings with Bryan Galloway will return to the Falcon Centre on Wednesday evenings in the Autumn. Literary discussions will be held on Thursday mornings with Sue Green.



It is over a century since some of the houses in Hagg Bank were built, and to mark the occasion the Northumberland Water Authority has recently completed the construction of a new septic tank to take the sewage effluent. There have been various problems with the old tank, resulting in occasional pollution of the river, and the new arrangement should eliminate these problems in future.

Plans from the past

One of the best sources of information about the village in Victorian or Edwardian times is the School Log-book, but for details of what developments were planned — the old Hexham RDC building registers are invaluable.

The following extracts are taken around the turn of the century:

June 1897

Rebuilding of an Inn on the Main Road for Newcastle Breweries (subject to means being provided to flush the urinal!) (This was probably the Ship or Bird Inn).

May 1898

Letter from Mr. Bedlington stating that the old houses at the Square and Bridge End would be demolished in a week or two. (These stood on the site of River House and the Toll House).

May 1898

Plans for a stable for Mr. M. Lynch, Innkeeper, at East End, N. Wylam. (These are behind the Stephenson's Arms off the end of Falcon Terrace).

October 1898

Plans for Mr. Lamb's houses approved (Dene Terrace East/West).

December 1898

Plans of a Gate House at N. end of Wylam Bridge for the Wylam Bridge Company (for the present toll-house which replaced one at the south end of the bridge).

April 1899

Mr. Lamb reported that his houses (Dene Terrace) will be ready to occupy in a few weeks.

May 1899

Major Blackett notified that a cottage in the occupation of a hind at Florist Hall is unfit and must be closed.

August 1899

Plans of a lock-up shop at North Road for Mr. Lamb, Grocer. (This is the little building at the end of Dene Terrace West — still a shop!)

July 1900

Plans for two cottages at Florist Hall for Major Blackett. (The present Florist Hall Cottages).

Plans for eighteen houses on sites near Wylam Wood Farm, South Wylam for Mr. Wm. Strachan, Builder, Haltwhistle. (These are the houses at the top end of Wylam Wood Road).

December 1900

Plans for four semi-detached villas on sites near the station, South Wylam for W. Strachan. (Almost certainly on The Crescent).

April 1901

Plans for three cottages at Holeyn Hall for Hon. C. A. Parsons. (These are the houses at the cross-roads).

July 1901

Plans for a villa on a site near Bridge End, for E. J. Young. (This is now River House — built for Ned Young, the miller at Wylam Mill).

Need staff?—Let us advertise your vacancies

The opportunities for employment within the village have fallen in recent years with the closure of the former tyre factory and Laws Stores and bakery — but new businesses have been set up with Finesse hairdressing salon and CERES consultants in the Stationmaster's house.

At the end of last year 72 adults living in the village were registered as unemployed and in an effort to try and match the needs of shops and other businesses in Wylam looking for employees — and those residents in the village who are looking for jobs, we shall be happy to include in future issues

of the 'Globe' any job vacancies in the Parish of Wylam.

Space does not permit us to include jobs outside the village, and although the Globe only appears two or three times a year, we may be able to help someone locally.

Any Wylam shopkeeper, business or publican who has a vacancy and can offer employment, in the village in October/November is asked to send details to Maureen Gillis, Clerk to the Parish Council at 27 Dene Road and details of the vacancy will appear (free) in the next issue of the Globe in October.

New Leisure Centre

Tynedale's new Leisure Centre which is being built next to the Wentworth Car Park and opposite the station in Hexham should be open for use by the end of July, when various special attractions are planned, and 'open-days' are to be held.

The Centre aims to have something that will appeal to all ages and interests and will be a centre for major theatrical and musical attractions.

It has a main hall suitable for a wide range of sporting activities, including badminton, netball, basketball, cricket, volleyball, roller skating, tennis, table tennis, 5-a-side football and hockey — with seating for 300 spectators. There is a four-rink bowls hall and a fine conditioning suite with a fitness training circuit.

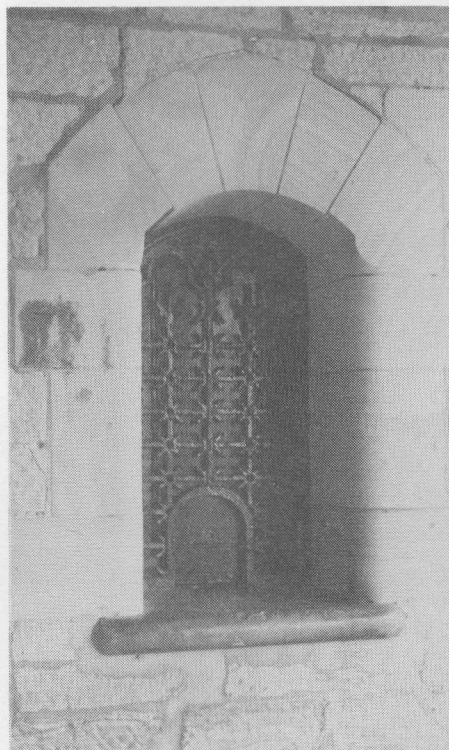
But the Centre will also be available for other social functions and leisure activities such as concerts, dances and banquets. The main hall will be capable of seating up to 500 people, with smaller rooms suitable for such functions as wedding receptions, conferences and coffee mornings.

A comfortable lounge bar, and an attractive cafeteria are also being provided within the Centre where you can relax.

All age groups will be welcome; after school and Saturday morning clubs are planned for children; younger children will have soft-play equipment and a creche is being provided where parents can leave very young children under supervision; a variety of special activities is proposed for senior citizens, and ladies will have their own recreation sessions.

Clubs, groups and individuals will be able to use the facilities on a pre-booked or casual basis, and for those who want coaching, regular courses for all standards will be organised to meet demand.

A brochure giving more information about the Centre is available in the village library, and further details can be obtained by contacting the Recreation Officer at Prospect House, Hexham (Tel. 0434 604011).



How mean can you get! In recent months someone has removed (stolen) the attractive wrought iron grille from the booking office hatch at Wylam Station.

Keep hedges in trim

Several complaints were made to the Parish Council last year about trees and overgrown hedges obstructing footpaths. The problem is a particular nuisance in the built-up part of the village, where people using the pavements are sometimes forced to walk in the road.

Please check that trees, bushes or hedges around your house and garden are not creating any inconvenience, or are likely to cause an injury to anyone passing on the pavement or highway.

Where complaints and problems of this type occur in future, the Parish Council will send a standard letter to the owner asking that action is taken to cut back the hedge or trees.

The Parish Council hopes that residents will co-operate in eliminating the causes for these complaints.

Dates to remember

The Annual Parish Meeting will be held in the Institute at 7.30 p.m. on **WEDNESDAY 21 MAY**. All residents welcome.

This year the Village Field Day will be on Saturday 28 June — a week later than last year, and we hope it will be a little warmer.

A wide variety of stalls, side-shows and other entertainment is planned and all village organisations and businesses have been invited to take part; any who have by mistake not yet been contacted should get in touch with David Lamb at 10 Dene Road (Tel. 2688) as soon as possible.

In addition to the usual attractions it is hoped to include some special displays as a contribution by the Playing Field Association towards the Hackworth 200 celebrations.

No move necessary

Three families who didn't live in the village have now become Wylam residents without having to move house!

From April 1st Nos. 1, 2 and 3 Street-houses were officially transferred by the Local Government Boundary Commission from the Parish of Heddon on the Wall in the Borough of Castle Morpeth, to the Parish of Wylam in the District of Tynedale, where they join No. 4 — the end house in the row which has always been in Wylam.

As far as is known this is the only change to the boundary of the parish which has taken place since the parish was created. We welcome the residents of Nos. 1, 2 and 3 and are glad that you are now 'legally' part of Wylam.

"I'm glad I came!"

One new resident who did have to move house to come to Wylam is Mrs. Norma Allen, the new Warden of the Anchor Housing Association flats at Blakett Court.

A former resident of Whitley Bay, she is well pleased with the welcome she has received, and commented, 'I knew before I arrived that Wylam had a reputation as being a pleasant and friendly place — and I'm delighted I came'.

Groceries + Antiques

At a time when food shops in several villages are closing down — it is encouraging that the long-established 'Gillroy's Stores' is continuing as a grocer's shop under its new owners Mr. & Mrs. Dillon, who will also be selling antiques — never previously sold in that shop!

The Dillons have moved to Wylam from Gosforth and we wish them success in their venture.

Project offers educational opportunities

A project, designed to provide educational opportunities for unemployed adults in Tynedale, is now in progress.

A wide variety of classes in various courses is available on such topics as Use of Computers, Typing, Book-keeping, Languages etc. etc., at only nominal cost to the student, and facilities throughout Tynedale are being provided for use by the unemployed, including workshops, computers, photographic equipment, music, sports and recreational amenities.

These classes are planned for anyone

who is aged 18 or over, is unwaged and lives in Tynedale. No UB40 is required. They are being held in people's homes, in community centres, church halls and even in schools!

Anyone interested in further information about what is available should contact Hilary Bennison, the Development Officer in charge of the project, who is based at the Department of Community Education, Queen Elizabeth High School, Hydro Building, Hexham (Tel. 0434 602786 in office hours). She will be pleased to help.



Castle Hill House, Wylam. 10448

An early photograph of Castle Hill, when still a private house. Its future as a Convalescent Home for the R.V.I. has been under consideration by the Newcastle Area Health Authority recently.

Successful campaign—but a warning to dumpers

The spring litter clearance campaign has now become an established event in the village calendar (second only to Community Week!) and this year's clearance, on 12 April was better supported than ever with over 100 children and adults taking part, and representing almost all village organisations, as well as many individuals.

The weather improved for the occasion, and sufficient litter and rubbish were collected to fill a large skip.

Many thanks to everyone who helped — although the results of your efforts are never permanent — the village always looks better for it.

The most unusual item collected this year was a supermarket trolley dumped on the riverbank below the station. How it got there is anyone's guess — but its owners wouldn't be 'impressed'!

Nor are the Parish Council or the Country Park Wardens impressed by the behaviour of one resident (from Woodcroft Road?) and two or three allotment tenants, who insist on dumping garden refuse in the small copse which lies at the bottom of the Doctors' path and next to the allotments.

Please keep your rubbish to your own garden or allotment and let it rot there

and don't dump it in a public area, which is part of the Countryside Walkway, provided and maintained at public expense and for public enjoyment!

Help for local groups

The County Library is now able to offer a helping hand to harrassed club secretaries and community groups.

Following the introduction of micro-computers for public use, the County Library service now also has a range of other equipment which will be available for use by community groups in Northumberland.

The new equipment includes electric typewriters, duplicators, stencil cutters, a video camera, lettering machines, display boards, etc. Additional equipment will be added in due course.

There will be no charge for the use of the equipment though deposits may be requested. Some of this equipment is now available at Prudhoe Library, and any group or society interested is recommended to contact Prudhoe library direct (Tel. 998 32540).

Buses—what future?

The future of local bus services after next October is uncertain — and likely to remain so for some time.

None of the bus companies want to continue to run their present services through Wylam (which are commercially unprofitable) and the frequency of services after October will depend to a large extent on what financial inducement the County Council (who are the Public Transport Authority) can offer the bus companies to keep them going.

Whilst both the Parish and District Councils accept that some cut backs in local bus services may be inevitable following the new Transport Act they have emphasised to the County Council the importance of retaining a basic network of services for those who rely on buses, and who have no alternative means of transport.

It's a silage clamp!

Recent construction of Robert Graham's new silage clamp, opposite the farm, confused many people who were uncertain as to what was planned.

The position of the clamp was moved slightly further along Holeyn Hall Road than originally intended, to reduce the impact on the farm cottages.

Once grass has grown on the earth walls of the clamp and over the ground churned up during construction the site will be much less prominent.

Anniversaries special

There seem to be more special anniversaries than usual to celebrate in Wylam this year.

Not only the Church Centenary and the Timothy Hackworth Bicentenary — but it is also the 150th anniversary of the building of Wylam Bridge (opened in 1836) and the 50th anniversary of it being freed from tolls in December 1936 — as the bronze plaque at the end of the bridge tells us.

Our next issue (in the Autumn) will be a bumper one, giving much more about these three important anniversaries in Wylam's history.

Two substantial houses in the village also celebrate their 100th birthdays during 1986 — Elmfield on Station Road (now the home of Mr. & Mrs. Anderson) — and Wormald House (which incorporates the butcher's shop) was built for Joseph Wormald, a colliery overman from Prudhoe, and is now the home of Mr. and Mrs. Wanless. Both these houses are the same age as St. Oswin's.

Correspondence relating to this Newsletter should be addressed to Mrs. M. Gillis, The Clerk to the Parish Council, 27 Dene Road, Wylam. (Tel. 2503). Printed for Wylam Parish Council by The Gilpin Press, Houghton-le-Spring DH4 4BA