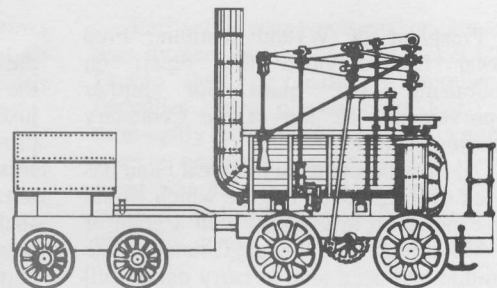


THE WYLAM GLOBE

Newsletter of Wylam Parish Council



Autumn 1996

Number 60

“Something for everyone” in Community Week

November is not the most welcoming month in the year, but at least in Wylam we have the annual Community Week which provides an enjoyable variety of activities, with something to appeal to almost everyone.

This year is no exception, and there are several attractive new events, as well as many of the regular favourites.

Please support as many of them as you can. Full details will be contained in the Institute's Community Week programme which will be delivered to every house in the village.

The main events include:

Saturday, 2nd November

Charity Card, Gift and Craft Fair.
Wine and Wisdom Evening - organised by Pete and Viv Smith.

Sunday, 3rd November

Joint Community Week Evening Service in the Methodist Church. Choose your favourite hymn (see item on the back page).

Monday, 4th November

Fashion Show - Chain-store Seconds.
Celebration of Mass in St. Oswin's Church Hall.

Tuesday, 5th November

Friends of Wylam Coffee Morning.
The Life and Times of Beatrix Potter.
Evening talk and slide show.

Wednesday, 6th November

Talk and demonstration on Cane & Rush seating on furniture.

Thursday, 7th November

Soup lunch by the W. I.
Evening Whist Drive.

Friday, 8th November

100 years of Fashion. Organised by the Drama Society.

Saturday, 9th November

Gardeners' Society Coffee Morning and plant sale.

Sunday, 10th November

Remembrance Day Service 10.00 a.m. at St. Oswin's, followed by a procession to the War Memorial for 11.00 a.m.

Your right to vote

The 1997 draft register of electors will be published on 28th November and if you want to vote in the General Election next May (or whenever) you MUST be on that list. To make sure you are on the list phone the Electoral Registration Officer (01434 652200) now.

Future events include:

23rd November

Bowls Tournament

7th December

Christingle Service followed by tea.

15th December

Handle's Messiah - St. Oswin's

11th January

Playing Field Jumble Sale

25th January

Burns Night Celebration



Popular Tyne Tees television weather-man Bob Johnson brought fine weather with him, as well as his pleasant sense of humour, when he opened what proved to be a very successful Village Show held over the weekend of 14th and 15th September

(Photo by Brian Japes)

Divided views on National Cycle Route plan

Almost 100 people crowded into the Institute on 16th September to learn more about the possible proposal to route a National Cycle Network along the old railway track, through Wylam's Riverside Country Park between Hagg Bank and Stephenson's Cottage.

Mr. David Gray of 'Sustrans' an organisation involved in developing cycle networks throughout the country, explained that they were involved in planning routes for cyclists between Carlisle and Newcastle, as part of a National Cycle Network, and that the idea of using the former wagonway track had been suggested.

In a lively discussion a range of views for and against were expressed. There was

general acknowledgement that the increase in the use of the track by pedestrians, cyclists and horseriders was causing conflict and congestion at busy weekends and that greater publicity and promotion of it as a National Cycle route could make the situation much worse. It was agreed that efforts were needed to develop alternative routes for cyclists, which would attract some of them away from Wylam, and reduce the pressure at weekends.

Officials from the County and District Councils attended the meeting and heard the concerns expressed. The Parish Council will now be having discussions with the County Council on how these problems can be dealt with, and requesting more details from Sustrans as to what they propose.

Extra funds are needed before improved plans for Institute can go ahead

President of Wylam Institute, Fred Parker has provided this report on fundraising and plans for further improvements, as part of the Centenary Building Project.

To date the Centenary Appeal Fund has raised over £58,000, a figure which would have increased to £65,000 with a grant of £7,000 offered by Tynedale Council, if the Institute had been able to carry out its full building improvement plan during the year. So far almost £29,000 has been received from donations, reserve funds and the Centenary Celebration programme, the Parish Council have contributed £4,000, the Blakett Trust £10,000, with another £15,000 from other charitable trusts.

The top priority of the Institute's Plan is the installation of a lift to the Munro Hall on the first floor. If this is to be achieved and justified, the Institute will be required to provide for an increase in the use of its services by a wider range of activities and organisations than the 18 or 20 clubs and societies, and the occasional public inquiries, blood-donor sessions, private parties, jumble sales and social functions for which the premises are used at the present time. Improvements to many of the existing facilities, heating, furnishings, decor, sound insulation and a convenient range of meeting rooms of varying sizes are now desirable.

The costs of a revised and more enterprising scheme of improvements than that originally planned are now being discussed and these will need to be agreed before any new applications can be made for additional financial assistance.

Total funding requirements for the plan in full will now exceed £100,000. Opportunities through the National Lottery sources appear likely to be limited over the next 12 months.

The Community Council who provide advice on potential sources of finance for village halls and voluntary groups have been most helpful and various sources have been explored.

The Appeal Fund has received contributions from many village residents with personal donations, support in organising and attending the various centenary programme events, and from several village clubs, societies and groups involved in these events, some of whom have also made donations to the fund.

The Institute Committee is committed to undertaking work next year, but the extent to which the Building Improvement Plan can be achieved in full, will depend upon some additional local financial support being offered. The Committee hope that further offers of help will be made by local residents and groups - and if you are willing to assist, please contact Fred Parker (852575) direct or call or write to the Institute office (852498).



All walkers and no cyclists in this view of the Country Park - but will increased publicity and possible designation as part of a National Cycle route mean that in future it will be dominated by cyclists?

Following the public meeting last month at which strong views were expressed, the Parish Council will be having discussions with the County Council who own and control the land.

Successful events so far - and more to come

Major changes to the Institute's entrance were completed in August with the construction of the new access ramp for disabled people and alterations to the entrance porch, hallway and office. This development marks the first phase of the Institute's Centenary Improvement Plan and it has received unanimous praise from everyone who has seen it.

Following the official Centenary Party on 11th April the Institute's 100th year has continued to be celebrated with a programme of special events which have attracted many more people to the Institute. The Young Musicians Garden Party in July was enjoyed by a good audience and the first Village Show for many years held in mid-September proved a major highlight of the Centenary Celebrations.

Opened by the popular Tyne Tees T. V. weather man, Bob Johnson, there were over 1000 entries in the various classes and between 700 and 800 people visited the show in the Institute and the Methodist

Centre. A tremendous amount of work was put into organising the show, which was greatly appreciated by everyone who took part or visited the displays. (Will it become a regular event?)

On the sporting front, the Cricket Club's Quoits Competition introduced a new activity to the village and another Croquet Competition was successfully held.

Several more major events are planned within the Centenary programme over coming months. On Sunday, 15th December, Ryton Choral Society will present Handel's Messiah in St. Oswin's. Then on January 30th and 31st and February 1st, the Drama Society will be presenting the Children's Musical "My Hat" produced by Jo Quilliam. During February and March various fundraising schemes are being considered, including a Mock Auction/Silent Auction, '60s Dance Night/Supper Dance - details to be announced in the New Year.

Christmas Card Sale

Please don't buy all your Christmas Cards and gifts before Saturday, 2nd November - because that's the morning fixed for the ever-popular Annual Christmas Charity Card, Gift and Craft Fair at the Institute. Open between 10.00 a.m. - 12.30 p.m., admission is free.

Many national and local charities will be there with a superb range of cards, gifts and wrapping paper for you to choose from, with a fine selection of crafts. An excellent opportunity to do some of your Christmas shopping, and support worthwhile charities at the same time. After you've bought your cards and gifts, enjoy a relaxing cup of coffee.

Drama Society play

Alan Ayckbourne's "Table Manners" will be produced at the Institute on Thursday, Friday and Saturday 28th, 29th and 30th November at 7.30 p.m. It is one of his "Norman Conquest" trilogy (after the name of one of the characters). The 'plot' is another example of the author's consummate skill in creating hilarious situations which mirror the way some people we know might actually behave. (Not us, of course!)

Tickets price £3 (£2 concessions) will be available from Wylam Tea Shop and from Vera Walton, 2 Rose Cottage Tel: 852235 - or from any member of the Dramatic Society.

It can be fun with the Gardeners' Society

Residents may be unaware of the change of name of Wylam Horticultural Society to that of Wylam Gardeners' Society - a decision voted on, after much discussion, at the Society's A.G.M. in April of this year. The aims, however, remain unchanged and that is to widen the knowledge and skills of those interested in gardening in a variety of situations from a window-box to extensive acres. Apart from a programme of speakers covering a wide range of topics during the year, visits are also arranged perhaps to a local garden or a Stately Home, and there is always a social evening around Christmas time. Records indicate that the Society was established as far back as 1907. Since 1991 an inter-society Quiz has been held with Stocksfield and Corbridge Gardening Societies and recently Snods Edge has joined this annual event. It has proved to be a great opportunity to meet up socially as well as

discover how little or how much one knows about things horticultural! New members are welcome - contact Secretary, Iris Millward on 853682.

This year the Society also took over the responsibility of tending the War Memorial and flower tubs around the village - a task previously undertaken by Mr. Peter Clarke for several years. A small working party was formed by Sarah and Olwyn Fittes, Georgina Peel, Ros Fairless, Sue Nicholson (from Drama), Angela Craven (who volunteered to water the tubs near the playing fields), Iris Millward and last but not least, very welcome help from Joe of Wylam Nurseries. The Parish Council pays for the plants so this is really a joint venture between the local council and community volunteers! The first planting session was in June, and the next change of plants will be in time for Remembrance Sunday.

Womens' Cricket team

Earlier this year a womens' cricket team was formed within Wylam Cricket Club. During the first season a number of friendlies were played (and lost!) but thoroughly enjoyed by those taking part. A weekly coaching session on the Playing Field was set up and winter coaching is currently being organised. Next year will see the team joining Northumberland Womens' Cricket League. Anyone interested in being part of womens' cricket or assisting with sponsorship, please contact either Captain Carolyn Power at 1 Tyne View, Vice-Captain Katharine Walker at 2 Dene Terrace East or Coach, Chas Earl at 92 Dene Road.

New ramps for all

1996 looks like being the year of the ramps - with three 'public' buildings in the village providing, or planning, ramps to make access much easier. The new entrance ramp to the Institute is a great improvement and the Methodist Church have acquired lightweight folding ramps making movement by wheelchair within the church simpler, and are also planning to construct an outside ramp to the front entrance.

Now St. Oswin's are launching a public appeal for funds to build a ramped access into the main entrance of the church. This will be a more difficult and expensive project than the Institute ramp and St. Oswin's would be grateful for contributions from local residents.

For more information contact the Vicar, Richard Bryant (Tel 853254) or one of the Church Wardens, Don Harrison (853271) or Phoebe Smith (Tel 852522).

Working together

This autumn, Wylam Methodist Church, St. Agnes' R.C. Church, Crawcrook, St. Oswin's and Horsley United Reformed Church will be asked to take the final steps in agreeing to work together under the terms of a written Covenant. If those steps are taken the Covenant will probably take effect in the first half of 1997. Although a good deal of working together has occurred for some years the Covenant will be a firm commitment by the churches not to act separately in any situation where joint action is possible and relevant. Relevant not just to the churches themselves but also to their service to the community. One such service is working with young people and there is now a need for more adults to give time, so that the demand on each individual willing to help is not too great.

Profitable jumble

The Wylam Housing Group (formerly Shelter) thank everyone who helped and supported their Jumble Sale and Auction last month, which raised a splendid £1050. Well worth all the effort involved.

The unsold jumble also went to good homes - the Red Cross, Cyrenians, Oxfam and the Prudhoe Youth Centre second-hand shop. Nothing was wasted!

Save your waste

A new 'Green List' giving information on the local arrangements for recycling is being distributed to every house in Wylam with this newsletter.

Please read the leaflet and try to remember to separate out from your waste those items which can be recycled. Take your bottles, cans, plastics and papers to the recycling containers in the War Memorial Car Park. Other items which are collected by various residents and organisations should be taken to the addresses given in the leaflet.

A separate Tynedale Council leaflet on the disposal of rubbish is also enclosed.

All men invited

The popular programme of talks for 'Men at Home' continue on the second Wednesday of each month in the Methodist Church Centre.

13th November - The Pennine Way

11th December - Development of
Written Language

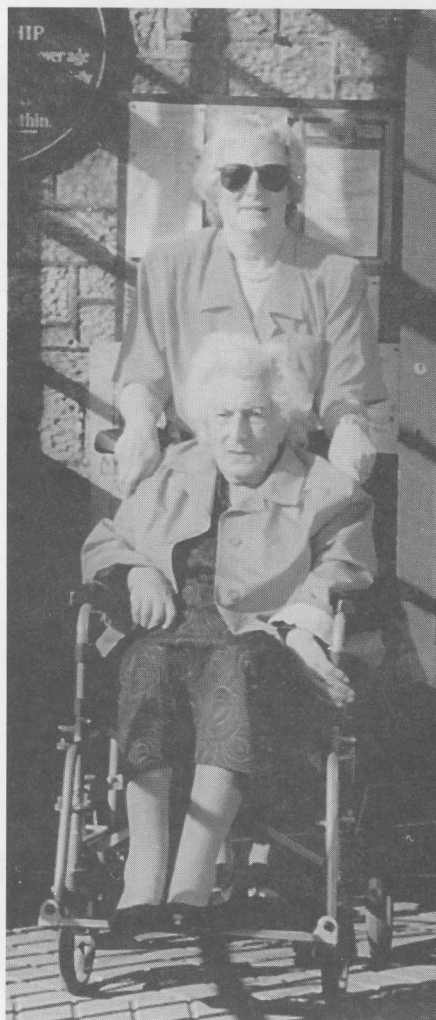
8th January - Our Mining Heritage

Most of the talks are entertaining and informative and of general interest. Local men (of all ages) are invited to each of these talks - new faces welcome.

Coffee is available from 10.15 a.m. and talks start at 10.30 a.m.

Northumberland history

Books on local history and especially old buildings, often seem to be of interest to Wylam residents, so a new book just published on 'The Lost Houses of Newcastle and Northumberland' - containing 150 photographs and information about many of the large houses which have been demolished over the past 200 years, should make a fascinating Christmas present for many folks. Price £6.95, copies should be available at most good booksellers.



Just enough space to squeeze in this photograph of Mrs. Marian Young with daughter Pat Buckle, the first wheelchair users on the Institute's new ramp.

Faulty street lamps

All street-lamps are now individually numbered, and if you see any lamp which needs repair please report it direct to the Street Lighting Depot (Tel (01434) 602246 or Freephone (0800 616792) giving the identification number.

More active Crime-watch groups needed to stop this (see below)

Following the public meeting held in the Institute in April, to discuss problems of crime and vandalism in the area, a 'Wylam against Crime' Working Group was formed to consider how best to tackle local crime.

The importance of trying to establish a network of active Neighbourhood Watch schemes, covering the whole of the village, was agreed to be a high priority.

Residents who attended the meeting in April, and who live in an area without a Neighbourhood Watch group, have now been approached and asked if they would be willing to help set up a group to look after their neighbourhood. Several people have now agreed to do so, and Mike Henderson,

Chairman of the active and successful Riverside Neighbourhood Watch has kindly offered his help and advice to these new groups.

Several parts of the village do not yet have active Watch groups - and both the Parish Council and the Police are keen to try and achieve full coverage. If you are not sure whether your street is within an active Watch area, and would be willing to assist in setting one up, please contact Mike Henderson (Tel 853125).

Incidentally, booklets and a video giving advice on Crime Prevention can be borrowed from Mike, or from any Neighbourhood Watch group chairman.

Dog walkers along the Scar path on the 9th October were the first to see the results of one of the worst acts of wanton vandalism in the village for years. The new memorial seat (pictured below) had been completely destroyed, and the footpath signpost on the Ovingham Road cut down.

If anyone has any information about these incidents, we hope that they have already notified the police. The Parish Council have written to the relatives of the late Brian Purvis, expressing extreme sorrow at this act of vandalism, which sadly coincided with the anniversary of his death.

This incident should alert everyone to be vigilant - there are mindless idiots about who need to be caught and punished.

Trip to the Food Show

The Discussion Group and the W.I. are organising a trip to the B.B.C. Good Food, Cooking and Kitchen Show at the NEC in Birmingham on Saturday, 30th November. The bus will leave the War Memorial Car Park at 8.00 a.m. and return about 10.00 p.m. The journey is about four hours each way, allowing about six hours at the show.

If 25 people go, the total cost (bus, show ticket and driver's tip) will be £23 each, but if the bus is full the price drops to £15 each. So bring your friends! Cash or cheques for £23 to Lynne Petrie please, at 8 Stephenson Terrace. Any rebates, depending on numbers, will be given on the bus.

A Singing Community!

There's always a united Church service to help start off our Community Week. This year it's at the Methodist Centre and will be a service of favourite hymns chosen by you - the people of Wylam! This will be held on Sunday, November 3rd at 6.30 p.m. Let Rev. Richard Firth know your personal choice. Give him a ring on 852143 or write him a note, c/o 17 Stephenson Terrace.

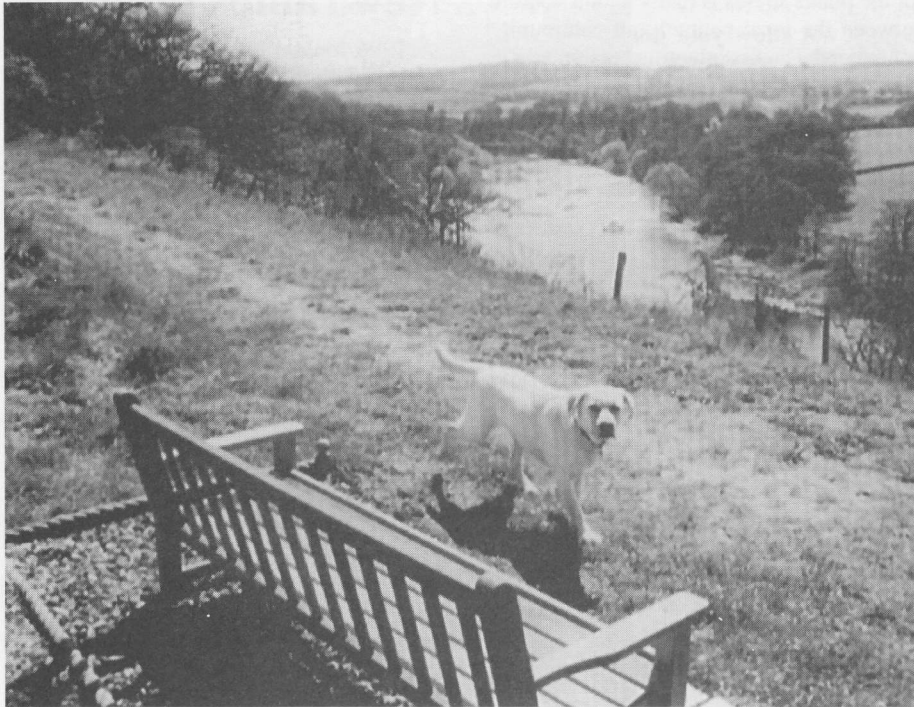
He will then try to do the impossible, that is to please as many people as he can! Everyone is welcome to come along to the service, which will be followed by the usual refreshments and a chance to chat to your friends.

Christmas gift ideas

Looking for something different with a 'Wylam flavour' to give for Christmas this year - well Pam Johnson (Tel 852731) has copies of videos of the successful Institute Centenary Concert which she produced last March - which would be well worth viewing again over Christmas.

Other Wylam souvenirs which make attractive Christmas gifts are the range of Institute Centenary pottery, and the book of old photographs showing Wylam 'as it was'. The books will be available at the Christmas Card and Gift Sale on 2nd November, and pottery at the Coffee Morning on 9th November.

Correspondence relating to this Newsletter should be addressed to D. Petrie, The Clerk to the Parish Council, 8 Stephenson Terrace. (Tel: 852577)
Printed for Wylam Parish Council by The Gilpin Press, Houghton-le-Spring DH4 4BA.



We make no apology for reprinting this photograph which appeared in the Summer issue of this newsletter showing the attractive seat installed on the Scar, in memory of the late Brian Purvis. Readers will be appalled to learn that in an act of mindless vandalism in early October the seat was sawn-up and totally destroyed. If anyone knows, or has suspicions as to who might have done this - please phone the Police or contact David Petrie, the Clerk to the Parish Council (852577).

Ken John's Supper Club?

Once again local stalwart Ken John completed the Great North Run last month in under three hours. His sponsors have provided over £150 to the Institute's new cutlery and crockery fund. The Institute Committee are now planning to utilise part of the Parish Council's annual grant to improve and extend the Institute Catering equipment. Any additional contributions from village residents to this special fund would be warmly appreciated.

A new Institute Supper Club is being established to take advantage of these improved facilities. Bookings for private parties, special anniversaries, weddings etc. will be able to benefit from these. Please telephone the Institute office (852498) for more information.

“Child Shoe Box Christmas Appeal”

Are you willing to help children in Bosnia this Christmas by supporting the 'Child Shoe Box Appeal'? If so please fill a shoe-box with soft toys, books, pens, pencils, crayons, chocolate and sweets and deliver it (together with £2 to cover transport costs) to Elizabeth Robson at River House (opposite the War Memorial) before 15th November. She will then pass the boxes to the Tynedale reception point, for transporting to Bosnia.

Several Wylam residents helped with this appeal last year, and it would be good to encourage even more to do so.

If you would like more information please contact Elizabeth (Tel 852096).