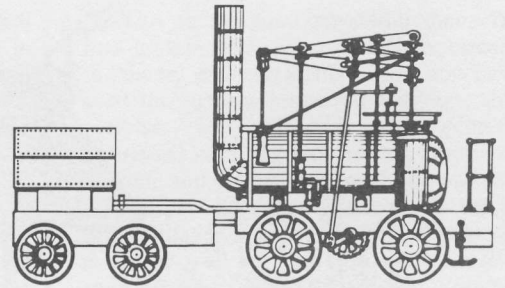


# THE WYLAM GLOBE

Newsletter of Wylam Parish Council



Summer 1998

Number 63

## Plenty to enjoy in fine weather on 27th June

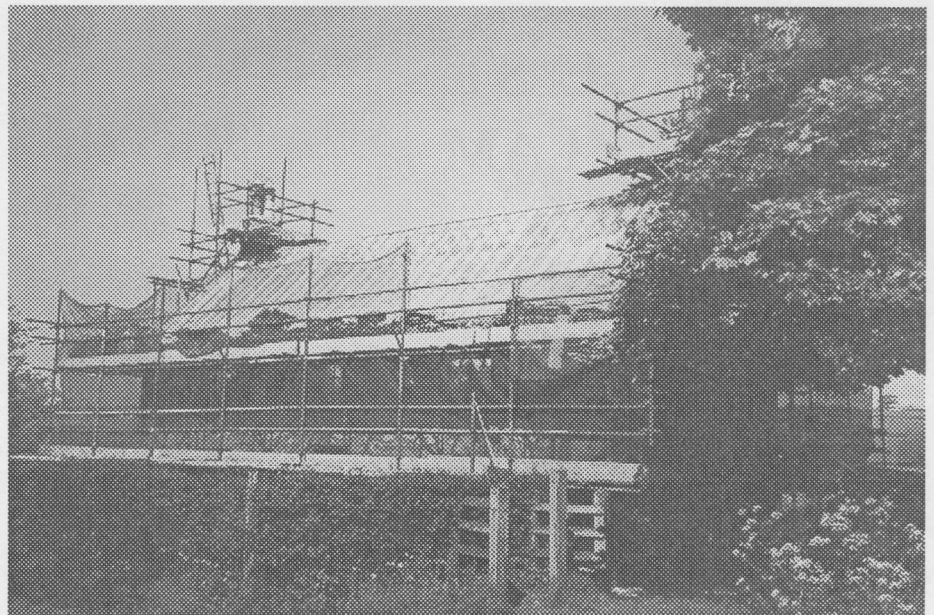
Wet! Wet! Wet! Not again this year! The sun should shine for this year's Summer Fair on Saturday, 27th June. It is the least the summer weather can do. Years ago when it was possible to hire a marquee, ladies sometimes had to wear wellies when serving the tea, but the show went on. Last year was a disaster. With the rain falling solidly for at least two days beforehand, the field became a swamp and there was no way that the Fair could be held. Fortunately, the Methodist Church held their bookstall and allowed space for several other stalls in their hall - out of the rain.

For 1998 several very popular groups of entertainers will be back again, 'Boots 'n' Boogie Line Dancers, The Gorman School of Irish Dancers, Sergeant Eddie's Animal Collection and the Ovington Tynedale Brass Band. By public demand Martin the Magician will be making an appearance and as usual there will be commercial stalls and many from village groups and organisations.

Sporting activities at the Fair will include a Basketball Shoot Out organised by members of Newcastle Eagles and the official launch of the new Basketball facility on the hard-surfaced area. The Fun Run for adults and over 9's and the children's races for the under 9's will all be run as usual and it is hoped that the Football Club will be organising a 5-a-side football competition.

The Secondhand Book Stall will be held in the Methodist Church Centre (not on the playing field) from 10.00 a.m. to 4.00 p.m. Admission will be by the purchase of a Summer Fair Programme - which will also allow entry to all the Summer Fair Events on the playing field during the afternoon.

This year the Barbecue will be held on a different day from the Fair. Saturday, 4th July has been chosen for an American-themed barbecue with American Jazz being played by the West Jesmond Rhythm Kings. Tickets for the barbecue will be available for purchase at the Summer Fair.



*George Stephenson's cottage as it was a few weeks ago with the exposed timber framework of the roof covered in plastic sheeting. Extensive renovation is being carried out by the National Trust and the cottage should be re-opened by mid-August, the 150th anniversary of Stephenson's death.*

## Stephenson's Cottage

By chance the major repairs now being carried out to George Stephenson's cottage, coincide with the 150th anniversary of the death of "The Father of Railways". He died at his last home, Tapton House, Chesterfield on 12th August, 1848. The necessity for repairs to the birthplace cottage has been apparent for several years - deterioration of the stone walls caused by the hard cement render and a weakening roof structure. The availability of grant has enabled the National Trust, who own the cottage, to arrange for work to be done this summer. The contract started early in May - and will hopefully be completed by the middle of August, perhaps before the 150th anniversary.

## Local Inquiry starts into housing plans

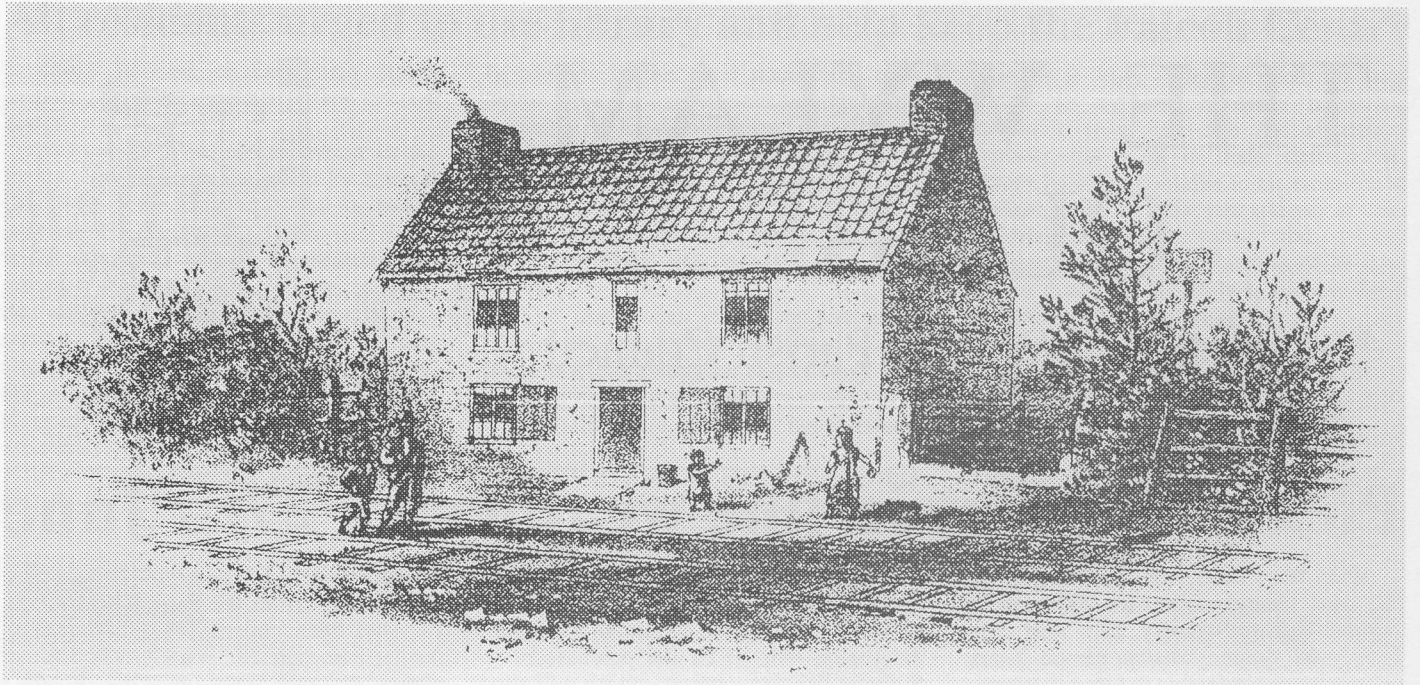
By the time that this newsletter has been distributed to all houses in the village, the Public Inquiry into the Tynedale District Local Plan - which will set the pattern for land-use planning within Tynedale until 2006, will have commenced in the Council Offices in Prospect House, Hexham. Starting on 23rd June, the early sessions of the Inquiry will establish various important strategic issues, such as the number of houses and where they should be provided within Tynedale during the period of the Plan. The Inquiry will continue, with various breaks, until early October.

As far as the proposals by agents for local landowners and developers, who want farmland fields on the edge of Wylam Village (off Blue Bell Lane and Holeyn Hall Road) taken out of the Green Belt to

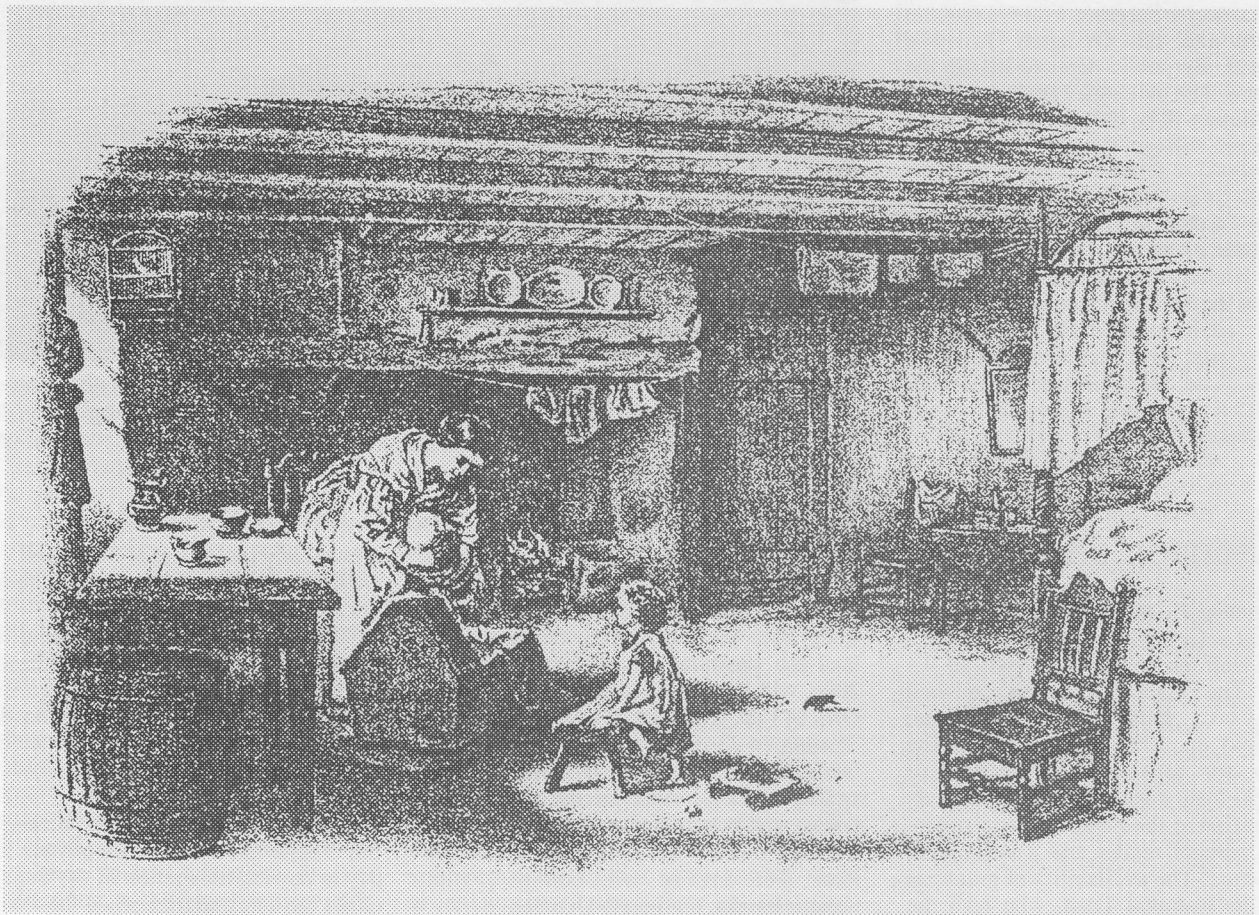
allow many more houses to be built - these are likely to be considered by the Inquiry on 8th and 9th September.

Any local residents who would like to attend these "Wylam" sessions to hear what is said, are welcome to do so (space permitting) but will not be allowed to speak. However as the timetable for the Inquiry may need to be changed as it progresses, anyone wanting to attend is recommended to contact Mr. Michael Lee, the Programme Officer responsible for the day to day administration of the Inquiry, to check the date and time when the "Wylam" sites will be considered. Mr. Lee is based in the reception office at Prospect House, Hexham - his direct telephone is (01434) 652319.





## GEORGE STEPHENSON'S BIRTHPLACE WYLAM, NORTHUMBERLAND



Illustrations published in 1881 during the Centenary of George Stephenson's birth, showing the cottage where he was born.



## Cancer Research Campaign charities merge

On 1st April the North of England Cancer Research Campaign, which has carried out active fundraising in this region for over 60 years, merged with the Cancer Research Campaign - a national charity which is celebrating its 75th anniversary this year. The Wylam Committee will continue to raise money for cancer research and what is raised locally will stay in this region to be spent on projects here. These include the Cancer Research Unit at Newcastle University, which was named a "Centre of Excellence for Cancer Research" in 1997.

The North of England Cancer Research Campaign has been based at the shop in Saville Row in Newcastle and this will continue to function. Recently the Cancer Research Campaign opened a shop in Hexham selling articles given by supporters. The Hexham shop will do "bag drops" in a 20 mile radius - including Wylam. Since the merger anyone who now fills a bag for the Hexham shop can be assured that they are contributing to the same charity that people in the village have supported for so many years.

## Impressive Institute

This is the first newsletter since the new-look Institute was officially re-opened in January. Most residents will by now have seen the greatly improved and extended premises, and will have been suitably impressed with the extra rooms, improved kitchen and toilets, the new lift and the elegant new lighting and decor. On behalf of the village we pass our grateful thanks to everyone who worked so hard to achieve such excellent improvements to Wylam's main community centre. The Institute is now very suitable for a variety of functions and if you would like to hire rooms, please contact Karen Webster, the Institute Secretary (tel: 852498).

## Chernobyl Children

Thanks to splendid fundraising efforts and the generosity of many Wylam residents and friends, the money needed to bring 14 children from the area of Belarus, affected by the Chernobyl Nuclear Reactor explosion in 1986, to the Tyne Valley for a summer holiday, has now been raised.

The children will be staying for four weeks from 5th July; we hope they enjoy themselves and we offer our thanks to everyone who has helped to make their holiday possible.

## Wheelie-bin trial

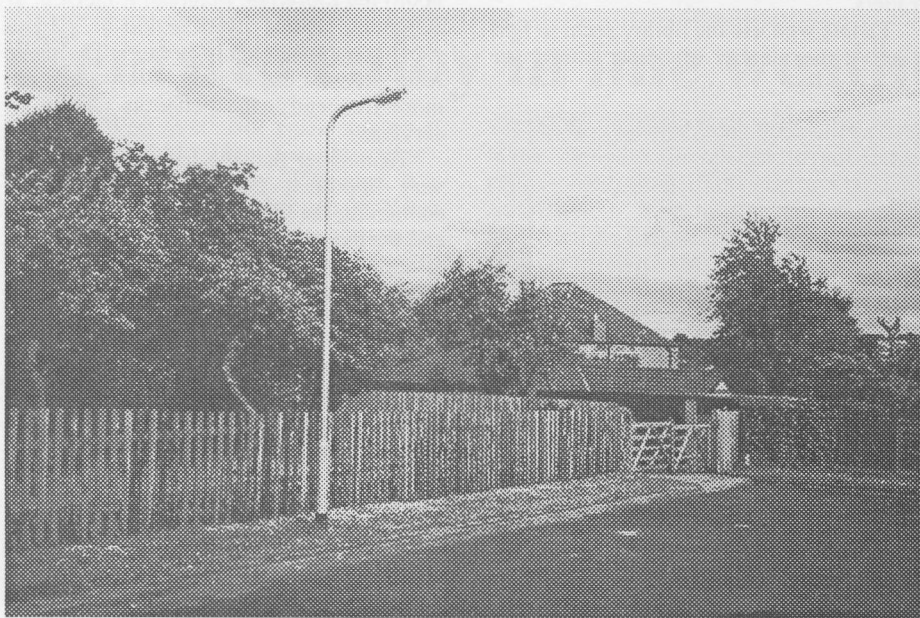
Many residents will have seen from the local press that before deciding whether or not to introduce a wheeled-bin refuse collection system, Tynedale Council is going to carry out a trial scheme in the Prudhoe and Wylam areas between October and April. Full details of how the scheme will operate will be distributed to every house in the village before the trial starts. The scheme will be very closely observed and monitored and residents will be asked to report any problems experienced during the trial.

## Cubs need helpers

Helpers are desperately needed to assist in leading the Cubs and Scouts. Helpers work on a rota basis, so that the job is manageable and not too demanding! It would be a great shame if either the Cubs or the Scouts had to disband due to lack of adult help and support. Anyone willing to help - even for only a short time is asked to contact Ken John (tel: 853355).

## Please clear weeds

Until more permanent arrangements can be made to deal with the problems of controlling weeds growing out of road gutters, or along the back of footpaths, all residents and shop and business owners are asked to remove them from the frontages of their own property. Keeping them tidy in this way helps to improve the appearance of the village, at no cost to the rates. One or two Parish Councillors and friends have been setting an example doing some of this recently.



*It's not often that a street lamp justifies a photograph, but this is the lamp that the Parish Council provided earlier this year in Woodvale Gardens, the cost of which was partially paid for using money raised by the sale of cans, bottles and paper collected through the village waste recycling scheme. The more you collect, the more money is raised!*

## More books needed

One of the popular traditions of the village Summer Fair is the second-hand bookstall which enables many people to choose a fresh selection of reading material for their holidays.

All takings from the bookstall are shared between the Playing Field Association and the Youth Groups run at the Methodist Church.

Please look through your cupboards and bookshelves and see if you can find some books which you no longer want. All types of books - for children, adult fiction or non-fiction, paperback or hardback will be welcome.

It would be most helpful if you could deliver any books to the Methodist Church Centre on the evenings of Thursday, 25th or Friday, 26th June when they will be gratefully received.

If you cannot deliver them please contact Brian Japes (tel: 852151) or Philip Brooks (tel: 853520) who will be happy to arrange to collect them from you.

Incidentally this year the bookstall will be held in the Methodist Church Centre - not on the playing field and will start at 10.00 a.m. - admission by Summer Fair Programme.

## Trim those hedges!

Hedges and trees which overhang pavements or footpaths can create a hazard for pedestrians - please make sure that any hedges, bushes or trees on the boundaries of your garden are trimmed back. If complaints are received the Parish Council Clerk will write to the householders concerned requesting them to cut back the offending hedge. The prompt action by two or three residents contacted recently is appreciated. If residents do not respond to the "polite request" from the Parish Council, the problem may have to be referred to the County Highways Department who have ultimate responsibility for ensuring that public roads and footways are not obstructed.

## Wild flower garden

After allowing the noxious weed "Japanese Knotweed" to spread unchecked on the side of the Country Park walkway, below the Falcon Centre, for many years, the Parish Council and the County Council Countryside service will be taking action soon to eradicate it and to create an attractive wild flower area out of this prominent - but rather neglected piece of

# All residents urged to use library and help keep the Falcon Centre

Clive Jackson of Ovingham Road, writes on behalf of the Save Wylam Library group:

Because of a serious reduction in the grants paid to Northumberland by Central Government, the County Council has had to make severe cuts in several services again this year and as part of the "Amenities" group, the libraries are of lower priority than education, social services and the fire service. The County Library service has already suffered badly over several years, but although Wylam Library has been threatened before, it has survived so far - we want to ensure it continues to do so!

For Northumberland villages of this size, Wylam Library offers a good service.

In addition to the usual fiction and non-fiction books, it has volumes in large print, a section on local studies and a well-used children's section where they can obtain information to help with homework and school project work, as well as story books. At holiday times there are occasional story telling sessions and sometimes puppet shows.

The library has videos, spoken-word tapes and C.D.'s for both adults and juniors (there is a loan charge for these items). It is also a local information service point and is trying to develop a service for house-bound readers.

People who use the library seem to find it good; the number of books issued per

member is high. What it needs to help ensure its survival is more registered members, so if you are not already a member, but want to make certain that library facilities continue to be available in Wylam, make sure that you and any of your children at home, join the library membership now. Membership of Wylam library gives you the right to borrow from other libraries in the county.

If you call into the library on Falcon Terrace any Tuesday or Thursday (2.00 p.m. to 5.00 p.m. and 5.30 p.m. to 7.30 p.m.) or on Saturday morning (9.00 - 12 noon) the Librarian, Maureen Rogerson, or Assistant, Helena Bates would be glad to enrol you (membership is free). The more residents who use Wylam library - and the more frequently, the better its chance of survival.

Remember that the Falcon Centre is a very important facility for the village, containing the library, museum, youth club and the playgroup - make sure we continue to use it as fully as possible - so that the County Council will have no justification for closing it - and selling it!

## New Councillor needed

A new Parish Councillor is now required following the resignation of Christine Hammill from Hagg Bank, for family reasons. The Parish Council have to fill this vacancy by co-option and whoever is co-opted will serve with the other seven existing Parish Councillors until next May.

If you would like to join the Parish Council for an initial nine month 'trial' period, now is your chance. Anyone interested is asked to write to David Petrie, the Clerk to the Parish Council at 8 Stephenson Terrace, Wylam by Friday, 10th July, with information about themselves and their interests.



*The old blacksmith's forge, previously part of the Wylam Colliery workshops in West View, which was attractively converted into a cottage and tile and craft workshop for Debbie Conley last year. Congratulations to all involved in this scheme, which has greatly improved this corner of the village.*

## From old forge to Tile and Crafts Workshop

It's now exactly a year since Debbie Conley started her Wylam Tiles and Crafts business in the Old Forge Workshop in West View, behind Wylam Garage. Debbie's parents, Alan and Dorothy had acquired the dilapidated forge building several years ago, but without a definite use in mind, although knowing that it was the last surviving building from Wylam's important industrial past and had almost certainly been used during the construction or repair of the famous locomotives "Puffing Billy" and "Wylam Dilly". Fortunately for the old forge, whose future at one time looked uncertain, Debbie's graduation in 1996 with a B.A. Hons degree in Ceramics from Edinburgh and a wish to establish a craft business in Wylam, was a stroke of good luck. Conversion of the derelict forge into a combined cottage and workshop was the ideal solution and the sensitive scheme which Martin Orchard designed for the Conley family, has made an eyesore into an attractive feature in the village.

Debbie produces hand-painted and engraved patterns on tiles for kitchen, bathrooms and fireplaces, as well as house-name and number plaques, mirror surrounds, table tops and mosaics. She will also undertake special commissions. Attractive examples of her work can be seen in the workshop which is open every day except Monday (tel: 854082). We wish Debbie every success in her business.

## Tell your neighbours

A reminder to any resident intending to do anything to your house or garden which might affect your neighbours. Please tell them what you are proposing to do - before you start doing it; if it is something that needs planning permission, consult any neighbours who may be affected, **before** you finalise the plans. Good, early communications between neighbours can often avoid unnecessary friction and prevent people "falling out".

## Wylam Tennis Club

Summer and Wimbledon are here and the tennis club is looking for new members. We have a thriving junior section but are a little short on playing senior members. Seniors' Club Night is on Tuesdays, with open sessions most Sunday afternoons. We also play on Tuesday and Thursday mornings for those people who find the evening sessions inconvenient - we have some play facilities for young children. For the more competitive, we have teams in the Northumberland and Durham League - from juniors right up to veterans! We run a series of coaching sessions for both juniors and adults. For further details contact Membership Secretary, Foss Fairnell on 853544 or Club Secretary, Anne Francis on 852642.

*Correspondence relating to this Newsletter should be addressed to*

*D. Petrie, The Clerk to the Parish Council,  
8 Stephenson Terrace. (Tel: 852577)*

*Printed for Wylam Parish Council by  
The Gilpin Press, Houghton-le-Spring DH4 4BA.*