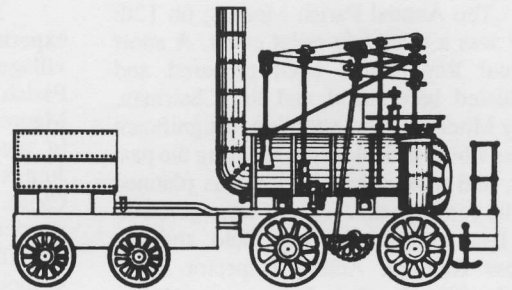


THE WYLAM GLOBE

Newsletter of Wylam Parish Council



Summer, 2004

Number 75

Summer Fair promises attractions for all

Only a few days to go now before the Summer Fair on Saturday, 26th June starting at 1.00 p.m. As usual there will be a great mixture of ever-popular favourites and several new attractions with something for everyone in the family.

Prudhoe Community Band together with musicians from Mityr Mory, Prudhoe's twin town, will provide plenty of

musical entertainment. Also starring on the main arena will be the Chart Toppers from Waterworld. Other attractions include Martin the Magician with his balloon sculpting and puppets, donkey rides and a bouncy castle. Among popular events will be the Fun Run, children's races, guide dogs and a fire engine.

There will be a good selection of commercial stands and stalls from many village organisations and charities.

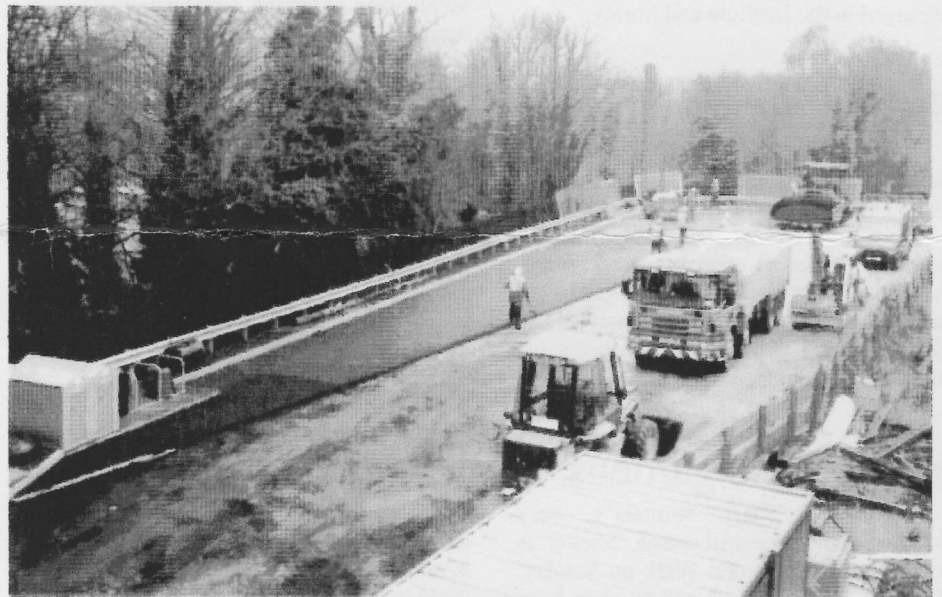
Admission is by programme and all profits from sales go towards running the Playing Field and improving facilities.

So please try and support the Fair - you'll enjoy it.

New Clerk Needed

Karen Webster, who has served the village well as Clerk to the Parish Council for the past four years is taking a break and the Parish Council is looking for someone to take on this part-time job. Hours are flexible but average about 48 hours per month, paid at national rates. Some keyboard, note taking and administrative skills needed. You could work from an office in the Institute or perhaps from your own home if more convenient.

If you are interested and would like more information, please contact Brian Japes, Chairman of the Parish Council on 852151 or Karen Webster on 852498.



Work in progress earlier this year on providing a tarmac surface for the station car park. The new fencing and crash barriers, together with the two cycle lockers and racks, can be seen on the left.

Older information?

The idea of producing a leaflet giving details of the activities and services available in the village for "older" residents was first suggested during the village plan consultation last year. Acting on this idea the Parish Council invited Lynne Petrie to compile information for this purpose and will shortly be producing an information card for residents in the 60+ (approx.) age group.

Unfortunately, the Parish Council does not have an accurate list of all households with an over 60 resident, so if a card is delivered to you by mistake (or you are not given one when you should be) we apologise. Copies will also be available from the library or the Parish Council/Institute for anyone (of whatever age) who would like one.

More books needed for mammoth stall

The annual second-hand bookstall held during the Summer Fair has mushroomed over the years and is now one of the largest of its type in the North East and helps to bring many people to the Fair who might not otherwise come.

Fresh stock is urgently needed this year, so please look through your cupboards and bookshelves and see if you can find some books which you no longer need. Books of all types, for children or adults, fiction or non-fiction, paperback or hardback will all be welcome.

Proceeds from the bookstall this year will go towards improving the Playing Field facilities and supporting the work of the local churches youth worker.

It would be most helpful if you could deliver any books to the Methodist Church Centre between 10.00 a.m. - 8.00 p.m. on any day from Monday, 21st - Friday, 25th June. If you cannot deliver them please contact Brian Japes (Tel 852151) or Philip Brooks (Tel 853520) who will be happy to collect them from you.

Don't forget to come and buy some books from the stall - it is an ideal opportunity to acquire a fresh selection of reading material at bargain prices.

Incidentally the bookstall will be open from 10.00 a.m. to 5.00 p.m. in the Methodist Church Centre.

Relatively quiet APM

The Annual Parish Meeting on 12th May was a relatively quiet event. A short Annual Report had been prepared and circulated beforehand and the Chairman, Tony Mitcham drew attention to significant issues which had taken place during the past year, and those where action was planned for the coming year. Reports were given on the Institute, the Playing Field and the Nature Reserve. Acting Inspector Steve Speak of Northumbria Police responded to various questions and comments about policing in the village and reassured residents that local crime levels are very low (but see item below on shed security).

Guard that shed

Of the local crimes this year many have been break-ins to sheds, leading to the theft of expensive mowers, cycles etc. To help make garden sheds more secure Northumbria Police are publicising the use of steel "Shed Bars". These can be purchased via the Parish Council. For more information see the notice and leaflets displayed in the Institute and library.

Station improvements

Thank you to Network Rail for the excellent improvement to the Station car park. This is the first time in its life that what was once the goods yard and coal depot and in recent years has been the car park, has ever had a proper level and tarmaced surface and strong fencing. The Parish Council will continue to press for improved lighting.

Enjoy those gardens

Following last summer's very pleasant and successful event, Shelter is holding another Garden Walk on Sunday, 27th June. Most gardens will be open from 10.30 a.m. to 5.00 p.m., but a couple will not open until 2.00 p.m. Tickets, price £3, are available from Dorothy Eavis (852188), Sharon Lamb (852688), Wendy Wright (852721) and from Stobos during shop opening hours.

Book the date and get a ticket now.

Set a good example

"We all try to encourage young people to look up to their elders and learn but I fear that many of the elders who live on or pass through Woodvale Gardens as pedestrians are encouraging exactly the opposite by repeatedly walking down the middle of the road. Please, before someone is injured, use the footpaths and leave the road for the vehicles."

A sincere plea from a local resident who has observed several near-accidents on Woodvale Gardens.

New Parish Councillors

Two residents with previous experience of the Parish Council and village organisations have been co-opted as Parish Councillors. Peter Clarke and Maureen Gillis are now joining the Council in place of Michael Gibbney and John Jours who have retired. Peter (28 Bluebell Close. Tel: 852297) is also the village tree warden and Maureen (27 Dene Road. Tel: 852503) served as Parish Clerk and later as a member and Chairman of the Parish Council in the 1980s and early 90s. Their experience and commitment will be welcome. We also thank Michael and John for the work they have done as Parish Councillors and hope that they will continue their active work for other local groups.

Please amend the details of Parish Councillors on your Village Information Card.

Overhead line removed

The decision by electricity supply company NEDL to replace the ugly overhead power line which ran along the riverside between the nurseries and Stephenson's Cottage, with an underground supply has been widely welcomed.

The new cable has been laid under the old waggonway track, and care was taken in excavating the cable trench to minimise damage to the old stone-sleeper blocks of the original 18th century waggonway, several of which survive below the existing track.

The removal of the ugly overhead line and poles is a definite improvement and should help to ensure a more reliable electricity supply.

150 years old

An invitation from the members of the Wylam Assembly; the observant among you will have noticed the year 1854 engraved into the stonework of the bell tower on the top of The Old Schools, Woodcroft Road, which makes the year 2004 its 150th anniversary!

To commemorate this auspicious event villagers are invited to pop into the old Schools anytime between 10.00 a.m. - 4.00 p.m. on Saturday, 11th September, to enjoy a cuppa and home-made scone before perusing a display of some old photographs relating to the history of the premises.

There is no charge so please feel free to come along and be part of our commemoration.

Bulbs brighten verges

The two areas of newly planted bulbs which flowered this spring - daffodils on Holeyn Hall Road, opposite the farm and crocuses on Station Road - have been much admired. The daffodils were planted by the Parish Council with help from village volunteers and the crocuses by Tynedale Council parks staff. More bulbs will be planted in the autumn - if you have ideas on suitable locations for them, please let the Parish Council know.

Friends of Wylam

This organisation has existed in the village for many years and our prime aim is to provide some social activity for retired people in our community. We have fortnightly coffee mornings on a Tuesday, several summer outings, a free Christmas lunch and an Autumn Bazaar - our sole money raising function.

To enable the friends to continue successfully we need more help and are looking for volunteers. We would welcome anyone with 2-3 hours to spare twice a month. If you feel you could help us, please contact our Secretary, Ursula Barker (Tel 852621). Thank you.

Joyce Howe,
Chairman of Friends of Wylam

Items in brief

At its Annual meeting the Parish Council elected Brian Japes as its Chairman for the year, in succession to Tony Mitcham who was thanked for his good work as Chairman for the past four years. Tony will now serve as Vice Chairman for the next year.

* * * *

The twin-bin kerbside refuse and recycling scheme seems to be working well with few complaints or problems arising from residents including "wrong" items amongst the recyclable materials in the grey bins. Glass bottles should not be included in your grey wheelie bins and should be taken to the new bottle banks in the War Memorial car park for recycling.

* * * *

Although wet weather on 20th March prevented the normal arrangements for the village litter pick, several of the young people's organisations agreed to clear areas of the village on subsequent days. Thank you to everyone who took part, either on 20th or subsequently, and also to those who regularly pick up litter on their walks around the village, helping to keep things reasonably tidy.

* * * *

Following the work carried out last year to the Falcon Centre further improvements have continued with the resurfacing of part of the top yard to make a safer area for use by the Playgroup, and the replacement of the few elderly rose bushes, with an attractive selection of flowering shrubs.

* * * *

Age Concern are still looking for local volunteers to help them to restart the Day Centre at Blakett Court which has been much appreciated by older residents in previous years.

If you might be willing to help, even if for just an hour or two each week, please contact Anne Shilton (Volunteer Development Officer) at Age Concern Northumberland (Tel: (01670) 528220) for more information.

Correspondence relating to this Newsletter should be addressed to

*The Clerk to the Parish Council,
Wylam Institute, Church Road, Wylam NE41 8AP.
Printed for Wylam Parish Council by
The Gilpin Press, Houghton-le-Spring DH4 4BA.*



ANNUAL PARISH MEETING

WEDNESDAY 12th MAY 2004

7.30 p.m.

WYLAM INSTITUTE

ANNUAL REPORT

With apologies to those who are aware of who and what the Parish Council is and does I have structured this year's annual report around the way the Parish Council spends its income, which is largely raised as a precept included in the Council Tax from Tynedale Council. The Council's main aim is to work towards improving the environment and quality of life of residents in the parish by working with them and other agencies that have an influence on life in the village. Members have agreed to seek "Quality Parish Council" status to promote this objective.

What is the Parish Council?

Wylam Parish Council has 8 members who are elected every 4 years. The current Council was appointed in May 2003 when it was deemed that, as there was exactly the same number of candidates as there were vacancies, an election was unnecessary. The Council consists of Councillors Tony Mitcham (Chairman), Brian Japes (Vice Chairman), Philip Brooks (also a Tynedale District Councillor), Michael Gibbney, John Joures, Jane Kevan, Jeff Leetham, and Bob Whinham.

The Council employs one officer, the Clerk to the Parish Council, who is responsible for administration, financial matters and advising the Council. Regrettably, after four years service Karen Webster Clerk to the Council has resigned, so the Council is urgently seeking a replacement.

What does Wylam Parish Council do?

The Parish Council is the tier of local government that is closest to the community. It works with Northumberland County, and Tynedale District Councils in delivering services to residents. The Parish Council is financed largely through a parish precept that is raised along with the Council Tax. Currently the precept for Wylam is £24,100 and will be £25,000 in 2004/05. Additional income is achieved through specific grants. Last year £5,000 was provided by the Countryside Agency to enable the Village Plan to be prepared.

How the Council's budget is spent is described below. Expenditure for 03/04 shown in (£).

Joint Burial Board - in partnership with Horsley, Ovingham, and Ovington Parish Councils the Council operates the cemetery at Ovingham. (£2,650)

Environment - the Nature Reserve and allotments, as well as a number of other pieces of land along the river bank and around the village are owned and maintained by the Council. The Council successfully achieved official status for the nature reserve this year with advice from the Countryside Agency and English Nature. The Council also provides various benches, the play area at Hagg Bank, flower baskets, beds, & tubs and notice boards. The Council has a grass-cutting contract with Tynedale Council. The Village Handyman, employed by the Parish Council, Councillors and volunteers undertake other tasks. Funds are also put aside for replacing play equipment. (£5,080) The Council also comments to Tynedale on planning applications and draws the attention of neighbouring residents to any application that may affect them.

Museum - the Council maintains the Railway Museum in the Falcon Centre. Currently models of "Wylam Dilly" and "Puffing Billy" are being built for display with the help of a legacy provided for that purpose.

Information - the Council publishes the "Wylam Globe" newsletter and Information Cards. The Council has been working with Wylam Institute Computers and ran a successful campaign in the autumn to get Broadband to Wylam. This should be available by the end of July 2004. The Council proposes to assist in the development of a Wylam Community Website. (£860)

Grants and Donations - the Council contributes to the costs of running the Institute, the Jubilee Playing Field and the Youth Club in the Falcon Centre. (£5,840)

The Council subscribes or makes donations to organisations that are considered to benefit the village including CPRE, Community Council of Northumberland, village sports clubs and youth organisations. (£1,400)

The Village Plan - this has been a very successful project involving the whole village. The Parish Plan Report, which was distributed last summer, has been a great success (£1,200 plus grant of £5,000). The Council has set up a number of Working Groups to carry some of the ideas forward. Reports from the Conveners of the groups follow:

Environment

The group has been looking at issues raised in the Village Plan consultation which concerned such matters as refuse collection, recycling, litter, dog fouling, public toilets open space, tree planting and the Country Park. Improvements have been made to the public toilets and an additional litter bin and dog waste bin have been provided on the walkway. New bins for glass recycling have also been installed in the car park. More flower bulbs were planted in the autumn and have flowered well in recent weeks. Several more improvements are being planned for the next year.

Public Transport

The public transport group has reviewed the provision of public transport in the village and endorses the main findings of the Village Plan for the improvement of afternoon and evening bus services to Prudhoe and late rail services. The Council's lobbying for the improvement of the station car park have met with success with Network Rail carrying out the work earlier this year.

Highways

The group has had four meetings, including with officers of the County Council responsible for Road Safety and Highway Maintenance. The Group now has an understanding of the County priorities and how work is allocated. Issues being discussed include road safety, speeding, through traffic and parking. The group is preparing a table of highway faults and priorities for repair. A list of suggested sites for dropped kerbs in the village is being completed. As the Convener of the Public Transport is resigning from the Council the group is being amalgamated with Highways.

Part of the work of the Council is developing links with other organisations so that Wylam's interests can be represented. As well as occasional meetings with Tynedale and Northumberland officers, including the Countryside Department, the Council has sent representatives to meetings of the East Tynedale and West Castle Morpeth Forum (of Parish Councils), Crawcrook Quarry Liaison Group, and Newcastle Airport Local Consultation Group.

The Council will be contributing to the costs of the Wylam and District Churches in employing a part time youth worker this year.

The coming year

The first priority will to appoint a new Clerk. There will be a need to install the new models in the museum. It is possible that a planning application may be submitted for the Wylam Hills farm site, the deteriorating appearance of which has been causing concern in the village. The Council will continue to move the recommendations of the Village Plan forward and continue to take advantage of any grant or other opportunities to benefit the village.

Tony Mitcham
Chairman