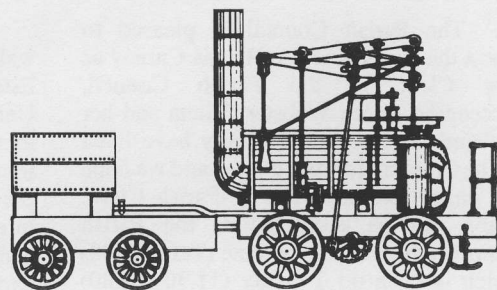


# THE WYLAM GLOBE

Newsletter of Wylam Parish Council



November, 2004

A Happy Christmas to all our readers

Number 76

## Appeal for more donations to continue work

Everyone in the village will now be aware that Wylam has its own Restoration Project. Work on the rear of the Institute is proceeding well. However when the scaffolding was erected it was discovered that the work required on the top of the gable end was more extensive than originally thought. This has resulted in increased costs which realistically will probably apply to other areas when a closer inspection can be carried out. At present day costs the total will be nearer £40,000 than the £36,000 originally quoted and if the work cannot be finished within a reasonable period, then again, costs will increase.

Fund-raising is continuing and will continue to do so. Offers of help have been received from the Parish, District and County Councils, The Joicey Trust, The C. J. W. Blackett Village Trust and the Joseph Brough Charitable Trust and the Institute has contributed £3,000 from its own funds.

Many village residents have been very generous in response to the letter sent to every household. This figure to date is in excess of £5,000. Offers of assistance with fund-raising have come from John and Angela Craven at the Wine Lodge and Wylam Nurseries and donations have been received from Stuart Ramage of Freedom Flights (Newcastle) Ltd and Wylam Assembly. Sincere thanks go to all these residents, local businesses and organisations.

The total amount donated or promised so far is a gratifying £20,900 which means that the work required to the front of the building should be able to start some time in the New Year. However we are obviously still far short of the money needed to complete the work and are

### Geordie is the tops!

The results of a recent county-wide survey carried out by the County Council to discover who is the most famous Northumberland resident (past or present) - Wylam's own pioneer - George Stephenson was voted top!

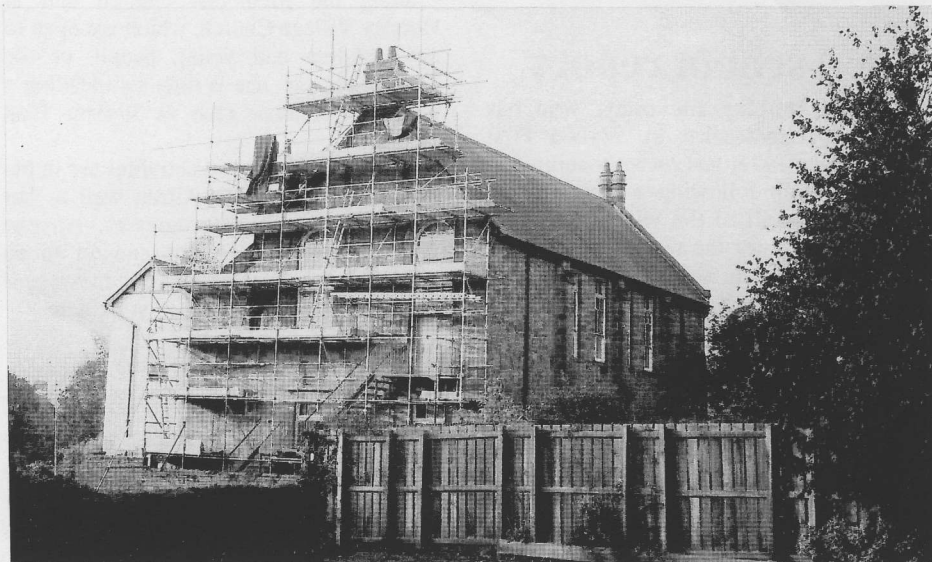
presently in contact with other funding organisations and businesses further afield in an effort to raise more cash. This is proving to be increasingly difficult as time goes by.

If there are those of you in the community who would like to make a donation and have not yet done so, then any amount would be gratefully received.

Either contact Sue Nicholson on 853315 or Karen Webster at the Institute on 852498. If you would be willing to complete a Gift Aid form then this increases the value of your donation at no cost. Gift Aid forms are available on request from the Institute office.

Once more thank you to everyone who has helped us so far.

SUE NICHOLSON



Work on repairing the stonework on the back wall of the Institute has been in progress for several weeks. It is hoped to be able to start on the front gable in the New Year but more funds will need to be raised before this essential work can be completed.

## Fancy a trip to Wylam's own cinema

No, you don't have to trail into Newcastle or the Metro Centre. The cinema has arrived in Wylam and is showing good quality films!

Once a month you can come to the Village Institute and watch a film with your friends and neighbours. The film club has been started by a group of enthusiasts in conjunction with Queens Hall Arts Centre, to bring films to rural communities.

We show a variety of films, new and classics, different genres and our members are involved in choosing. Membership is free and the cost of entrance is just £2.50.

Titles and dates of the next three films are given in the Village Diary elsewhere in this newsletter, but look out for posters with more details of forthcoming attractions, or call 852626 if you would like to be more involved.

## Bells and chimes back

Many people have been pleased to hear the sounds of the church bells once again, together with the chimes of the church clock. In January the Bishop of Newcastle is coming to Wylam to help the village celebrate the return of these sounds.

## New Parish Clerk

The Parish Council is pleased to report the appointment of Diana Carney as new Clerk to the Parish Council, succeeding Karen Webster. Diana and her husband John and their family have lived on the Crescent for many years and we hope she enjoys her new job as Parish Clerk. Diana can be contacted at the Parish Council Office in the Institute (Tel 852498) which is open on Tuesday (11.30 - 4.30) and Thursday (12.30 - 4.30).

## Info card for "oldies"

As mentioned in the last issue an Information Card giving information likely to be of particular interest to "older" residents has been produced by the Parish Council. It had been intended to target the distribution of these Information Cards to households with one or more "older" residents, but these proved difficult to identify and copies are now being delivered to all households in the village with this newsletter. If you receive a copy and do not want it, please return it to the letterbox in the Institute.

## Good school report

Mrs. Dorothy McSorley, who has served as Headteacher at Wylam First School since 1996, has recently submitted her resignation following a period of ill health. On behalf of the village we thank Mrs. McSorley for the work she has done on behalf of the school in this very important and demanding job. We wish her well in her retirement.

Mrs. Hazel Holliday has been acting Headteacher over recent months during which the school has achieved an excellent report following the Ofsted inspection.

Congratulations to everyone associated with the school on this splendid result.

A new Headteacher is due to be appointed shortly.

## Village Diary

### NOVEMBER

20th. Film: "Lost in Translation". 7.00 p.m. in the Institute.

### DECEMBER

11th. Film: "Buena Vista Social Club". 7.00 p.m. in Institute.

15th. Friends of Wylam Christmas Lunch, Institute.

19th. Village Carol Service - Methodist Church, 6.30 p.m.

### JANUARY

15th. Playing Field Association Jumble Sale.

22nd. Burns Night Ceilidh - Institute.

29th. Film: "Twelve Angry Men", 7.00 p.m. in Institute.

## Close House paths

Local residents who have been able to walk fairly freely across the Close House Estate whilst it has been owned by the University of Newcastle, will have noticed increased security measures have been introduced by the new owners. Action has previously been taken by the Parish Council in association with several residents to try and ensure that existing public rights of way through the estate are registered with the County Council and protected.

## Keen youth worker

Many by now will have met or at least heard of Aileen Johnson, the part-time Youth Worker employed for the past ten months by Wylam and District Churches.

Aileen, who lives in Rowlands Gill, is an experienced and very well qualified Christian Youth Worker and her involvement in this summer's Holiday Club, the 'Expedition Force', was an opportunity for many children and their parents to meet her and to see something of her work and enthusiasm.

In addition to activities at St. Oswin's Church, the Methodist Church and at Horsley Village Church, which are open to any children and young people of the appropriate age, she is now also leading a weekly lunchtime club at Wylam First School.

Further ideas and activities are in the pipeline and we wish Aileen well as her work in the village progresses. Anyone wishing to contact Aileen can do so on 853075, where you may leave a message if she is not in the office when you phone.

## Vacancy for a youngster

An opportunity has arisen for someone new to join the Parish Council and take an active part in helping to maintain and improve the village. Ideally we would like someone in the under 50 age group - to reduce the average age of Parish Councillors!

Anyone interested (of whatever age - and either sex!) is asked to contact Diana Carney, the Parish Clerk, the Institute, Church Road (Tel/Fax 852498, e.mail: wylampc@btinternet.com).

## Needlework or Tapestry

Anyone interested in needlework is invited to come to the Methodist Hall (upstairs room) on any Wednesday at 2.00 p.m. where members of the Needlework group meet. We are a self-help group doing various forms of needlework including blockwork, cross stitch, crewel work, tapestry and patchwork.

We would welcome anyone, beginners or experts, with a view to joining our group (if you would like more information please phone 853276).

## Items in brief . . .

Friends of Wylam would like to say a big thank you to all who supported their Autumn Bazaar on 14th September with donations, help, contributions and in any other way. The combined effort and generosity raised £541.

\* \* \* \*

Several residents have enquired why new fencing and gates have been erected - subdividing the top playground behind the Falcon Centre. This has been done to create a safe enclosed play area for the pre-school age children who regularly use the Falcon Centre premises.

\* \* \* \*

This year the floral displays around the village seem to have lasted longer than ever despite being battered by the weather. Thanks to everyone who has supplied, tended and watered them. More bulbs and trees are being planted which should enhance the display next year.

\* \* \* \*

Looking for distinctive gifts for Christmas? Then two of Wylam's talented, artistic ladies might be able to help. Why not contact Debbie Conley (who achieved wide publicity at the recent opening of the Newcastle Airport extension) produces special tiles, name plates etc., at her craft workshop on West View, or, Tina Hartas who is now concentrating on a career using her artistic skills. She has a small gallery at her home (the Toll House) which people may visit by appointment (Tel 852969).

\* \* \* \*

Volunteers are still needed to help to re-open the Blakett Court Day Centre - only one day per month. Contact Ann Shilton 01670 528220.

\* \* \* \*

Now a member of the Parish Council Peter Clarke will continue to serve as Village Tree Warden and to manage the nature reserve. More trees are to be planted to consolidate the river bank where erosion has taken place. Several trees are to be planted to commemorate the lives of some residents and the arrival of new babies. Some people just want to plant trees! Peter can be contacted at home (852297) or through the Parish Council Office in the Institute.

\* \* \* \*

New rules about access to the countryside have already started in some areas and will apply to most of Northumberland and Durham from May 2005. At that time new O.S. Explorer maps will be published showing the areas being opened up to walkers.

Correspondence relating to this Newsletter should be addressed to

The Clerk to the Parish Council,  
Wylam Institute, Church Road, Wylam NE41 8AP.  
Printed for Wylam Parish Council by  
The Gilpin Press, Houghton-le-Spring DH4 4BA.