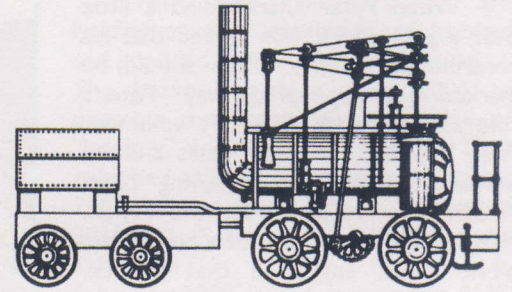


THE WYLAM GLOBE

Newsletter of Wylam Parish Council



Spring 2012

No. 103/4

Village Road Safety

There are, quite understandably, very few issues that “get people going” more than road safety throughout the village. For this reason the Parish Council is in frequent contact with the County Council or Police when specific issues are raised. Recently these related to concerns expressed by several parents, particularly of children attending Ovingham Middle School, who are concerned about children crossing the main road near the War Memorial to catch their school bus.

An officer from the County Council’s Highway Design Team made visits to the site to observe the situation. His report concluded that there were no undue dangers and he complimented the children in the road sense they showed, noting that some crossed at a point closer to the bridge where visibility is better. There were, he observed, adequate gaps in the traffic for children to cross safely and added that none of the children were supervised by an adult.

However, we take this opportunity to comment on an unrelated but worrying observation that a small minority of children have been seen playing with a football while waiting for the Middle School bus opposite Wylam Hills Farm, with the ball rolling in front of traffic on more than one occasion. We would encourage parents who are aware of their child taking a ball to school, to emphasise the dangers that this can lead to.

A separate safety issue, relating primarily to the danger experienced by drivers joining the main road at the “Fox and Hounds”, has been raised by a local resident with both the County and Parish Councils. As we reported in the autumn 2011 issue of “The Globe”, Parish Councillors have already held discussions with a County Council officer on this issue and a site visit included this location. However, this officer has given further consideration to these issues in the light of the latest

approach, but has confirmed what we reported previously, which is that suggestions, including traffic lights, a mini-roundabout and a mirror on the opposite side of the junction, are all non-starters for various reasons. Further, a request for a 20mph speed limit on the road through the village has been turned down on the basis that a limit of this nature is not permitted on a through road unless it is outside a school.



Raid on the Post Office

As preparations for this issue were getting under way the whole Wylam community was shocked and appalled by news of the attack on Fred and Rosa Voase at the Post Office and the associated robbery.

The Parish Council and the whole village, we are sure, can only express the sincere hope that this terrible ordeal is something that Fred and Rosa will be able to put behind them and that the perpetrators of this crime will be caught quickly.

We have been asked to include the following note:- “Rosa and Fred Voase, and their family, would like to extend their sincere thanks to everyone in Wylam and district for the many expressions of love and support that were received during the course of the terrible

events at the Post Office in February. We are in our 25th year in Wylam Post Office and do not wish these recent events to mar the wonderful times we have enjoyed here”

We possibly tend to think that this sort of thing only happens to other people and in other places but we are aware that there have been other less serious and more opportunist robberies in Wylam in recent months, and if we are to learn anything from these experiences it must surely be that we must all be constantly vigilant and careful at all times.

New Parish Councillor

We are pleased to report that Tom Appleby has recently been co-opted by the Parish Council to succeed Caroline Shepherd, whose resignation we reported in our last issue.

Tom is already widely known in the village, having lived here all his life and through having represented Wylam on the former Tynedale District Council for a time, until its demise in 2009.

We trust that Tom will enjoy his new responsibilities.

This is perhaps a good opportunity to remind everyone that the next elections to both Northumberland County Council and Wylam Parish Council are due to take place in May 2013. It is hoped that many more people will be putting their names forward when that time comes along. Do please think about it. This will be a great opportunity to get involved, and several existing members are likely to be retiring!

A Tree for Peter

When Peter Clarke died a little over a year ago it was agreed that his contribution to the village should be marked in an appropriate way. Peter's role as the Parish Council's volunteer Tree Warden for many years and his outstanding work in achieving Local Nature Reserve status for the Wylam Haughs site, not to mention his tireless work there, suggested that a tree, planted in his memory, would be the most appropriate way by which to remember him.

A Himalayan Birch (*Betula utilis jacquemontii*) has been purchased and this will be planted within the area of Charlie's Corner (opposite Wylam Institute) on Saturday 31 March at 10.00am.

We do hope that as many as possible will come along to witness this event and possibly enjoy a cup of coffee at the Methodist Church Centre afterwards.

Diamond Jubilee Celebration

A village celebration is planned to mark the Queen's Diamond Jubilee, and we trust this will receive widespread support. The event will primarily take place, appropriately it is felt, on the Jubilee Playing Field, on Saturday 2 June between 12.30 and 3.30pm.

There will be a procession, probably involving some very special headgear, we understand. This will be followed by a family picnic on the Playing Field and games. Several village organisations have already agreed to take part.

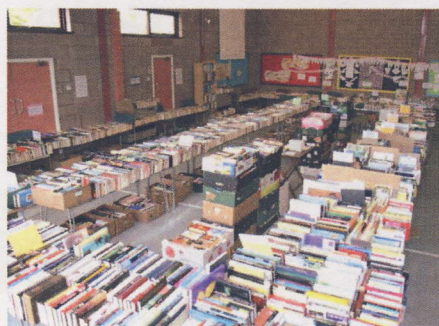
Please make a note of the date. Further details will be widely advertised and circulated nearer the time and we hope that as many as possible will wish to take part. Why not come along to the next planning meeting at Wylam Institute, at 2.00pm on Thursday 22 March?

Sorry About the Lights, and More!

We reported in the last issue that the Parish Council had extended the Christmas lights on the trees in the Institute Garden. Unfortunately, a few days before Christmas, gales caused a fault that electricians were unable to repair until January and this put all the lights out of action. We hope that they will perform better next year!

Another victim of the weather, for the second year in a row, was the Carols and Santa visit to Charlie's Corner. This time it was too icy for the children to safely come up from the school. Santa has promised to eat the sweeties himself and will have some fresh ones next year.

Bookstall - the End of an Era!



A bookstall has been held as part of Wylam Summer Fair in June for more than 30 years and for the past 14 years it has been held in the hall of the Wylam Methodist Church Centre, which has enabled it to grow to what is said to be the biggest one-day bookstall in the north of England.

To some extent, the scale has contributed to it becoming a victim of its own success and the organisers have indicated that 2012 will be the final effort. It now takes several people about 10 days to set up and then pack away, which is heavy work and not easy for those involved, who are not getting any younger! At the same time, anticipated building work and an urgent need for more storage space at the Methodist Church, have contributed to this decision.

Because of the generous support of local people, the volume of books sold is usually only a little greater than that of books donated each year and with the usual appeal this year it might be assumed that a lot of books will still remain. Enquiries are currently being made about the possibility of selling the remaining stock, to ensure that the Wylam Playing Field Association and Wylam and District Churches Youth and Children's Work, the charities which currently share the proceeds, can benefit. The plan this year is to carry the bookstall on into the Sunday afternoon and the Monday following the Summer Fair, in order to maximise sales. However, if you would be interested in taking perhaps a limited proportion of the stock on the Tuesday, (bearing in mind there are likely to be something like 250 to 300 boxes in total), to set up a charity stall, perhaps back on the Playing Field where it all began, please contact Brian Japes on 852151.

Fancy a Challenge?

Wylam Women's Institute is challenging us all to join them on Saturday 21 July from 2.00 to 4.00pm in Wylam Institute and the Institute Garden for the "WYLIMPICS"!

This will be an afternoon of family fun, with silly sports that somehow got left out of the real thing, including the "East Tynedale Shove Ha'Penny Championship". Refreshments will be available throughout the event. Make a note of the date.



Residents' Festival

Northumberland County Council has organised a "Residents' Festival" which will take place over the weekend of Saturday and Sunday 24 and 25 March.

Throughout the weekend, local residents will be able to enjoy free or discounted entry to many of the attractions across the county, including castles, gardens, stately homes and museums.

The event aims to give something back to people living in the county and comes at a time when money is tight for many.

Special vouchers will be needed to obtain the free or discounted entry and these are currently available from libraries, council offices, tourist information centres and sports centres. For further information you can log on to [http://](http://residentsfestival.northumberland.gov.uk)

residentsfestival.northumberland.gov.uk or telephone 0845 600 6400.

Village Litter Pick

We hope this issue will be circulated before the litter pick, in which case we hope that as many as possible will be prepared to help on Saturday 24 March, when the Parish Council have once again arranged to hold a wide "sweep" of as much of the village as numbers will permit, in order to tidy up areas where litter has accumulated.

Please come to the Country Park Car Park ("Old Station Yard") for 10.00am or as soon as possible afterwards. We recommend old clothes and strong footwear or "wellies". Basic equipment, essentially gloves and bags, will be provided and, as usual, the Parish Council will make a small contribution to village organisations that volunteers choose to nominate, as long as that organisation operates a bank account.

Please remember that health and safety is paramount. More advice will be provided on the day but, in particular, all children must be supervised very closely by adults.



Wylam Community Orchard "Blossom Day Picnic"

Members of the Wylam Community Orchard invite everyone to join them at the Orchard, located at the First School on Bell Road, on Saturday 21 April at any time between 1.00 and 3.00pm. Bring a flask and some "sarnies" and they promise not to make you work, unless you wish to! Just come and enjoy the peaceful surroundings, have a look at what has been achieved so far and hear about future plans.



Wylam Playing Field Association

2012 has already proved busy for the Playing Field Association, with three fundraising events taking place.

The New Year's Eve Party was eventually a "sell out", being well attended by young and old. The evening involved a lot of hard work for committee members but it was enjoyed by everyone and the profit exceeded £1,000.

The traditional Burns Night Ceilidh attracted fewer people than in previous years but those who attended commented on the quality of the food, service and décor. The reduced number actually made the dance floor more accessible and reduced the risk of bruised toes and ankle injuries!

It proved to be a "bumper" year for the Jumble Sale, with a queue stretching to the main road by the time the sale opened. There was good support from the village sporting teams and others, all of which contributed to approximately £1,400 being made on the day.

Plans are well under way, working with Pennine Playgrounds, to refurbish the playground on the field and it is intended to install several new pieces of equipment that it is hoped will be attractive to a range of ages.

Unfortunately the Association has already had to replace guttering which has been stolen from the new pavilion extension. The small planters outside the pavilion have also been mindlessly destroyed and the large planters up-ended with resulting damage to the plants.

Applications for stalls for the Summer Fair on 23 June have been arriving on a daily basis, so there's still no rest!

As ever, the committee wish to thank all those in the village who support the activities and request that people continue to offer help in any way they can.

An Invitation to a Northumbrian Evening

This event will be held on Friday 16 March, 7.00 for 7.30pm in Wylam Institute, when entertainment is to be provided by Ernie Coe and Guests.

Admission is by ticket costing £10, which includes supper. There will be a licensed bar.

Proceeds are for St Oswin's Church Building Fund and tickets can be obtained from Michael Gibbney; Tel 853898 or at

michael_gibbney@hotmail.com

St Oswin's Church Annual Coach Tour

Local people are invited to join with friends from St Oswin's Church on a coach tour taking place on Friday and Saturday, 3 and 4 August.

The coach operator will be Tynedale Group Travel, departing Wylam for Harrogate where there will be time for lunch before travel to the four star Hilton Sheffield for an overnight stay. On Saturday the group moves on to Buxton, with a coffee break in Bakewell on the way. Lunch is included at the Palace Hotel before attending the matinee performance of "The Gondoliers" at the Buxton Opera House before returning to Wylam.

The price is £165 per person based on two sharing. Further enquiries and booking can be made to Michael Gibbney, tel 853898 or at michael_gibbney@hotmail.com

Railway Museum



The Parish Council will shortly be looking for a volunteer or volunteers, interested in railways and local history, who would be willing to help look after the Village Railway Museum in the Falcon Centre.

Anyone who thinks they might be interested is asked to contact the Parish Council Office (Tel: 852498)

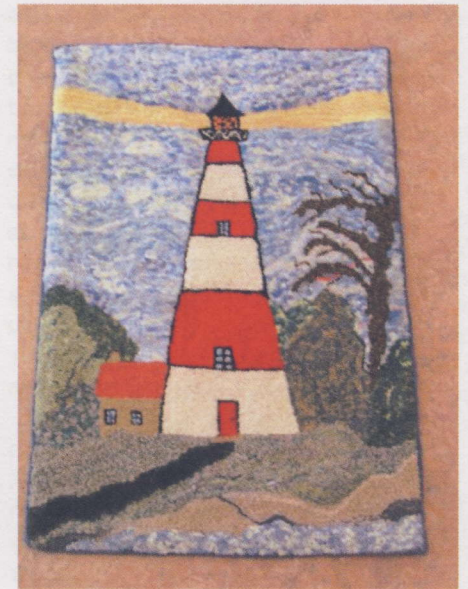
Drama Production



Wylam Amateur Dramatic Society's next production, with performances from Thursday 26 April to Saturday 28 April in Wylam Institute, will be "Ladies in Retirement", a spooky Victorian thriller. This will be its third appearance in Wylam! Sue Nicholson will reprise her role as Ellen, and Pat Buckle will have starred in each production, in 1962 as the maid, 1990 as Leonora, and this time as a batty sister. There will also be two newcomers making their debut, Catherine Gardiner as the flirty maid, and Richard Roberts as the only male in the cast.

An Exhibition of Mats

The Tyne Valley Matters are holding another exhibition of hooked and prodded mats in Wylam Institute. The group was formed in 2005 to promote and keep alive the skill of "hookey" and "proddy" matting. They exhibited at Beamish Museum in August 2007 and more recently, in September 2010, in Seaton Delaval Hall. An exhibition in Wylam Institute in February 2008 raised money for RUG AID, a charity set up to help blind and deaf adults and children in Gambia.



'The Lighthouse' by Maggie Bullock

This year's exhibition is on Saturday 31 March, in Wylam Institute from 10.00am until 4.00pm. Tickets are £5 (including refreshments) obtainable in advance from Margaret Mitcham Tel. 852128 or at the door on the day. The proceeds from the exhibition will be in aid of AZURE, a local charity which runs a very successful programme providing accommodation and support for independent living for people with learning difficulties.

The group are hoping that as many as possible will come along and see what they can turn our cast off sweaters and cardigans into! As this picture illustrates, a varied and colourful exhibition is promised.

Hedges and Trees

This is the time of year when it may be worth reminding everyone that if we permit our hedges or trees to overhang pavements or footpaths, it is not only an offence but it can be dangerous, particularly when it is dark or to those with poorer sight. Please check outside your own property on a regular basis and keep things cut back!

News from Stanley Burn

Richard Shirbon, Manager of the Stanley Burn Care Centre writes:-

"Yoga for elders! We have started having Yoga sessions here at Stanley Burn, which are delivered with the focus on fun. The sessions include leg raises, foot movements, hand and arm exercise and even time for a song or two. Yoga is known to be one of the best techniques for massaging muscles and internal organs, a key factor in a healthy and strong person. Apart from this, Yoga also helps to improve the oxygenation of the blood. This translates not only into increased physical strength but into a sharp and focused memory and an increased attention span. There is much research which suggests that improving balance and stability through Yoga could help reduce the risk of falling, as these are two areas that are often deficient when a fall occurs. We are currently holding a Yoga class twice each month and, if you wish to come and take part with your relative or friend at Stanley Burn, please give us a call (853298).

We celebrated 'Dignity Action Day' at Stanley Burn on 1 February, when we held awareness training which reflected on the challenges faced by people who suffer dementia, sensory loss, and the general frailty of old age. The day included a presentation on using books as a communication tool. There was a presentation on the "Pictures to Share" books, which showed the challenges that people face and how we may support people more effectively. We enjoyed cup cakes with purple icing, purple balloons and a balloon release that afternoon with personal quotes attached to each balloon about the client's feelings around dignity".

Tree Trimming

Within the coming weeks we have been advised that contractors working on behalf of Northern Power Grid will be carrying out trimming of trees growing close to overhead power lines in various places around the village. Some of this work will be on land owned by the Parish Council and you may have been approached separately where your own trees are involved.

At the same time, on behalf of Network Rail, some tree felling and further trimming is to be carried out in locations close to the railway track.

Although this type of action always concerns or even offends some people, we have to recognise that the primary need is for safety in both situations.

Parish Council Budget 2012-13

At the January meeting of the Parish Council, members agreed the Budget for the next financial year. Aware of the financial constraints affecting many people but still wishing to progress a number of on-going and a limited number of new projects, the Council is pleased to report that the overall precept has been set at £36,500, just £500 more than for the current financial year, an increase of less than £1 per household for the year.

Savings have been made in a few areas but we have had to start putting some money aside to cover County and Parish Council Election Costs in 2013. The cost of on-going maintenance work on several Parish Council-owned assets continues to rise and money has been allocated to allow the preparation of a Neighbourhood Plan, which is a requirement under the Localism Act. We are hoping that money from a contingency element of the budget will enable the Parish Council to appropriately support the marking of the Queen's Diamond Jubilee. Further improvements to the Christmas lights are also planned, including the possible installation of an underground cable to improve safety.

Footpath Problems

The Parish Council has been aware for some time of the deteriorating condition of the very popular path, shown in the photograph here, which runs along the riverside, from the east end of Stephenson Terrace. Erosion has occurred, leaving what can become a particularly dangerous surface in wet conditions.



Tim Fish, the County Council's Footpath Officer for this area, is currently preparing plans to repair this path but we understand that action will have to await the availability of money.

Forthcoming Events

The following events will take place in Wylam Institute, unless indicated otherwise.

Other events, possibly with more detail, can be seen in the Diary Section of the Parish Council's website:-

www.wylamparishcouncil.org

Fri 16 March

St Oswin's Northumbrian Evening 7.00pm

Sat 17 March

Cancer Research Spring Fair 10.00am to 12 noon

Film Club "Senna" 7.30pm

Thurs 22 March

Queen's Diamond Jubilee Planning Meeting 2.00pm

Fri 23 March

Cricket Club Quiz 7.30pm

Sat 24 March

Annual Village Litter Pick. Throughout village, from 10.00am

Sat 31 March

Tyne Valley Matters Exhibition 10.00am to 4.00pm
Memorial Tree Planting for Peter Clarke, Charlie's Corner, 10.00am

Wed 11 April

Institute Coffee Morning 10.30am to 12 noon

Mon 16 April

Parish Council 7.00pm

Sat 21 April

Film Club "Animal Kingdom" 7.30pm

Thurs 26 to Sat 28 April

Drama Society "Ladies in Retirement" 7.30pm

Mon 30 April

Blood Donor Session

Wed 9 May

Institute Coffee Morning 10.30am to 12 noon
Annual Village Meeting 7.30pm

Mon 14 May

Institute AGM 6.30pm
Parish Council 7.00pm

Sat 19 May

School Jumble Sale 2.00 to 4.00pm
Film Club "Win Win" 7.30pm

Sat 26 May

Gardeners Spring Coffee Morning 10.00am to 12 noon

Sun 27 May

"Jump for Joy" St Oswin's Hall and Grounds from 12 noon

Sat 2 June

Queen's Diamond Jubilee Party on the Playing Field

Wed 13 June Institute Coffee Morning

10.30am to 12 noon

Fri/Sat 15 & 16 June

JEMMS Summer Production 7.30pm

Sat 23 June

Wylam Summer Fair and Bookstall

Sun 1 July

Shelter Strawberry Fair

Sat 7 July

Drama Society. One Act Play and Buffet Supper, 7.00pm

Wed 13 July

Institute Coffee Morning 10.30am to 12 noon

Deadline for material for the next "Wylam Globe" Monday 14th May, 2012

Correspondence relating to this Newsletter should be addressed to:

Mrs. D. Carney,

The Clerk to the Parish Council
Wylam Institute, Church Road,
Wylam NE41 8AP

Tel: (01661) 852498

[e.mail: wylampc@btinternet.com](mailto:wylampc@btinternet.com)

Printed for Wylam Parish Council by the Gilpin Press, Houghton-le-Spring DH4 4BA.
E.mail gilpin.press@btconnect.com