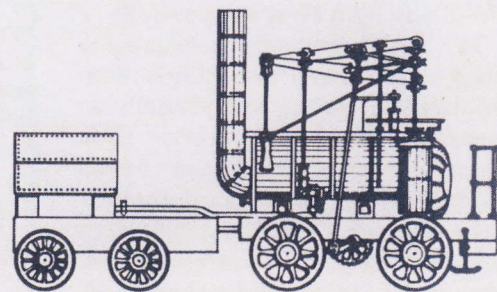


THE WYLAM GLOBE

Newsletter of Wylam Parish Council



Winter 2012

No. 107

Car Park Charges, Success at Last!

Northumberland County Council lifted charges from the Country Park Car Park, near the War Memorial, initially for a trial period ending on 30 September.

In October the County Council asked for the Parish Council's views on the effects of this trial which, quite clearly, had seen an increase in the use of the car park and less of the nearby on-street parking which has annoyed local residents for so long.

Naturally we were even more delighted when news came that charges were to be lifted permanently and that the ticket machine and associated pay and display notice would shortly be removed.

This has hopefully brought an end to one of Wylam Parish Council's longest running campaigns and although a process of educating visitors to the fact that the car park is free will need to continue, we believe the decision to be

wholly justified and certainly very welcome.

This decision also includes the Country Park Car Park at Low Prudhoe.



Bell Ringing St Oswin's Church

Bob Doughty writes: "The bells in the tower of St Oswin's are one of the finest peals of bells in the area. They are rung each Sunday prior to the service and are a key part of the ceremony for many of the weddings at the church.

Sadly, in recent years, the number of people able to ring the bells has been steadily decreasing while at the same time the age of the current ringers is steadily increasing.

It is now apparent that unless new volunteers come forward, the tradition of bell ringing at St Oswin's will soon cease. Already, on certain Sundays there have been insufficient ringers.

There is a welcome at St Oswin's bell tower for anyone who would be interested in training to be a bell ringer or anyone who has rung previously. Learning to be a bell ringer does take time and application but the end result is well worth the training. Informal practices take place on Monday evenings.

In the near future a number of open days will be held when anyone interested can come and see what bell ringing is all about. Please contact the Tower Captain, Bob Doughty on 853398 if you are interested in coming along to an open day, or for any other information about bell ringing in Wylam. It cannot be stressed too strongly that we need to see some new bell ringers (learners or with experience) joining us in the tower, otherwise the end of bell ringing at Wylam is a very real possibility".

Wylam Post Office

Although many of you will know by now, we are delighted to report that local man Steve Loveday has recently been appointed as the new Sub-Postmaster at Wylam and consequently tenant of the Parish Council. Following a period of training, he finally took over his new position in late November.

Steve has become well known in the village over recent years for his taxi service, a job that has been widely appreciated and which earned him considerable respect amongst his many customers. We understand that this business is continuing under new ownership.

We offer our best wishes to Steve and trust that people will support not only the Post Office services but the range of cards, stationery and other items that are for sale there. Please remember that the Post Office is now only closed on Saturday afternoons and Sundays.



www.wylamparish council.org

The Parish Council website is no longer operational. The company which hosted the information went into receivership earlier this year and the IT company who bought the Intellectual Property Rights (IPR) offered the Parish Council a new contract but at considerably higher annual charges. As the Parish Council also intends to change the format of the site, it decided not to take up this offer and to use this opportunity to look afresh at how its web page information could be improved before finding a new host. We hope that a new site will be running soon and apologise for any inconvenience.

*Wylam Parish
Council wishes you a*

*Merry
Christmas
and a
Peaceful New Year*

Every Second Counts!

Will you be a First Responder?

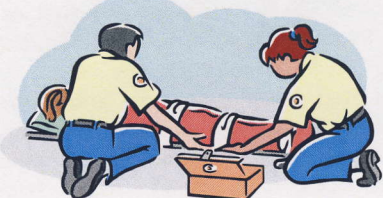
To augment its 'blue-light' emergency service, the North East Ambulance Service (NEAS) is supporting networks of First Responders across the region. First Responders are volunteers from the community who can respond first (hence the name!) to emergency calls from people in their neighbourhood who may have had a heart attack or suffered a stroke. They can give potentially life-saving support until paramedics arrive and take over.

Whenever a First Responder is called, 'blue-light' paramedics are already on their way, but every minute counts and the chances of someone surviving and making a good recovery can be significantly increased if basic treatment is started immediately. First Responders are trained to give basic first aid, in particular using the defibrillator that NEAS provides as part of the equipment issued to First Responders.

No medical expertise is required – the machine itself carries out the necessary tests and operates automatically – but someone has to get it to the right place as quickly as possible and take control of the situation until paramedics arrive; that is the task of the First Responder.

The Parish Council recently heard a presentation from a North East Ambulance Service representative and now wants to explore the possibility of setting up a First Responder network in the village. This would be a group of people willing to undertake the necessary training and then to participate in a rota to respond to emergency calls passed on through the NEAS Control Room.

To take this further, a meeting has been organized to which anyone interested in perhaps becoming a First Responder is invited. An NEAS representative will give a full description of what is involved and describe how other local communities have organized similar schemes. This meeting will be held in the Institute on Monday 4 February 2013 at 7:30pm. Do please come along, it really could make a difference to someone in the village.



Plans for an Outdoor Community Classroom

Wylam is rich in indoor meeting space and could soon also have an outdoor space for learning. Wylam First School and Community Orchard are working together to raise funds to construct an outdoor classroom on the First School field. The lower field already accommodates the Community Orchard and will now also provide a unique setting for community groups to meet and enjoy the surrounding environment. This outdoor space will be accessible to all, with its main aim being to facilitate learning. It will be a roofed, open sided building with a power supply and screen for presentations and films.

Community groups are being invited to provide letters of support for the project to both demonstrate their interest and to be used for grant applications. For further information about the project or fund raising efforts please contact Kathryn Creighton on 852833 or by email to riffarmcottage@me.com

"Jump for Joy"

Organisers of this popular event, which has become established as a regular in the Wylam calendar, have opted for a change in 2013 when the "Teddy Bear Parachute Jumps" and associated stalls, games and food will switch to a Saturday. Make a note of Saturday 8 June and start designing those teddy bear life-savers! Anyone interested in helping with the event is invited to go along to a planning meeting at 4 Woodvale Gardens on Thursday 17 January at 7.30pm.



Remembrance Sunday

Over 200 people of all ages packed into Wylam Methodist Church on 11 November for a fitting united service conducted by the minister, Rev Jane Cook.

By the time the congregation had processed to the Village War Memorial for the formal Act of Remembrance and two minute silence at 11.00am, the crowd had clearly more than doubled.

We were delighted this year that a sizeable group of soldiers from Albemarle Barracks were also able to join us, adding significantly to the poignancy of the occasion. These were members of the workshop team attached to 39 Regiment (Royal Artillery), many of whom have very recently returned from a tour of duty in Afghanistan.

As wreaths of poppies were laid at the foot of the memorial, perhaps many people were thinking of the stories that no doubt lie behind the 53 names of men from this village who died during two world wars and whose names are recorded there; events which happened at a time when Wylam was much smaller than it is today.

Dropped Kerbs

We are grateful to County Councillor Paul Kelly who, in response to a request from the Parish Council, agreed to use some of the allowance he receives for small schemes within his area to have dropped kerbs installed on Station Road, making it easier for people in wheelchairs, particularly from the Stanley Burn Care Centre, to access the path into the village.

Christmas Celebration



Once again we are very grateful to Tom and Lois Martin for the Christmas tree that we expect to be erected at Charlie's Corner by the time you read this. Together with the lights on the trees in the Institute garden, which the Parish Council provides, the tree does much to create a festive atmosphere at this time of year.

We hope that as many as possible will come along at 1.15pm for a prompt 1.30pm start on Thursday 20 December to share in a spot of carol singing around the tree, assisted by children from Wylam First School.

After this little celebration, everyone is invited to the Methodist Church Hall for a warming cup of coffee, tea or juice for children.

Grass Cutters Needed

The Wylam Community Playing Fields Association is looking for more volunteers to help with grass cutting. If you are interested and possibly able to help, please contact Willie Appleby on 853479 or email to

willieappleby@lineone.net



Parish Council Elections

In May 2013, which is only 5 months or so away, elections will be held for County and Parish Councillors and all registered electors in Wylam will have a chance to vote. It's actually six years since the previous elections were held because the normal four year cycle was extended following the establishment of Northumberland as a "unitary authority" in 2009. The Parish Council has of course seen a few changes during this time because one or two members have resigned, for various reasons, and their places have been filled by co-options.

Wylam Parish Council is composed of eight Parish Councillors and **all these positions will be "up for grabs" in 2013.** Naturally, some sitting members are expected to stand for re-election but it is currently understood that not all are intending to do so.

It is the hope of this council that a good number of candidates will be prepared to put their names forward for election in May and we wish to promote this idea and encourage people to stand. Being a Parish Councillor clearly comes with certain obligations and responsibilities and any councillor will tell you of occasional frustrations. However, many aspects of the job can be extremely interesting and even rewarding, though not financially of course! One of the strengths is that each member brings their own local knowledge, experience and personal talents, which makes for a harmonious balance.

Northumberland County Council is encouraging people to stand for parish and town councils and a meeting is to be held at Prospect House in Hexham at 6.00pm on Thursday 24 January for people who may be interested and wish to learn more. You are invited to contact the Parish Council Clerk if you would like to attend and require more details.

Whether or not you wish to go to Hexham, Wylam Parish Council is also keen to encourage wider participation. Anyone interested, even if you are just curious at this stage, to talk informally to any one of the current Parish Councillors, whose contact details can be found in the latest Wylam Information Card - or from the Clerk if you cannot find your copy!

Please don't just sit back and expect others to come forward. A Parish Council is only as strong as its component parts and we know that you all want the best for our community.



"Past and Present" Calendar

By popular demand, friends of Wylam Pre-School Playgroup have produced another "Wylam Past and Present" calendar for 2013, which includes several rarely-seen old postcards of the village, together with pictures of the same scenes today.

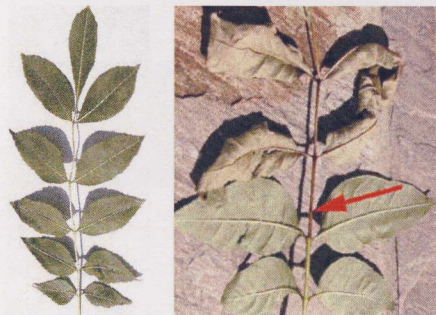
The new calendar is sure to be very popular, so make sure you get yours soon. Most village shops will have them. An ideal Christmas present.

Parish Council Budget 2013-14

Within the next very few weeks the Parish Council will be finalising its budget for the next financial year.

The Parish Council tries to provide financial assistance to groups and organisations within this community where the need can be clearly demonstrated. If your group has a project or urgent need for funds, please don't wait till the budget is finalised in January when it may be too late, but get in touch now as a matter of urgency.

Ash Dieback



Peter Fisher, Tree Warden, writes: Readers will be aware of the deadly threat posed by the *Chalara fraxinea* fungus. The ash is one of our most prolific wild trees which hosts a unique and rich ecology of plants, insects, birds and animals. Infected wild trees have been found throughout England and as close as 5 miles from Wylam. Scientific advice is that it may be possible to slow the process but there is as yet no prevention or cure. It is expected that some mature trees will prove resistant. During summer, symptoms include brown curled leaves and leaf stalks and dieback from the crown; in autumn tiny mushrooms grow on shed leaf stalks but in winter identification is very difficult. A video and pictorial guide can be found at www.forestry.gov.uk/chalara#Symptoms.

If you suspect a tree is infected you should call the Forestry Commission's *chalara* helpline (08459 335577) and owners should read the official guidance before taking any action. Residents may contact the Tree Warden, Peter Fisher (853643) for advice.

It is likely that the national response will include further encouragement to plant replacement trees and new woods.

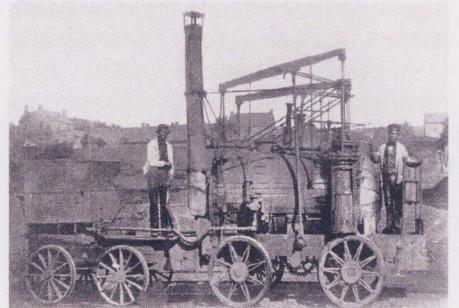
Puffing Billy Festival

2013 will mark the 200th anniversary of the first successful use of a commercial steam locomotive, working on the adhesion principle, which took place here in Wylam. This invention helped to pave the way for the development of modern railways across the world.

Puffing Billy was one of the first of these engines, built circa 1813/14 for Christopher Blackett, (owner of Wylam Colliery), by engineer William Hedley, enginewright Jonathan Forster and blacksmith Timothy Hackworth. Puffing Billy worked for nearly 50 years hauling chaldron wagons along the waggonway between Wylam Colliery and the river staithes at Lemington. Puffing Billy survives today, almost certainly the oldest locomotive in the world to do so, and a fully operational working replica was built by Beamish Museum in 2005.

Throughout 2013, communities and schools from Wylam, Heddon, Newburn and Lemington will be celebrating this anniversary and the important engineering and historical legacy of engines like Puffing Billy. A group of interested parties from these communities has been meeting to discuss possible events and to develop a programme which will include visits to and from Beamish Museum, involving their Puffing Billy replica, community events and an attempt to replicate the steam power that travelled down the lines with "pupil power" that will travel along the waggonway from Wylam to Newburn (along its original route).

Please contact Tom Martin if you are interested in being involved.



"Puffing Billy"

Photograph reproduced with permission of Beamish Museum

This picture was taken at the Haugh Pit in the early 1860s, and just visible in the background are three buildings still standing today - the former school (now Wylam Assembly) of 1854 (far left), Laburnum House (centre) and the Wesleyan Chapel of 1834 (part of today's Methodist Church Centre) on the extreme right.

Wylam Orchard Open Day

Tom Martin writes:- "On 22 September, the occasion of the Orchard Open Day, the sun shone, and the worms came out to play!

The plan was to arrive on site early and put up the gazebo to protect people from the elements, but there was an unfamiliar glowing orb in the sky, something we have seen precious little of this year.

Despite some initial communication problems the afternoon was enjoyed by all, with orchard tours, activities such as willow weaving and face painting, orchard information, produce stalls, and refreshments provided by Wylam First School PTA and Wylam Community Orchard, all providing plenty to do.

The highlight was without doubt the worm charming. Each team had a two metre square of grass on the lower school field on which they had half an hour to encourage as many worms to the surface as they could. Vibration proved to be the key, with teams adopting a variety of techniques including bouncing a ball, banging a drum, and jumping up and down. The winning team succeeded in persuading over twenty 'Mr and Mrs Wiggles' to come out to play. After the count all the worms were transferred to the large compost stack to enjoy themselves.

Over £300 was raised for the Orchard, which will go towards general maintenance and our current project, which is the development of a wildflower meadow".



Worm charming in full swing

..... and, "Wylam in Bloom"

You may remember that in a previous "Wylam Globe" we mentioned the possibility of a Wylam in Bloom event. Well, it did happen! Several members of the Gardening Society approached Wylam Nurseries with a view to a competition to celebrate horticultural excellence and, in its first year there were two categories:- Best Allotment was won by John Fearon and Best Community Project was won by Wylam First School.

Prizes were awarded at the Wylam Orchard Open Day and plans are developing for 2013. Watch out for details of next year's categories.

Accolade for Wylam Resident

We are delighted to congratulate Ken John, who was recently nominated by Wylam Community Playing Fields Association for a WRVS "Diamond Champion" award. Ken was one of 60 men and women from over 200 nominations from the North-East and Cumbria who were invited to Auckland Castle in October to receive their award from Nigel Sherlock, Lord Lieutenant of Tyne and Wear.

Not only that but, from the region, Ken was one of just 10 selected to also go to St James' Palace in London in November to meet The Prince of Wales and The Duchess of Cornwall, who are patrons of this award.

Diamond Champions are chosen for their outstanding contribution as volunteers within local communities and for any who may be unaware; Ken is a long serving committee member and very active supporter of Wylam Playing Fields Association, Chairman of Governors at Wylam First School and a former Tynedale Magistrate. For many years until quite recently he umpired local league cricket matches and still umpires hockey matches throughout the North-East, he is a collector for the British Legion Poppy Appeal and, quite frankly, is simply one of the first to offer help with just about anything going on in the village.

Well done Ken! This community is proud of you and grateful for all your tireless work about which you are always so modest.



Ken in one of his charity modes

Forthcoming Events

The following events will take place in Wylam Institute, unless indicated otherwise.

Sat 15 Dec

Film Club 7.30pm "Meet Me in St Louis"

Sun 16 Dec

Village Carol Service, 6.30pm at St Oswin's Church.

Thurs 20 Dec

Carols around the Christmas Tree at Charlie's Corner with children from Wylam First School. 1.30pm

2013

Wed 9 Jan

Men at Home, Methodist Church Centre. Bill Bland - "Crystal Palace." 10.15 for 10.30am

Sat 12 Jan

Playing Field Assn. Jumble Sale 2 to 4pm

Sat 19 Jan - Film Club 7.30pm

Sat 2 Feb

"Wine & Wisdom" Quiz Night

Mon 4 Feb

First Responders Meeting, 7.30 p.m.

Sat 9 Feb

Playing Fields Assn. Quiz Night and Pie & Peas Supper 7.30pm

Wed 13 Feb

Men at Home, Methodist Church Centre. Peter Hetherington - "Democracy: Real or Imaginary". 10.15 for 10.30am

Sat 23 Feb - Film Club 7.30pm

Sat 2 March

Institute Member's Annual Coffee Morning 10am to 12 noon

Sat 9 March

"Shelter" Murder Mystery Evening

Wed 13 March

Men at Home, Methodist Church Centre. Charles Enderby - "The Queen's Body Guard". 10.15 for 10.30am

Fri 15 March

Cricket Club Quiz 7.30pm

Sat 16 March

Cancer Research Spring Fair

Sat 23 March

Film Club 7.30pm

Mon 25 March

Blood Donor Session

And make a note of these dates:-

Sat 8 June

"Jump for Joy", St Oswin's Church grounds

Sat 22 June

Wylam Summer Fair

Please note: In addition to the above events, Coffee Mornings in aid of Wylam Institute are held on the 2nd Wednesday of every month, 10.30am to 12 noon, and "Friends of Wylam" Coffee Mornings are fortnightly on Tuesday mornings from 10.00am (from 25 September on this programme.)

Deadline for material for the next "Wylam Globe" Monday 4 February 2013

Correspondence relating to this Newsletter should be addressed to:

Mrs. D. Carney,
The Clerk to the Parish Council
Wylam Institute, Church Road,
Wylam NE41 8AP
Tel: (01661) 852498

e.mail: wylampc@btinternet.com

Printed for Wylam Parish Council by the
Gilpin Press, Houghton-le-Spring DH4 4BA.
E.mail gilpin.press@btconnect.com