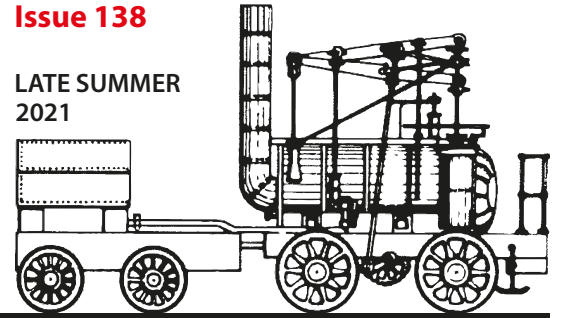


THE WYLAM GLOBE

NEWSLETTER OF
WYLAM PARISH
COUNCIL

Issue 138

LATE SUMMER
2021



FORMER POST OFFICE

Sale of the property on Laburnum Terrace
nears completion - *see page 8*

LOCAL TRANSPORT PLAN

Response from Northumberland County
Council on priorities for road safety in Wylam
- *see page 4*

WORKS TO WYLAM BRIDGE

Details of the essential repair works to Wylam
Bridge, which are expected to commence in
November - *see page 3*

NEW COUNTY COUNCILLOR

Former Wylam Parish Councillor Holly Waddell is
our new County Councillor - *see page 2*

RIVERSIDE LAND

An update on the riverside land near Wylam
Nurseries - *see page 8*

WYLAM WI

How Wylam WI have been keeping busy,
connected and very creative during lockdown
- *see page 4*



COVER PHOTO : The Flying Scotsman passes Hagg Bank on 24th July 2021

A NEW PARISH COUNCIL TAKES OFFICE

In May 2021, five members were elected unopposed to serve on Wylam Parish Council: Diana Carney, Jacqueline Henderson, Luke Hilliard, Martyn Jones and Colin Percy.

This meant that three more members were needed to bring the Council up to full strength and Steven Duckworth, John Hanley and Brendan O'Kane were co-opted on to the Council at its meeting on 12th June. Colin Percy is now Chairman with Steven Duckworth (former Chairman) as Vice-Chairman. You can find more information about our councillors on

the Parish Council's website at :

www.wylamparishcouncil.org.uk

Shortly after the three new members were co-opted, Jacqueline Henderson resigned from the Council. This new vacancy was formally advertised in line with legal requirements. There has been no call for an election. Two applications were received by the closing date of 6th August and so the Council will move to co-opt a further member at its meeting on 13th September. Interviews will be held immediately before the meeting. This co-option

will mean that the Council has its required eight councillors and is operating at full strength.

In thanking the outgoing Councillors (Jacqueline Henderson, Jim Martin, Richard Herrmann and Holly Waddell) for their commitment to the Council and the residents of Wylam, Colin Percy commented: "Being a Parish Councillor is not a glamorous role. It involves a mix of hard work, significant time commitment and often making some difficult decisions. Our departing colleagues contributed brilliantly and set an example to our very welcome new arrivals."

(Continues on Page 2 ...)



Members of Wylam Parish Council : Top row (L-R) Colin Percy (Chair), John Hanley, Diana Carney, Brendan O’Kane. Bottom row (L-R) Martyn Jones, Marie Moore (Clerk), Luke Hilliard
Inset (top) Steven Duckworth (Vice Chair). Inset (bottom) Matthew Hadden (Village Handyman)

OUR NEW COUNTY COUNCILLOR



Holly Waddell at the Falcon Centre

I am Holly Waddell, and I have been elected as your new County Councillor. I grew up in Wylam and have lived here most of my life. I am a former Parish Councillor in Wylam and I currently lead the Guide unit in the village.

Since the Election I have been busy working on several issues in the village.

I met with local Police officers to discuss antisocial behaviour. I have ensured that the “Cyclists Dismount” signs have been returned to both ends of Wylam bridge. After a recent incident, I asked the local schools to cover riverside safety with young people, and have asked NCC to install new safety equipment at Hagg Bank Bridge.

I have also been meeting with various community groups to discuss how we can work together for the benefit of local people.

Top priorities in Wylam going forward are looking at anti-social behaviour, traffic issues and ensuring that safeguarding the environment is a key consideration in all we do.

You can contact me at :

holly.waddell@northumberland.gov.uk

or by phone :

07890 046 700

PARISH GRANT POLICY REVIEW

With the new Parish Council beginning its four year term of office, now is the time to review all of the Council’s policies to ensure that they are up-to-date, appropriate and reflect best practice.

One of the first policies we will be looking at is the existing Parish Grant Policy.

Guiding principles, eligibility criteria and the application form are all being reviewed with a view to the new scheme being launched later this year.

As part of this process the Council will be looking to ensure that the scheme reflects any increased grant-making capability that can be funded via the proceeds from the sale of the former Post Office on Laburnum Terrace (see full article on Page 8 for more detail).

More information will be shared on this in the coming months. If you have any questions regarding grants, please contact the Parish Council Clerk. Contact details are on page 8.

ESSENTIAL WORKS TO WYLAM BRIDGE



Wylam Bridge, looking south

Northumberland County Council (NCC) is planning to carry out works on Wylam Bridge.

The works are necessary to refurbish the bridge, address issues with the structure and to extend its working life. An external contractor will be repainting the bridge which will involve:

- Installing a scaffolding system beneath the bridge, including sheeting to enclose the scaffolding and tanking to contain debris from subsequent site operations.
- Removal of existing paint using grit blasting to expose the bare metal over the whole of the below-deck steel bridge elements.

• The bridge will then be repainted. The colour of the new paint system will match, as closely as possible, the current paint system.

• Once the paint system has been applied, the scaffolding system will be removed.

It is expected that the works will start in November 2021 and last approximately 14 weeks, concluding in February 2022.

Whilst the works are taking place, a traffic management system will be operational to protect the site staff, pedestrians and motorists.

It is anticipated that the traffic management system will be a single lane closure. This may, however, change to a full road closure, depending on consultation with Network Rail and NCC Traffic Management Section. The aim is to minimise disruption as much as possible.

The County Council has promised to keep us informed of progress on the scheme. Once more information is available we will publicise it via our Facebook page and in the Autumn issue of The Wylam Globe.

COMMUNITY TRANSPORT NORTHUMBERLAND



The **Royal Voluntary Service (RVS)** advises that its Community Transport Service is back to being fully operational and open for new referrals to the service. A referral form can be obtained by contacting the RVS (see below) or Marie Moore, the Clerk to the Parish Council (contact details on page 8).

The RVS has volunteers ready to support over 50s who seek help to reduce isolation, loneliness and to reconnect with their local communities. A helping hand to rebuild confidence, its volunteers will support clients by providing transport to their favourite club, for shopping, to attend medical appointments, personal care appointments and more, enabling them to remain independent and connected.

RVS drivers are volunteers. It is asked that the client covers their fuel and running costs. Just let RVS know about the journey and it will give you an idea of the cost. With friendly help, freely given, RVS volunteers enjoy sharing their time and provide support and companionship. They undergo the proper checks and carry ID so you can be sure they're genuine and trustworthy.

RVS volunteers, who come from many walks of life, are all trained in Safeguarding, Dementia Awareness and Confidentiality. They all agree that volunteering is hugely rewarding.

The RVS wants to encourage more people to join its team of volunteers. It is very keen to hear from people who would like to share their gift of time, along with their own unique talents. If you are interested in becoming a volunteer, see:

<https://volunteering.royalvoluntaryservice.org.uk/volunteer-search>

or contact the RVS Service Manager:

Tracey Wiczorek

Northumberland Services
ROYAL VOLUNTARY SERVICE
Cheviot Centre

12 Padgepool Place
WOOLER, Northumberland
NE71 6BL

Main Contact: 01668 260 248

Mobile: 07771 388 129

Email:

tracey.wiczorek@royalvoluntaryservice.org.uk

Website:

royalvoluntaryservice.org.uk

WYLAM BEGINNERS BAND

Please contact **Helen Walker** on **07751 723 806** or Helen.walker@ymail.com if you, or any family member, is interested in re-forming the mixed ability band in Autumn to help beginner musicians gain confidence.

WYLAM WI IN LOCKDOWN



Wylam WI Committee Zoom meeting

We've been working hard to keep our members happy. We've been online and found interesting speakers for our Zoom meetings, including the Pearl Lady who lives in France, and the Gin Lady who made us all very happy.

The Zoom meetings were well attended by about 75% of our members, and we ran support classes on internet usage, so that in the end we had 80% of our members attending. For those who had no access to the internet we started a monthly news sheet with quizzes and all the news of our branch and what was going on in the Federation.



Stobo's window display "Show the Love"

We took part in WI campaigns such as "Show the Love", when Stobos let us decorate their window with plants and green things and posters, and "Wear a Hat Day" when members submitted photos of their creations and prizes were given.

To let all our members know how much we love them, we celebrated events such as Christmas and Easter with presents: for Christmas, samples of chocolate to taste and evaluate, for

Easter, bags with a primula in a pot, a crispy cake with fluffy chicken and a poem.



"Wear a Hat Day"

We co-operated with the Wylam Community Help Covid19 Group and the Black Bull by creating posies to go with the Sunday lunches they were delivering to isolated people.



Posies with Sunday lunch at The Black Bull

On one recent Saturday, we held a cake and preserve stall on the grass beside the Old Post Office to celebrate NHS Awareness Day, and a real tea party with cake on the actual day. Our efforts were rewarded when 28 people re-joined us when subs were called for. No end to ingenuity under pressure!

LOCAL TRANSPORT PLAN 2021-22



Speed detector on Main Rd

In October 2020 the Council submitted its Local Transport Plan priorities for 2021-22 to Northumberland County Council (NCC). The key priorities focussed on:

- Improving road safety through the village centre by reinforcing the existing 20 mph speed limit zone.
- Possible introduction of parking restrictions and speed control measures in the vicinity of the Fox and Hounds and the Co-op.

We also asked for an update on the County Council's intention to move forward with the introduction of a 40mph speed limit on Holeyn Hall Road. A response from NCC has been received and this will be considered by the Parish Council at its next meeting in September.

The good news is that the County Council has indicated that they will be carrying out feasibility work to look at parking and speed control measures in the vicinity of the Fox and Hounds and the Co-op and assessing ways to reinforce the 20mph limit and improve road safety generally throughout the village.

At this stage, no specific details of the feasibility study are available.

NCC has not provided any further information with regard to the Holeyn Hall scheme, but the last update confirmed that a design brief has been submitted to the NCC Highways Design team to look at possible options.

The Parish Council will be consulted on these in due course.

GREEN MATTERS

WYLAM JUBILEE FIELD



Lynne Wood, at the Spar

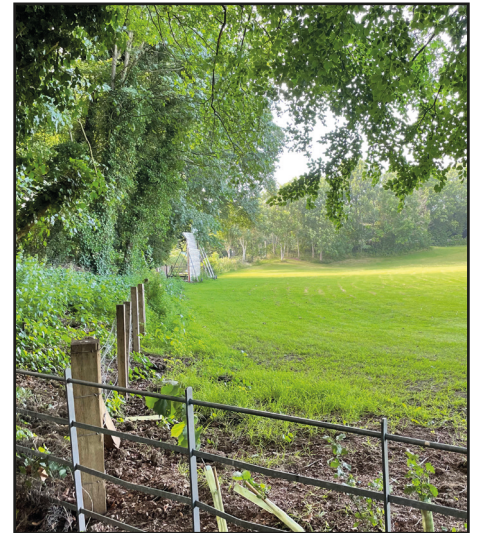
NO MOW MAY

Maybe you saw Lynne, Jane, Richard and others by the telephone box during April/May. Perhaps you wondered what their placards meant. They were trying to encourage you to lock up your lawnmower for at least the month of May.

According to the charity Plantlife, if many of us left some portion of grass unmown we would dramatically increase flowers, bees and other pollinators. If you have no lawn, why not grow some wild flowers? (Seeds available from B and K Wharf).

In the next issue we will look at single use plastics and how we can individually, and as a community, reduce their use.

If you would like to get more involved in this issue please contact Lynne Wood, our GREEN MATTERS coordinator on 01661 852714



Western boundary of the Jubilee Field, after clearance

As many of you in the village are aware, the Jubilee Field is owned in trust on behalf of our community and managed by a small group of volunteers. We have a core management team and a wider group of committee members and friends who take on individual projects and provide help for our fund-raising activities.

We also very much appreciate the support that Wylam Parish Council provides, and it was a pleasure to welcome our new County Councillor Holly Waddell for a site visit shortly after she started her new role. We look forward to her support in the future.

With lockdowns, social distancing and people craving the outdoors it has been a pleasure to welcome an increased number of users to the playground and field, a nod perhaps to our wide range of quality play equipment. This increase in usage has led to more wear and tear on the equipment and we are thankful to the Parish Council for awarding us a grant to assist us in replacing the surround of the blue roundabout, carrying out safety work to the foundations to the benches, removing some steps to make the area safer and tidying up behind the tractor shed. This work has now been contracted and will begin early next month. We will endeavour to keep any disruption to a minimum.

As a result of monitoring the safety of play equipment, we have had to remove some of the old activity trail as it was deteriorating to an unsafe

(Continues on Page 6 ...)

STOP PRESS!

GREEN BOOKS GALORE!



Margaret, at Wylam Library

Our lovely librarian, Margaret, has once again triumphed in helping the community. This time she has produced an extensive exhibition of non-fiction books about green issues for young and old. Subjects include plastics, global warming, litter and so

on. Please do visit the exhibition and borrow one of the books in order to better understand the issues we face this decade.

Margaret also reminds us that more books on green issues are available upon request.

level but we have exciting plans for installation of new equipment which will be in keeping with the wobble bridge design. This will be a longer term project and we have applied for Co-op funding to help. Hopefully we will be able to report on our success in the next issue of The Wylam Globe!

The western boundary fence was tidied up as the ivy was getting so heavy it was damaging the fence and growing into the turf on the field. We also organised a volunteer work party following this to lop and trim some small trees on this boundary and wish to thank those who participated especially Liz Bray the PC Tree Warden and Graeme Smart our friendly local ecologist for their helpful advice.

Wylam Rockets have been awarded a Football Foundation grant for pitch improvements. This will include slit tine aeration of the playing surface, over-seeding with a dwarf dense packed grass seed followed by application of a fertiliser, all part of a 6 year plan to improve the facilities for grassroots football. We have struggled with pitch quality for a long time.

The Rockets restrict the number of home matches they play to protect the pitch, so improvements are much needed and will benefit everyone who uses the field.

We missed seeing you at the Summer Fair again and really hope we can host some village events as restrictions are eased from the Autumn.

In the meantime, please continue to enjoy our field safely.

If you would like to become more involved or have any questions, please contact us via our Facebook page: [@wylamjubileefield](#)

or by email:

wylamplayingfield@gmail.com

OVERHANGING HEDGES & VEGETATION

Could anyone who has a hedge or vegetation bordering a public pavement or path PLEASE ensure it is regularly trimmed back. It is very difficult, especially for some older and disabled people, to navigate the village in some areas, especially when it has been raining.

AN UPDATE ON CHARLIE'S CORNER



Charlie's Corner viewed from Wylam Institute

At its meeting on 10th May 2021 the Parish Council received a petition and heard residents' comments regarding the use of Charlie's Corner by dogs and their owners.

Council members were struck by how Charlie's Corner had been described as a 'community hub' and a meeting place and how it now seemed to be an important facility for residents of the village. It was also noted that dog owners had been considerate and respectful of the facility.

It was, however, acknowledged that, as Wylam is a village of approximately 2000 residents, a whole-village view was needed regarding the future use of Charlie's Corner.

The Council agreed that a wide ranging and inclusive public consultation exercise would be carried out with regard to the future use of Charlie's Corner, following which the analysis of responses would be used to inform the Council's decision on the future position.

In the meantime, and until such time as a final decision is made, dogs would be allowed into Charlie's Corner.

All users should comply with all current Government guidance in relation to Covid, should be respectful of the facility, use it safely and ensure that any dog fouling is removed.

The Council will be developing proposals for the public consultation exercise over the coming weeks with a view to also taking the opportunity to consult on other important local issues.

WYLAM INNOVATORS DROP IN

Wylam resident Helen Walker has been thinking how technical issues and innovation might be portrayed in a new way.

The response to the launch of her short video 'Gerald the Sheep's Innovation' at Wylam Library on Thursday 29th July showed there is a strong interest in promoting not only our engineering heritage but also in helping to inspire young people with nature, science and climate innovations for the future.

Helen is aiming to make a series of short real, or fictional, story films with music to help inspire young people to have innovative ideas, and develop confidence to imagine solutions to seemingly impossible problems.

Helen will be at Wylam Library again between 2pm and 4pm every Thursday during the school holidays (not 19th & 26th August) and during the Autumn Term.

Volunteers are needed to share their skills (e.g. singing, craft, pottery, music, narration, science, history, engineering etc.) to help develop some real, and some fictional, village characters and storylines.

Older people are especially encouraged to volunteer, but helpers of all ages may assist too. All support will be given.

Contact Helen on **07751 723 806** for more information, or just drop in at the library. Further details can be found at

www.musilience.com

ULTRAFAST BROADBAND



Current BT OpenReach "Superfast" Terminal on Woodcroft Rd

The pandemic has brought the need for fast and reliable broadband into sharp focus. As a Parish Council, we have been looking at ways to improve broadband service to the Wylam area.

Currently, the fastest possible connection available in Wylam is Superfast Broadband, in which fibre cables reach only as far as terminal cabinets at the roadside. The connection to individual properties is then via copper wire, meaning signal

and speed will reduce, depending on how close you are to the telephone exchange or street cabinet.

Ultrafast (also known as Full Fibre or Gigabit) Broadband brings fibre cable directly into your house, improving speeds dramatically.

Benefits of Ultrafast Fibre Home Broadband :

i) Ultrafast broadband supports multiple devices connected to the internet at the same time with no reduction in speed.

ii) Increase the value of your home. Buyers are becoming increasingly reluctant to invest in a property with inadequate broadband speeds.

iii) Quicker and more reliable internet, making it easier to stream films and music and join all those Teams and Zoom meetings.

There is currently national voucher funding available to help cover the costs of installation :

gigabitvoucher.culture.gov.uk

A condition of the funding is that customers enter into a minimum 12 month contract with a fibre supplier.

To find out more about different suppliers and options, visit the iNorthumberland website :

inorthumberland.org.uk

WYLAM HERITAGE PARTNERSHIP

Work continues with the National Trust to form a Wylam Heritage Partnership. An early action is to reopen George Stephenson's Birthplace and the Parish Council's Railway Museum in a coordinated way. Volunteers, for museum supervision and to lead guided walks, will be needed. We also want to promote wider discussion about the future of the Railway Museum in the context of the debate about the future of the Falcon Centre. Contact the Parish Council Clerk if interested (contact details on page 8).



Wylam Railway Museum - Volunteers needed

WYLAM RESIDENTS URGED TO REPORT INCIDENTS OF ANTI-SOCIAL BEHAVIOUR



Wylam Waggonway, recently the scene of illegal motorcycle riding

Following the significant increase in incidents of anti-social behaviour (ASB) experienced in, and around, Wylam since the first period of lockdown in 2020, the Parish Council has worked with both Northumbria Police and Northumberland County Council to ensure that measures are in place to tackle issues which have

caused a huge amount of distress locally.

One key development saw the introduction of a Public Spaces Protection Order (PSPO) relating to alcohol which covers the whole of Wylam Parish. This has been used by the Police to good effect with them dispersing groups from key locations

and confiscating alcohol.

Whilst there has been an overall reduction in the number of incidents being experienced and reported, as restrictions are lifted, the Police are keen to reassure residents that they continue to patrol the village for ASB incidents, to enforce the PSPO and in relation to reports of motorcycles on the Waggonway.

The Police have asked that residents continue to report ASB incidents in Wylam (especially where alcohol consumption is involved) by calling **101**, or to use the online reporting tool at :

northumbria.police.uk

They have, however, stressed that if motorcycles are seen riding illegally and endangering the public this should be reported to the Police immediately by calling **999**.

The Police are keen to stress that residents should **not** approach motorcycle riders themselves!

ANNUAL VILLAGE MEETING



Wylam Institute, usual venue for the Annual Village Meeting

The Parish Council usually arranges an Annual Village Meeting in May of each year. We were unable to do so in 2021 due to pandemic restrictions.

We still hope to hold a meeting later this year, dependent upon Covid guidance. If this does not prove possible, we may hold a virtual Village Meeting instead. We hope to generate as much community involvement as possible.

If you have any suggestions regarding either the format of the meeting or issues to be discussed then please contact the Council Clerk.

RIVERSIDE LAND

A statement by Wylam Parish Council concerning the land slippage affecting an area of riverside land south of Wylam Nurseries and east of Stephenson Terrace

At its meeting on 12th July 2021 the Parish Council was updated on the outcomes of a joint meeting held on 8th July with officers from Northumberland County Council, Tom Martin of Wylam Nurseries and County Councillor Holly Waddell. The meeting provided a welcome opportunity for all parties to clearly state their position on the matter and to discuss next steps.

A number of key outcomes were agreed at the meeting and these are being actioned with a view to a further meeting being arranged as soon as possible.

The Parish Council recognises the seriousness of this issue, continues to liaise with its Insurer and will continue to work collaboratively with all parties towards a resolution of this matter. A further update will be issued in due course.

SALE OF FORMER POST OFFICE



The former Post Office, Laburnum Terrace

The Parish Council is pleased to report that the sale of the former Post Office, at 3-4 Laburnum Terrace, is progressing well and we are hopeful that the sale will be completed in the near future.

Those living nearby will also be pleased to hear that the property will, in future, be known as 'The Old Post Office' hopefully avoiding any future confusion over duplicated house numbers!

Once the sale has been finalised, the Parish Council will be carefully considering how the funding generated can be used to benefit the local community.

More on this will follow in the coming months.

PHOTO COMPETITION



Did you like our cover photo?

In future issues of the **WYLAM GLOBE** we'll feature a photo of our beautiful village on the front cover, and we'd like **YOU** to take it.



Photos should be :

- Taken in, or around, Wylam
- Ideally landscape orientation
- JPEG format, as high resolution as possible
- Colour or black & white
- Your own work (no copyright images)
- Not manipulated (beyond minor retouch)
- Not containing identifiable persons

Please send entries to the Parish Council Clerk via email
(see information to the right of this column)

Parish Councillors will choose a winning entry prior to publication.
Note that there is no cash prize.

WYLAM HAUGHS NATURE RESERVE

The wild flowers have been lovely this year on the Reserve but August sees the end of the season and most plants are now setting seed. The meadows have not been cut since 2017 but the plan is to strim annually, re-starting this year in late August / September. Volunteers will be warmly welcomed to help rake off the "hay".

There will also be some seeding with native yellow rattle in three small plots that are to be cleared of tough grass.

GET IN TOUCH!

We'd love to hear from you!

Please contact :

Marie Moore

Clerk to the Parish Council



clerk@wylamparishcouncil.org.uk



Wylam Institute
Church Road
Wylam
NE41 8AP

Tel : (01661) 852 498

www.wylamparishcouncil.org.uk



Wylam Parish Council



Designed, edited and typeset by :
Martyn Jones