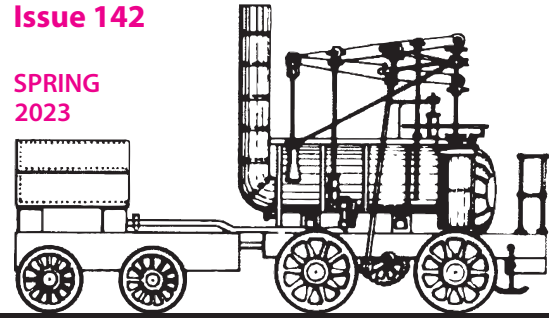


THE WYLAM GLOBE

NEWSLETTER OF
WYLAM PARISH
COUNCIL

Issue 142

SPRING
2023



WYLAM JUBILEE FIELD

An update on fundraising efforts, plus the return of Wylam Summer Fair! - *see page 3*

WYLAM ON WHEELS

The hugely successful Wylam on Wheels cycling event will return this year - *see page 3*

PARISH COUNCIL BUDGET

Details of this fiscal year's Precept and Council Tax contributions - *see page 4*

EEL SCREEN INSTALLATION

Eel screens will be installed at Ovingham Pumping Station - *see page 6*

RECENT TREE WORKS

Details of the planned tree work completed at the Nature Reserve - *see page 7*

NEW COUNCIL CLERK

We say a sad goodbye to Marie and welcome Tracey as our new Clerk - *see page 8*



COVER PHOTO : The view from Rift Farm at dawn, looking towards George Stephenson's Cottage by Willie Appleby

TWO VACANCIES FOR PARISH COUNCILLORS

Following the resignations of Councillors Brendan O'Kane and Lynne Wood, there are vacancies for two Parish Councillors. As there has been no call for an election, we will fill the vacancies by co-option.

Are you passionate about your community? Do you want to help make a long-lasting change? Do you have innovative ideas for the council? Do you have concerns about a specific issue and want to do something about it? If this is you, then we need you.

Being a Parish Councillor clearly comes with certain obligations and responsibilities and any councillor will tell you of occasional frustrations. However, many aspects of the job can be extremely interesting and rewarding.

One of the Parish Council's strengths is that each member contributes their own local knowledge, experience and personal talents. An integral part of a councillor's role is engaging with local people, groups, and businesses

to determine their needs, making decisions on the services and projects the council should take forward, and getting involved to ensure services meet the community's needs.

If you are interested, even if you are just curious at this stage and would like more information on what the role would entail, please speak to any one of the current Parish Councillors or contact the Parish Clerk (contact details on Page 8).

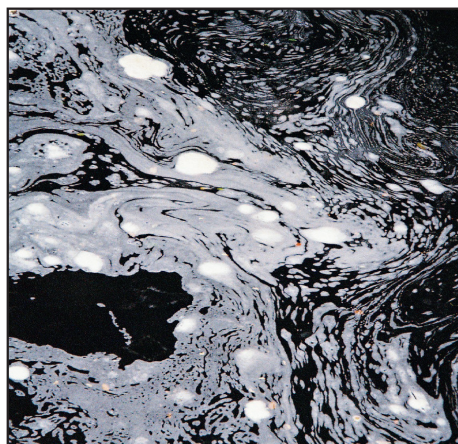
Make a change and become a councillor!

THE CLEAN TYNE GROUP - A CALL TO ACTION

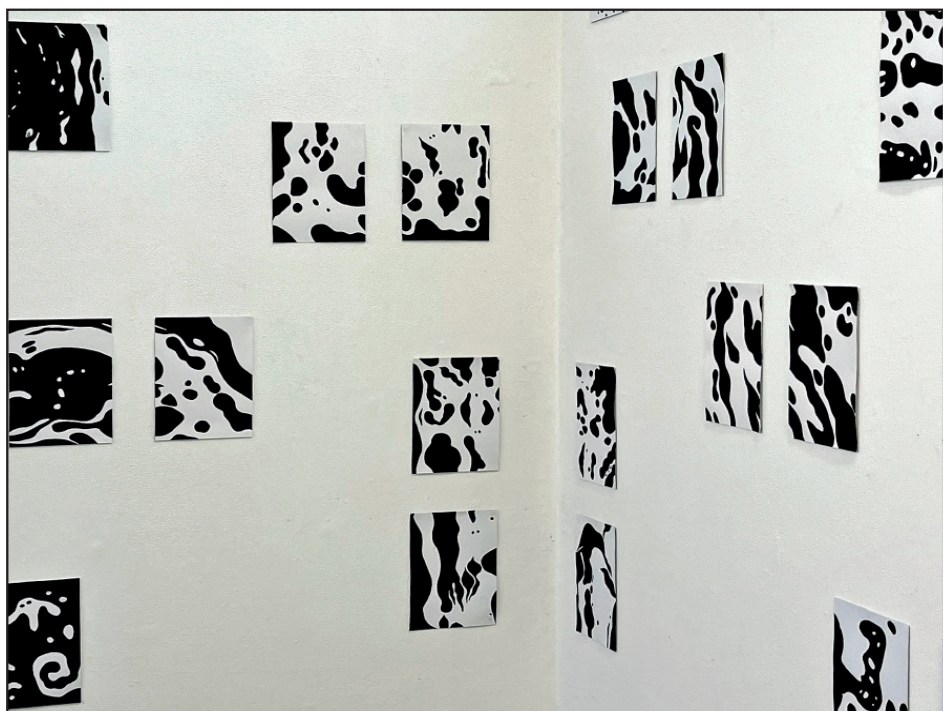
STEPHEN WESTGARTH

Many of you will have seen signs of pollution in the River Tyne near Wylam - floating foam, eddies of rotating scum, odd coloured, slippery rocks, reports of poisoned animals. It's a disgrace. Most pollution comes from the water companies, who are paid to treat our sewage, and from poor farming practice.

The Clean Tyne Group is working on ways to clean up the river. We applied to the government Department for Environment, Food and Rural Affairs (DEFRA) for Bathing Status to be applied to the stretch of the Tyne through Wylam. Bathing Status carries a statutory obligation for all agencies, particularly the main polluters, to clean up their act. We heard in early March that our application for Bathing Status was refused due to relatively low numbers of swimmers compared with coastal locations. There may be a judicial review of this decision brought by other groups who received similar



Evidence of pollution in the River Tyne at Wylam



Part of "Do you know your river?" - a project by student Caitlin Hardy

news but, for now, Bathing Status in Wylam is off the cards.

Meanwhile, the pollution continues. Are you a local resident who loves the Tyne and doesn't want to see it used as an open sewer? Maybe you are a teacher, or pupil, with a school project or a river user such as a swimmer, fisher, or paddler who is tired of saying, "Someone should do something about it!" and want to take action yourself.

If you are concerned about pollution in the river, we can act. Please come to a public meeting in Wylam Institute, Munro Hall, on Wednesday 29th March at 8 pm to 9pm.

The Clean Tyne Group will make a 10 minute presentation, and then hold a public discussion about our options.

Whether you wish to volunteer, have expertise in river management, have professional skills or are just interested in making a change, we need your support.

If you can't attend but are keen to be involved, please contact:

DrStephenWestgarth@gmail.com

[Pictured is the "Do you know your river?" project by Northumbria University art student Caitlin Hardy, which explores pollution in the Tyne at Wylam.]

WEFIBRE UPDATE

Work by WeFibre to install Full Fibre Broadband in Wylam has, unfortunately, been further delayed due to the ongoing gas and road works in the village.

The necessary permits to proceed with the works will now be issued by Northumberland County Council (NCC) in March, meaning that installations to individual homes will begin in May 2023. WeFibre advise that they will be continuing to work with NCC to see if there is an opportunity to advance the issuing of permits.

Residents who have already registered with WeFibre will receive further updates via email.



WeFibre installation is underway, but with a slight delay

GARDEN WALK

DOROTHY EAVIS

On June 3rd this year there will be a Garden Walk in memory of Sharon Lamb, a very much loved member of our community. Tickets for the walk will cost £5 and all funds raised will go to Crisis, a housing charity which was important to her.

The walk will open at 10.30 am and finish at 4.30 pm, with Prudhoe Community Band playing in the Institute garden, weather permitting, at 12.30 pm.

In the evening there will be a Ceilidh beginning at 7.30 pm. For further details, please contact Dorothy Eavis ([07963 942 623](tel:07963942623)) or Cat Wright ([07855 800 753](tel:07855800753)).

WYLAM JUBILEE FIELD FUNDRAISING UPDATE

ROWENA
WARD

Thank you so much to everyone who has supported us over the last few months. It has been a pleasure getting back to fundraising, and we hope you've had fun at our events.

The first Wylam on Wheels (WoW) cycle event held in September was attended by over 200 cyclists from the village and the surrounding areas. The riders were treated to a fabulous afternoon tea provided by the villagers and sponsors and we are grateful to everyone who baked and helped serve on the day. Thank you to Wylam Sprockets whose idea this was and for all their hard work in bringing it to life. We're very much looking forward to WoW 2023.

We held our Music Quiz in October. Thank you to Trish Mytton and Roger Francis for being fabulous hosts. We sold out of tickets in a week, showing how popular this event is. Let's hope we can persuade Trish and Roger back for 2023. We also held a Burns Night Ceilidh in January and again sold out of tickets in record time. We danced to Prudhoe Ceilidh Band, had a delicious haggis supper from Balls in Prudhoe following Alan Currie's dramatic address to the haggis and were treated to some special whiskies donated by Kate Henderson from her late father's collection. Numbers are limited by space for these events and

we're sorry to everyone who missed out.

Wylam loves a Jumble Sale! Thank you to everyone who supported this : it takes a lot of volunteers. We had mountains of donations but unbelievably sold 80% of it. The leftovers went to charity shops and Cash4Clothes and we sent children's coats, some menswear and bedding to West End Refugee Service. The huge number of volunteers made sorting the leftovers so much easier

and maximised the amount able to be recycled.

We're busy planning for Wylam Summer Fair on Saturday 24th June, please save the date. It will be our first Fair for four years and we're very much looking forward to it.

Please ask to join our mailing list if you would like to be kept up to date, or to hear about events in advance of general marketing by contacting:

wylamplayingfield@gmail.com



Wylam Summer Fair will take place on Saturday 24th June 2023

WYLAM ON WHEELS 2023 - SUNDAY 17th SEPTEMBER

JOHN
HANLEY



Following the successful launch event last year, Wylam on Wheels will be back in 2023! The event will take place on 17th September and is organised by the local cycling group, The Wylam Sprockets, and other volunteers. All routes will start and finish at the Jubilee Playing Field and all funds raised will be donated to the Wylam Community Playing Field Association. See our website for more information and how to sign up :

www.wylamonwheels.co.uk

The event is completely inclusive with a choice of four routes to suit cyclists of all ages and abilities.

There will be feed stations on each route and all riders can celebrate their achievements with a delicious homemade afternoon tea at the finish line.

If you would like to volunteer to help on the day please contact John Hanley :

john.hanley@nhs.net

The four routes available are :

1. Couch to 25 km. A road route around the Tyne Valley. Suitable for the casual cyclist and all types of bike. All on quiet roads.

2. 60km Challenger Route. A road route including 3 hill climbs: Hedley on the Hill, Kiln Pit Hill and Slaley (743 m ascent). Suitable for regular cyclists or those who would like a challenge.

3. 100km Super-Challenger Route. A road route for serious cyclists (1432 m ascent) including Hedley on the Hill, Kiln Pit Hill, Slaley and the climbs from Blanchland village

4. Waggonway on Wheels. An off-road route accessible course along the Wylam Waggonway. Suitable for cyclists of all ages and abilities. Any types of bikes are welcome. Adapted bikes for wheelchairs will be available.

WYLAM WOMENS INSTITUTE MEMBERSHIP

VIV SMITH



Wylam WI meets once a month at Wylam Institute

The Womens Institute (WI) is a national membership organisation. Wylam WI is over one hundred years old and currently has over forty members.

We meet in Wylam Institute on the third Tuesday of every month at 2pm for a chance to meet friends, hear a speaker or demonstrator, sometimes have a quiz or other social activity, a raffle and refreshments, which are sponsored by Wylam Spar.

As well as the monthly meeting we have a book group, garden visit group and a lunch club.

Members and visitors from other WIs are always welcome to attend (up to three meetings) for a donation of £3 per meeting. There is no need to book, just turn up on the day.

The annual membership fee is £46, runs from 1st April to 31st March and includes all the great perks of membership:

- WI Life magazine (8 copies)
- Virtual meetings held from around the country
- Access to the member only area online My WI with exclusive recipes, craft projects and more
- The opportunity to involve yourself in exciting local and national campaigns.

Meetings at Wylam Institute this Spring include:

March 21st : Global Warming and Coral Reefs - Speaker : John Bythell

April 18th : Colour Blindness - Speaker : Marie Difalco

May 16th : AGM

Contact Secretary Viv Smith for more information:

smithvivien@hotmail.com
01661 853 713

CANCER RESEARCH SPRING FAIR

For over thirty years the Wylam Branch of the Cancer Research fundraising team has held a Spring Fair, which has raised thousands of pounds over the years.

This year the The Spring Fair is being held on **Saturday 1st of April** at Wylam Institute from 10am until 12 noon.

Stalls will include cakes, plants, bric-a-brac, books, toiletries, a raffle, refreshments and the ever popular Easter Egg tombola. So please start delving into your cupboards as donations for any of the stalls and offers of help on the day will be most welcome.

Contact Ken John for more details:

01661 853 355

WYLAM WEARS A HAT

VIV SMITH

The month of March is Brain Tumour Awareness month, culminating in Wear a Hat Day on Friday 31st March, a national campaign which I hope Wylam will once again take to heart. Last year's event was a tremendous success, with local schools, businesses and organisations taking part throughout the week, raising over £1600.

If you, your business, social group, or fitness class would like to be involved please contact Viv Smith:

smithvivien@hotmail.com
01661 853 713



PARISH COUNCIL BUDGET 2023-24



The Parish Council's Budget for 2023 - 2024 has now been set

Wylam Parish Council has now set its Budget for the 2023/24 Financial Year and has advised Northumberland County Council (NCC) of the Precept it requires. This is the portion of our Council Tax that comes to the Parish Council.

You will be pleased to know that no increase on the 2022/23 level of Precept has been requested. The Precept for 2023/24 remains at £54,000. This means that the annual charge for a Band D dwelling remains at £61.18, that is, £1.18 per week.

Although this is good news, it does not mean that our Council Tax bill will not rise at all.

Due to the need to make savings of £17 million, NCC, along with several other principal councils across the country, has just signed off its Budget plans and agreed an overall Council Tax hike of 4.63%, close to the maximum allowed by central Government. This means that a Band D property in the County will see its annual Council Tax bill go up by £87.91 to £1,985.30.

Any
 handy sustainable
 hints to share? Contact
 Lynne Wood on 01661
 852714

REDUCING FOOD WASTE

Amazingly, we throw away one third of all our food as waste at an average cost of £60 every month.

This waste could be collected, processed and used to generate power. Some could be added to garden and allotment composts.

Northumberland County Council has recently been trialling a home waste collection in some areas as part of its drive to become carbon neutral by 2030. This is excellent news, as recycling more food waste will help us combat climate change.

Let's hope the scheme is rolled out further soon!

You can already reduce the amount of food waste you produce by composting your vegetable peels, grass cuttings and other organic matter. For information on home composting, see the RHS website :

<https://www.rhs.org.uk/soil-composts-mulches/composting>

Note, you should add **only vegetable kitchen waste** to home compost bins and not any cooked food or meat and dairy products which will start to smell and attract rats and flies.



A compost caddy is a good way to store vegetable waste in, or near, your house before adding to a compost heap or bin

TAKING ACTION FOR TREES AND NATURE RECOVERY

LIZ
BRAY

“The UK is sadly one of the most nature-depleted countries in the world. Over the last fifty years, much of the UK's wildlife-rich habitat has been lost or degraded, and many of our once - common species are in long-term decline”

This is the opening paragraph of the Government's Nature Recovery Green Paper 2022. It makes shocking reading.

The Climate Action Group, established by Wylam Parish Council in 2020, has tree planting and nature recovery as a key focus.

So what has been achieved so far here in Wylam?

- In 2020-22 new hedging was planted along the allotments fence and at Wylam Playing Fields. Both hedges are doing well.
- An updated Management Plan for Wylam Haughs Nature Reserve with a volunteer group looking doing regular work.
- New and replacement trees planted at Wylam Wagonway (6) Charlie's Corner (4), Jackson Road (3), and The Orchard (11). Four trees failed to establish. Sadly it is not easy to get small saplings to grow especially if they are in open mown grass.



A new Crab Apple tree planted at Charlie's Corner

- New woodland planting has taken place on private land at Bradley Mill.
- We are in discussion with the County Council about wildlife - friendly grounds maintenance.

There is more planned but really, as you may already be thinking, this is a drop in the ocean of what is needed

to make a difference for biodiversity and for the climate.

The Parish Council is not a large landowner and up to 70% of its land is already tree-covered.

Northumberland County Council owns land too and whilst there are certainly some grassed areas and verges around Wylam which offer possibilities for adding more trees and wildlife habitat to these areas, the gains would not be substantial.

The big opportunities are out there on private land : farms, estates, institutions, and private grounds and gardens.

Everyone has a part to play, and help is on offer, however much land you may own, at no charge as part of the Great Northumberland Forest scheme, a plan to plant millions of trees, creating more wooded landscapes across the county.

See their website for more information :

<https://www.northumberland.gov.uk/Economy-Regeneration/Programmes/Rural-Growth-and-Innovation/Great-Northumberland-Forest.aspx>

You may also be interested in checking out the Woodland Creation Partnership :

<https://storymaps.arcgis.com/stories/>

NEW 'EEL SCREENS' TO BE INSTALLED



New Eel Screens will be installed at Ovingham Pumping Station, starting in March 2023

In March, Northumbrian Water (NWL) and Mott MacDonald Bailey (MMB) will begin to install eel screens at Ovingham Pumping Station.

This is part of a project to replace two of the pumps in the raw water pumping station. These two new vertical turbine pumps will be able to pump 80 megalitres of water a day from the River Tyne to the Water Treatment Works at Horsley. The project is expected to be completed by the end of 2024.

The eel screens, with their 1.8mm mesh, fully enclosed so that no fish can get trapped behind them, will enable NWL to achieve compliance with the Eel (England and Wales) Regulations 2009. They, along with the new pumps, will provide security of water supply for the future. The Regulations were introduced to protect European eel stocks, which are low and continuing to decline. The recovery plan aims to return eel stocks to sustainable levels. Data from other parts of the country suggests that fish stocks in general should improve within 2 years.

NWL is keeping local Parish Councils, including Wylam, fully informed as the work progresses. You will be pleased to hear that traffic disruption along Ovingham Road is expected to be minimal, possibly with a very short period of closure while the eel screens are craned into place.

The contractors, NWL and MMB have offered funding to the Parish Council for a community project in Wylam. A similar offer last year was used to refurbish village benches. This year, the Parish Council is hoping

that the funding can be used for the refurbishment of the bus shelter at Charlie's Corner.

You can follow the project's progress and contact NWL at:

<https://nwcommunityportal.co.uk/Projects/ovingham-vertical-turbine>

PARISH COUNCIL ANNUAL VILLAGE MEETING 2023

Every monthly meeting of Wylam Parish Council is open to members of the public.

Before the start of the meeting, there is an opportunity for those who wish to put questions to the Council. In addition, the 1972 Local Government Act requires the Parish Council to hold an Annual Village Meeting each year between 1st March and 1st June.

This year's Annual Village Meeting will be held at St Oswin's Church Hall on Wednesday 24th May at 7.30pm. This will be a chance to take part in, or listen to, an open discussion about local matters.

This year the Parish Council will be outlining its Parish Plan project, which is in the early stages of development.

The Parish Council is keen to hear your views on this so we encourage you to come along!

WYLAM RAINBOWS LEADERS NEEDED

“
Make sure they can run a three-legged race at 7,
and run the country at 27.”
HELEN
Rainbows volunteer
Inspire girls in Wylam today
Volunteer at girlguiding.org.uk

1st Wylam Rainbow Unit
Tynedale East Division
WE DISCOVER... WE GROW
Girlguiding

1st Wylam Rainbows are recruiting new Leaders to enable the unit to remain open beyond July 2023.

The unit is thriving with girls aged 5 to 7 and an ever-growing waiting list of youngsters wanting to join.

You don't need any special skills or knowledge, you just need to be you. You will be supported by other friendly and enthusiastic leaders from across our local area, Tynedale East Division.

We'd love you to join us at our meetings on Wednesdays after the school Easter holidays, so you can have a full term with the current leadership team, before taking over in September 2023.

To find out more please contact :
wylamrainbows@gmail.com
or take a look at the Girlguiding website:

<https://www.girlguiding.org.uk/get-involved/become-a-volunteer/>

GETTING IN TOUCH WITH NATURE

Most of us feel good when we get out into nature, and research confirms that being in nature is actually good for us.

We are lucky that Wylam is well-endowed with nature. We have woodlands by the Jubilee Field, a Nature Reserve, a Community Orchard, the river bank, the Waggonway, and trees planted throughout the village.

In recent years, research into the relationship between nature and our well-being has shown that being connected with nature is associated with positive impacts in both our physical and mental health. The research also shows that the way we interact with nature is important.

It's not just about green spaces or how many we visit, but a more immersive relationship. For example, we feel happier in a biodiverse environment than we do in a simple grassed space.

One conclusion we can draw from the research is that the more nature and biodiversity is entwined with the spaces in which we live our lives – where we live, shop and socialise – the happier, and better functioning, we will be!

And, of course, increased biodiversity is good for the planet too. While Wylam may feel like a diverse natural environment, a glance at an aerial photograph shows that much of the area around us is monocrop agricultural land with very few hedgerows. There's not really that much space for a diverse range of flowers and plants, or for insects like butterflies and bees to flourish.

As part of its Village Plan, the Parish Council is interested in ways in which we could encourage increased biodiversity around the village. It could be a verge that has meadow flowers instead of mown grass, or an area of green space that could be adapted to encourage pollinators like bees.

Do you have any views or ideas of what we might do and where? Are you keen to help out in developing and maintaining a biodiverse Parish where nature flourishes?

Please write to us :
clerk@wylamparishcouncil.org.uk

NATURE RESERVE TREE WORK



Hazel coppicing is a traditional woodland practice

Walkers passing through the Haughs Local Nature Reserve will have noticed that tree work has been carried out. This has been undertaken in line with the current Management Plan for the Reserve. The overall aim of the Plan is the promotion of biodiversity on the Reserve.

The Parish Council consulted extensively with residents regarding the tree work and, following its implementation, has noted all feedback received, almost all of which has been very positive. As Spring progresses and Summer approaches new growth will transform these areas, which at present look rather bare.

Some trees, principally diseased Chestnuts, have been reduced in height and left as standing deadwood wildlife havens. A group of six Cherry trees immediately beyond the eastern Information Board, have been felled to create a glade in which diverse ground flora and coppiced Rowan can flourish. One of these trees was dead or dying as a result of heavy rose growth, which was also causing it to lean dangerously over the footpath. The rose will regrow this season.

A group of Hazels has been coppiced, the first time this has been

done since 2012. The work is the first phase of rotational coppicing to be carried out over the next seven years.

A difficult decision was taken to fell the large Sycamore adjacent to the proposed western wildflower meadow. This was a very vigorous young tree in open ground and would have compromised the development of the wildflower meadow. There is, however, no shortage of Sycamores on and around the Reserve. We are hopeful that the beautiful Crab Apple immediately adjacent to the felled tree will recover now that it is not overwhelmed by the Sycamore.



The western meadow will benefit from reduced shading

The Oak trees closely bordering the eastern boundary of Wylam Allotments have not been touched, and are the subject of further consultation. Representations have been made to the Parish Council both for and against the felling/crown-lifting of these trees. A member of the Parish Council will meet with NCC's Tree and Woodlands Officer for a second opinion before the Council makes a final decision.

In any case, no further tree work can be scheduled until Autumn/Winter 2023 at the very earliest, after the bird nesting season has ended.

CAR SHARING IN WYLAM

CHRIS BROGAN

Can you imagine what transport in Wylam will look like in ten years time? There are already so many cars in the village.

Are you looking to reduce your car usage, or downsize your vehicle? Are you interested in a car share scheme, or promoting public transport, cycling and walking? If so, then please come along to a meeting on **Monday 27th March, 7:30pm at 3 West View** (Behind the Co-op).

The link below has details of a successful car sharing scheme in Oxford :

<https://sites.google.com/view/shareourcars/setting-up-a-loop?authuser=0>

For more information, contact Chris Brogan on behalf of the Wylam Climate Action Group :

chris.brogan54@gmail.com
01661 852 834

A FOND FAREWELL TO MARIE MOORE



Marie Moore, with her dog Ella

A WARM WELCOME TO TRACEY WOOD



Tracey Wood

Following the departure of Marie Moore, the Parish Council is delighted to welcome Tracey Wood as our new Clerk.

Tracey has over 20 years' experience of finance, administration and project management, monitoring and delivery. She raised her family in Prudhoe, enjoying many family days out in Wylam over the years. In her spare time, Tracey is a Trustee for the YMCA in Newcastle and a Dementia Champion, working across communities in Newcastle in both these roles.

We wish Tracey every success and look forward to working with her. Please do say hello if you see her in the Institute office or around the village.

GET IN TOUCH!

We'd love to hear from you!

Please contact :

Tracey Wood

Clerk to the Parish Council



clerk@
[wylamparishcouncil.org.uk](mailto:clerk@wylamparishcouncil.org.uk)



Wylam Institute
Church Road
Wylam
NE41 8AP
Tel : (01661) 852 498

www.wylamparishcouncil.org.uk



Wylam Parish Council



Designed and edited by:
Martyn Jones

ENTER OUR COVER PHOTO COMPETITION!

Why not enter the Wylam Globe cover photo competition?

Congratulations to **Willie Appleby**, who was the winner for this issue.



- Photos should be :
- Taken in, or around, Wylam
 - Ideally landscape orientation
 - JPEG or PSD format, with as high resolution as possible
 - Colour or black & white
 - Your own work (no copyright images)
 - Not manipulated (beyond minor retouch)
 - Not containing identifiable persons

Please send entries to the Parish Council Clerk via email (see information to the right of this page)

Parish Councillors will choose a winning entry prior to publication of the next issue of The Wylam Globe. Note that there is no cash prize.

In February, Wylam Parish Council bid a fond farewell to our Clerk, Marie Moore, who is retiring after 4 years in the role to focus on family responsibilities.

Marie has provided the Council, and indeed the whole of Wylam, with exceptional service during her time as Clerk. She has supported us with expert advice, liaised with numerous local organisations and suppliers to ensure that the Council's business functions smoothly, and has been at all times the very model of efficiency.

We will miss Marie a great deal, and wish her all the very best for the future. We hope to still see her in Wylam from time to time walking her dog, Ella.

MEMORIAL BENCH



The new bench is at the junction of Chapel Lane and Main Rd

A new bench has been installed at the junction of Chapel Lane and Main Road, in memory of Wylam resident Debbie Conley, who sadly lost her life to cancer in 2022 at the age of only 49. Debbie spent most of her life living in Wylam, and leaves behind three young children Aidan, Erin and Lewis.

The bench installation has been funded by Debbie's mother Dorothy.