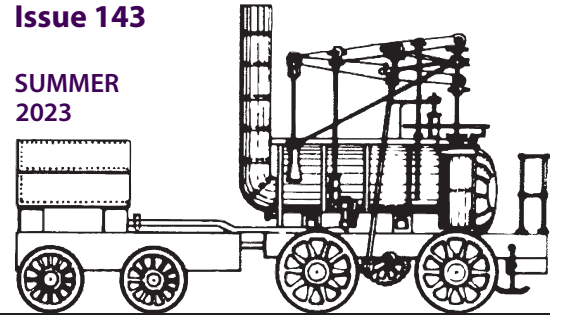


THE WYLAM GLOBE

NEWSLETTER OF
WYLAM PARISH
COUNCIL

Issue 143

SUMMER
2023



NEIGHBOURHOOD PLAN

A neighbourhood plan is to be crafted to define priorities for the village - *see page 2*

SUMMER FAIR RETURNS

Wylam Summer Fair is back after an absence of several years- *see page 5*

RIVER SAMPLING BEGINS

Water from the River Tyne at Wylam will be tested for pollutants - *see page 9*

COUNCILLORS NEEDED

Help your community by becoming a Parish Councillor! - *see page 9*

CLOCK TO CHIME AGAIN

St Oswin's clock chimes are to be repaired after a long silence - *see page 10*

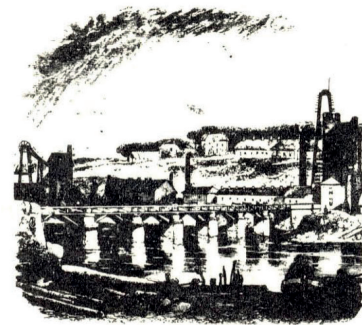
TAKE UP BELL RINGING

Take up a uniquely British pastime and learn to ring church bells - *see page 11*

50 YEARS OF THE WYLAM GLOBE!

WYLAM GLOBE

The Newsletter of
Wylam Parish Council



Wylam in 1860

Number 1

July 1973

INTRODUCTION

For some time the Parish Council have been considering producing a periodic newsletter, giving information about what the Council itself is doing, and including other items and issues of general interest relating to the village. At its meeting on the 15th June the newly elected Council wholeheartedly supported this idea and agreed to experiment with a quarterly newsletter - of which this is the first issue. Having decided to publish, the next problem has been to select a suitable name'.

We are suggesting calling it the "Wylam Globe".

The front cover of the first edition of the Wylam Globe, printed in July 1973



Fifty years ago, in July 1973, the very first edition of the Wylam Globe dropped through letterboxes across Wylam, and a much-loved village publication was born.

Parish Councillors Philip Brooks, Ellen Jacobson and Joan Taylor had been given the task of preparing and editing the newsletter. Philip would go on to edit the Globe for 32 years! Originally produced on a typewriter, it has been in print ever since, keeping

Wylam residents informed of village news, developments and general goings-on.

The name "Globe" was chosen in reference to a famous 19th century newspaper, The Globe, to which J. F. B. Blakett, whose family were Squires of Wylam for nearly 300 years, was a frequent contributor.

The Parish Council of 1973 asked residents for other naming suggestions and the publication you

are holding could have been called "Wylam Dilly" or "Puffing Billy" if different decisions had been made!

Given the Globe's significant place in Wylam life, we have added extra pages to this issue to include a timeline of events which were reported in the Globe and the recollections of Barbara Brooks, widow of Philip Brooks, and her family. You will find these on pages 7 and 8.

A NEIGHBOURHOOD PLAN FOR WYLAM



A Neighbourhood Plan will enable us to set clearly defined community priorities for the village

Neighbourhood Planning is a right for communities, introduced through the Localism Act 2011. The Parish Council is the qualifying body for leading the Neighbourhood Planning process.

Wylam Parish Council has been looking at producing some form of Village Plan with the aim of defining future policies and spending priorities, especially with regard to prudent use of the money held from the sale of the former Post Office premises in Wylam.

Several Parish Councillors recently attended a webinar on Neighbourhood Planning hosted by the Northumberland Association of Local Councils and Sarah Branningan from the County Council's Neighbourhood Planning Team. This confirmed our view that a Neighbourhood Plan would be right for Wylam Parish. Funding of up to £10k is likely to be available plus support, advice and assistance throughout from Northumberland County Council (NCC). We will shortly be meeting with a member of NCC's Neighbourhood Planning team to discuss the detail.

Once a Neighbourhood Plan is adopted (or 'made') by the Planning Authority, it is a statutory document, a part of the statutory Development Plan for Northumberland. It enables the community to take the lead in producing policies and a vision for the future of the Parish.

A key requirement of the Neighbourhood Planning process is community engagement. Information gathered from this engagement will give a clear picture of community priorities and enable us to formulate a vision statement and set priorities and policies for

Wylam Parish. In other words, this is not a 'top-down' exercise. The priority issues and vision come from you, the community of Wylam. A Neighbourhood Plan is built from the ground of the community upwards.

Following formal designation of the Neighbourhood Plan Area (Wylam Parish), we will need to set up a Steering Group, which should include members of the community as well as Parish Councillors.

There will be lots of work to do. If you are interested in this process, or have skills that you feel would be useful, please get in touch with the Parish Clerk (**contact details on page 12**).

SHALL WE HAVE AN ANNUAL VILLAGE PICNIC?

When an outdoor event has a fixed date, like a football match, or a wedding, the British character often produces plenty of stubborn optimism.

The Coronation Picnic held on the Playing Fields in May 2023 was weather dependent, but so many village organisations and individuals were stubbornly optimistic and planned for a fine day. We were lucky, and the sun shone on us.

The Parish Council warmly thanks the WI for refreshments, the Brownies and Cubs for energetic activities, and for all the goodwill that was brought on the day, along with picnics and rugs.

Crown-making was a source of entertainment, and there were some lovely pieces of work, but a parade was beyond our organisational skills on the day!

Perhaps we can have a Spring Picnic next year? What do you think? Is there sufficient stubborn optimism for us to plan it just in case we get lucky again?

Please contact the Parish Council Clerk with your thoughts (**contact details on page 12**).

WYLAM ON WHEELS RETURNS IN 2023



Wylam on Wheels returns in September!

Wylam on Wheels will be back in September! Last year's event raised over £5,000 to support the fantastic work of Wylam Community Playing Fields Association.

This year, the event includes three road route options and an accessible event on the Waggonway. All the information about the event is on the website:

www.wylamonwheels.co.uk

If you aren't able to cycle, there are other ways to support the event :

1) Help out with the Afternoon Tea

After the ride, the cyclists will be served afternoon tea in the Jubilee Field so we are going to need a lot of cakes and savouries!

We would be really grateful if you could pledge to bake a cake or a savoury dish. Everyone who pledges to bake will be entered into a draw for the chance to win afternoon tea vouchers for two at Bradley Gardens.

We would be happy to collect your freshly baked goods or you can deliver them on Saturday 16th September to :

**Fairholme
The Crescent
NE41 8HU**

or to the Jubilee Field on the morning of the 17th September.

Please contact Sarah Grainger at wylamonwheels@gmail.com

or message
07946 488 865

2) Volunteer to be a Marshal

We need a few more safety marshals on the route . If you can spare a few hours to help please contact John Hanley :

07899 981 012

WYLAM PARISH COUNCIL ANNUAL VILLAGE MEETING 2023



Wylam Parish Councillors presented reports and took questions from residents during the Annual Village Meeting

The Parish Council was pleased to host the first Annual Village Meeting since 2019 on Wednesday 24th May.

The meeting was convened and chaired by Diana Carney, the Parish Council's new Chair and provided an opportunity for the residents who attended to hear more about the work of the Council and to put questions to Councillors.

Topics covered included information about the role of the Parish Council and an introduction to the process of producing a Neighbourhood Plan for Wylam. Colin

Percy, as outgoing Chair, presented the Council's Annual Report.

Colin Hall, the Environment Agency's local Flood Resilience Engagement Officer brought along an informative set of display boards and materials and gave an enthusiastic presentation on the importance of Community Flood Planning, securing a further five volunteer Flood Wardens for Wylam.

Stephen Westgarth, who leads the Clean Tyne Group, updated the meeting on the Group's progress. The Parish Council's volunteer Tree

Warden, Liz Bray, brought along aerial photographs of Wylam Parish and a draft plan for hedge and shrub planting on the borders of Charlie's Corner.

Questions raised by those present included road safety and traffic issues in the village, tree work at the Nature Reserve and the landslip below Wylam Nurseries. On the latter topic, it was emphasised that the Parish Council is continuing to follow guidance received from its insurer and their legal team.



The meeting isn't over until the last cup is washed!

COMMUNITY FLOOD PLAN IN PLACE

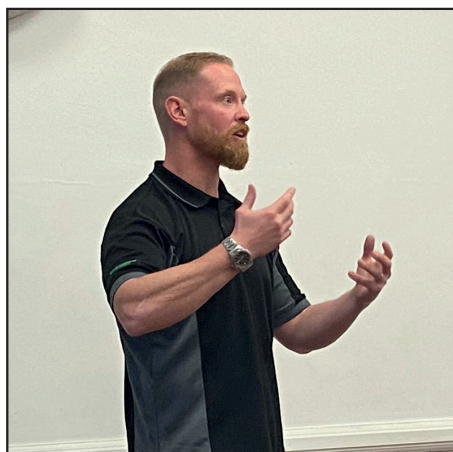
The Parish Council and the Environment Agency are calling on local people to play their part in Wylam by registering to volunteer as a Flood Warden.

Flood Wardens act as the eyes and ears on the ground, providing an immediate link between the Environment Agency and communities at risk, getting vital information out to local residents.

The Environment Agency helped the Parish Council to create a contingency plan in the event of flooding, in the form of the Wylam Community Flood Plan. To ensure that the plan can be used effectively in the event of a flood, we need new people to volunteer their time.

This is not a time-consuming role, only requiring your support when flooding is possible and to ensure the plan remains up to date.

Flood Warden Groups exist throughout the country and help ensure the Environment Agency's flood warning messages reach the local community and are acted upon swiftly.



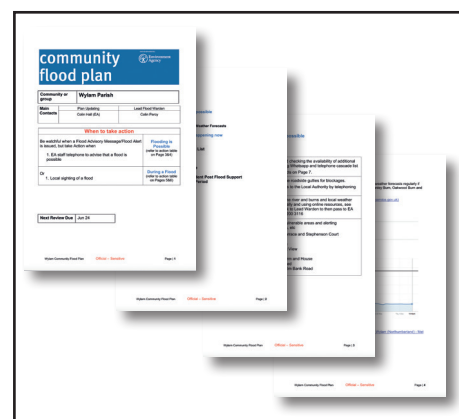
Colin Hall from the Environment Agency presents details of the Community Flood Plan to Wylam residents during the Annual Village Meeting at Wylam Institute

North East Wardens have a direct line through to the Environment Agency's Area Incident Room in Newcastle.

Outside of a flood event, they can help raise awareness of flooding issues in the local community, encourage people to register to receive free flood warnings and provide information to partners about vulnerable people or properties in flood risk areas.

If you are interested in volunteering please contact Colin Hall, Flood Resilience Engagement Officer at the Environment Agency:

northeast_engagement@environment-agency.gov.uk



The Wylam Community Flood Plan advises how to react in the event of flooding in Wylam

To sign up for automated flood alert messages, visit:

<https://www.gov.uk/sign-up-for-flood-warnings>

and enter your location, email address and preferred contact method.

LITTER PICKING

At our recent annual litter pick the Brownies were quite clear in their instructions for future events. They said they were too busy at weekends, so we had a weekday evening of litter collection instead.

We only filled 3 bags, but the Vera crew had been using the playing fields and had done an excellent job of clearing up after themselves. I'm sure we will collect more next time, especially with all the energy and enthusiasm that the Brownies brought to the evening.

The Parish Council is now an official Northumberland County Council (NCC) Litter Group. Across the county, these groups have been gradually increasing their impact and are now looking to join scheduled clean-ups outside their area.

We will prepare a Wylam schedule for litter picks, to allow others to join us, to cover for really bad weather when we are unlikely to have much success, and to offer opportunities to get around the village and meet each other, in high-viz!

Many Wylam residents pick up litter every day. The Parish Council know that without this daily support the litter situation around the village would be much worse. Please keep up the excellent work.

The Parish Council has litter collecting kit. If you would like to borrow some, please contact the Clerk (**contact details on page 12**).

VERA COMES TO WYLAM!



Points Bridge was used extensively during the shoot, with a special platform added to enable cars to access the bridge deck

There was much excitement in Wylam during May and early June when ITV crews arrived in the village to film scenes for the new series of much loved detective drama Vera! The filming centred on Points Bridge, with some other scenes taking place on Wylam Wood Road.

A construction crew built a wooden platform over the old metal rail troughs on one side of the bridge to enable cars to drive onto it, and added 20mph speed limit and one-way signs. The other side of the bridge had bollards and pedestrian/cycle only signs.

A stretch of the Waggonway then had false street lights added to make it appear like a road.



Streelights were added to the Waggonway during filming

Crew and catering facilities were set up on the Jubilee Field, with technical trailers in the field adjoining Points Bridge.

This wasn't the first time that Vera location filming had taken place in Wylam. Take a look at our anniversary timeline on pages 6 & 7 to find out more!



Location crews set up base in fields near to Points Bridge

GREEN MATTERS with LYNNE WOOD

TAKING ACTION ON PLASTICS

It seems that not a day goes by without some plastic horror story hitting the headlines, informing us that rivers and oceans have been poisoned or animal habitats contaminated.

It's easy to become desensitised, imagining plastic isn't a threat or that we're making progress towards a world where all plastic is recyclable. Plastic remains a real threat to our environment though, and there are things we can all do to make a difference, and feel energised.

Here are just some ways you can do your bit:

- Drink tap water instead of bottled.
- Use reusable coffee cups for take-away coffee.
- Avoid buying vegetables wrapped in plastic.
- Get your milk delivered locally.
- Avoid cling film and use reusable containers.

And if you want to do even more, why not consider joining the Parish Council's Climate Action Group - contact the Parish Council Clerk (**contact details on page 12**).

Have a good summer and don't forget to take those reusable shopping bags with you!

WYLAM SUMMER FAIR IS BACK AND AS GOOD AS EVER! ROWENA WARD

Wylam Summer Fair returned in June 2023, for the first time since before the Covid Pandemic, and wasn't it fabulous? It's been so enjoyable bringing the Fair back to life.

We'd like to send a huge thank you to the hundreds who turned out in the glorious sunshine. The new Summer Fair Committee brought fresh ideas and enthusiasm and it really showed. But we wouldn't have been able to do it without the large number of volunteers who contributed before, during and after the day with site preparation, stewarding, litter picking, baking, serving drinks, painting faces and so much more.

More than 100 performers and entertainers took part, and the huge range of food, craft and community stalls meant there was something for everyone.



Ross Hutchinson presents the award in the Swindale Trophy Fun Run to winner Thomas Rees

There were lots of opportunities to join in too with welly wanging, penalty shoot-out, egg & spoon races, the return of the Fun Run and the hilarious and well-fought Tug of War finale.



Sword dancing draws the crowds at Wylam Summer Fair



The tug of war event

All the comments and feedback we received are much appreciated and have already been considered for next year. Speaking of next year, save the date - Saturday, June 22nd.

Help will be needed to prepare for the next Fair, and there are many tasks that need doing throughout the year, something to suit everyone. It's very rewarding organising an event such as this. If you would like to get involved or find out more please contact us at the email address below. You can commit as much or as little time as you want to.

wylamplayingfield@gmail.com



Ken John declares Wylam Summer Fair open

The Fair is Wylam Community Playing Fields Association's (WCPFA) biggest fundraising event and we are delighted to have made around £11,000 profit this year. WCPFA manage the field and its facilities on behalf of the community, funded wholly by events held throughout the year, donations and grant awards.

FALCON CENTRE

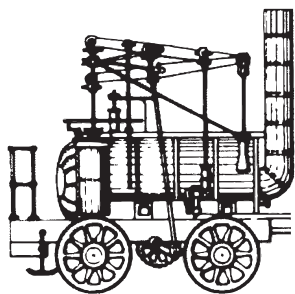


The Falcon Centre is home to Wylam Library and Railway Museum

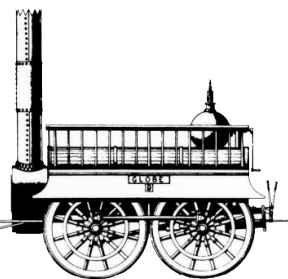
The Parish Council recognises that the Falcon Centre is an important and valued village facility and we are liaising with the County Council, owners of the building, and the Falcon Centre Action Group in relation to its future.

We will do everything we can to preserve and enhance this village facility. We are in correspondence with the County Council to try and determine their future plans for the building and our much-valued Wylam Library, but to date have heard nothing substantive from them.

You may have noticed that the Falcon Centre yard is looking quite neglected at present. On Saturday 23rd September, the Falcon Centre Action Group is organising a working party to clear weed growth and trim overgrown vegetation from the yard and its flower beds. Extra volunteers are very welcome - watch out for details nearer the time.



50 THE WYLAM GLOBE YRs



50 years ago, the first issue of the Wylam Globe was printed. Though the appearance has changed a little since then, the spirit and purpose of the Globe is still exactly the same.

We hope that you enjoy this brief trip into Wylam's past. We could only fit so much into these pages, but if you want to read more, all issues of the Globe since 1973 are available to view as PDFs on the Parish Council website: <https://wylamparishcouncil.org.uk/globe-archive.html>

We have prepared a timeline of news items reported in the Globe each year since 1973. Many thanks to **Doug Hamilton** for his help to select and summarise these articles.

1973 The newly appointed Wylam Parish Council agreed to experiment with a quarterly newsletter, to be called the "Wylam Globe."

1974 The old "Butcher's Bridge" between the Fox & Hounds and Wormald House was removed and rebuilt. Drivers were urged to resist the temptation to speed on the newly straightened road.



1975 Work began to clear the disused platforms and derelict concrete footbridge of the former North Wylam station. The site became the "Country Park Car Park."

1976 William McCutcheon from Wylam, Alabama, USA, visited and confirmed that the Alabama Wylam was named after our Wylam in the 19th century.

1977 Celebrations took place in Wylam for the Queen's Silver Jubilee on one of the hottest days of the year at the newly re-named Jubilee Field. The field was officially re-opened by Dr. Alfred Swindale, who had achieved his own Jubilee in 1974, having worked as village GP for 50 years!



1978 **Public Toilets - Where should they be built?** The positioning of new public toilets was a controversial issue. The former North Wylam station yard and the Jubilee Field were the two possible sites.


1979 Construction started on a bus shelter at Charlie's Corner.

1980 The Parish Council awarded a contract to convert one of the allotments at Hagg Bank into a children's playground.

1981 Mrs Mary J McBeath, probably the oldest resident ever to live in the village died aged 104 years. She had been the housekeeper of the late C. J. W. Blackett.

1982 Hexham Magistrates insisted that major alterations were needed at Wylam Institute to meet fire regulations. A public meeting was arranged to raise funds. The Institute Appeal raised more than £23,000 in just over three months.

1983 A new footbridge leading from the end of Wylam station platform to the Castle Hill Convalescent Home won a special award presented by the Civic Trust.



1984 Conversion of the former mill and bakery into flats was almost complete, with the shop unit let as a hairdressing salon. Laws Stores shop and bakery sadly closed in 1983, resulting in the loss of 14 jobs.


1985 Huge crowds watched the "Evening Star", the last steam locomotive British Rail built, hauling special trains through Wylam to mark the Newcastle and Carlisle Railway's 150 year celebrations.

1986 The Wylam Craft Music Shop in Hexham tried to trace a Wylam man (name unknown) who left an oboe for repair twelve months earlier and had never returned to collect it.

1987 British Telecom advised that all Wylam telephone numbers would be changed by putting 85 in front of the existing numbers, and the dialling code would change from 06614 to 0661.

1988 Barclays Bank emphasised that there were no plans to close the Wylam branch.

1989 The first bottle bank appeared in the Old Station Car Park and was so heavily used that it had to be emptied every two weeks! It was quickly replaced by a larger model.



1990 A house on Dene Terrace West was demolished due to subsidence caused by old coal mines, and a new house was built on the site. The original houses on Dene Terrace cost about £50 when built in 1895. The new house, albeit larger, was on offer at £90,000!

1991 The Bowes family, who ran Blackett House Stores since 1958, retired after 33 years.

1992 The previously unsightly lane behind the Ship Inn was "properly and attractively surfaced for the first time ever". Amongst those funding the work were The Parish Council, Tynedale Council and the Newcastle Brewery.



1993 Three local footpaths were officially recognised by the County Council as public footpaths; the path behind the doctors' surgery on Woodcroft Road; the path from Holeyn Hall Road westwards to Horsley Wood, and the short path from the eastern end of Falcon Terrace to Stephenson Terrace.

1994 A proposal to create a local nature reserve on the unused land at the Haughs, to the west of the riverside allotments, was widely welcomed at a public meeting.

1995 The first "INTERIM NEWSLETTER" was distributed between issues of the Globe to advise residents of important upcoming events, such as Middle School girls' netball coaching sessions.



Wylam Parish Council
INTERIM NEWSLETTER - MARCH 1995

1996 The year of the ramps! To make access easier, ramps were built at the entrance to the Institute, at the Methodist Church and also at the entrance to St Oswin's Church.

1997 A Wylam Map, produced by 150 embroiderers was unveiled at the Institute as the final event of Wylam Institute Centenary celebrations.

1998 The Parish Council decided to employ a part-time "Village Handyperson" to deal with the problems of weeds growing in roadside gullies and on footpaths around the village.

I was only 2 in July 1973 and my brother, Matt, wasn't born, but Mum remembers Dad being very positive about putting the first edition of The Wylam Globe together with his fellow Parish Council members Ellen Jacobson and Joan Taylor. It started as a double-sided sheet, typed out on the Parish Clerk's typewriter.

Over the years it developed into a larger document which, for most of its history, was typeset and printed by The Gilpin Press in Houghton-le-Spring. We remember Dad spending hours writing articles, which were supplemented by those from other residents.

Dad put together the typeset proofs with the man from the printer and laid it all out on our dining table, shuffling sections around the photos to make everything fit into the pages. It was often difficult to get everything to fit! Once it was all laid out, it was stuck down onto the proof pages and sent back for printing. There were often many lengthy discussions between Dad and The Gilpin Press on the final details of the content, as he wanted it to be just right!

Once the Globes were printed, boxes of them were delivered to our house, often on a Friday evening, ready for delivery around the village. One of our rooms was so full of Globes you couldn't shut the door. Various people were co-opted in to deliver Globes, but we definitely delivered our share - probably many thousands over the years! We remember appearing in photos in the Globe, particularly sledging on Engine Dene in Winter 1978/9 with the heaviest snowfall for many years, when the snow in our back garden was over our wellies!

Mum, Matt and I always really look forward to reading the latest Globe to keep up with news from Wylam, Mum's home for 50 years. It's amazing how much has happened in Wylam in that time and it's lovely to see it so well documented!



Barbara Brooks

Beccy, Matt and Barbara Brooks

I received my first copy of the Globe shortly after moving to Wylam, and thoroughly enjoyed reading it. Speaking to other residents, I realised what an icon of Wylam life it was. A few years later I was lucky enough to take on the mantle of editor of the Globe. It's an honour to follow in the footsteps of Philip Brooks, and continue his legacy. I took the opportunity to refresh the design of the Globe a little, but not too much, and I endeavour to ensure it remains true to its roots. I hope that you enjoy the little walk through time we put together for this anniversary issue. As always, we'd love to hear suggestions for future Globes. Please contact Tracey, our Clerk (**details on page 12**).

Martyn Jones
Globe Editor 2020 - present



Four groups fleeing their homes in Ukraine

were able to share the homes of Wylam families. The first guests came from Sumy, Kharkiv and Irpin. A banner placed at Charlie's Corner read "Welcome to Wylam", "You are safe here."

Issue 138 of the Globe launched a photo competition asking for submissions of Wylam photographs to feature as the cover photo on future editions.

The surgery of the Riversdale Practice closed at the end of July and relocated to the Oaklands Medical Centre, Prudhoe.

The Parish Council decided to sell the former Post Office premises. Post Office services had moved to the Spar in 2016.

Philip Brooks died. He served as a Parish Councillor for 40 years and was editor of the Wylam Globe from its conception until 2005.



He set up Wylam Railway Museum, authored several local history publications, steered the project to install the Puffing Billy village entrance signs and organised the first annual village litter pick.

Phase 1 of the Hedley Meadows housing development on the old Wylam Hills Farm site was completed. Construction traffic and road closures had been a source of frustration for nearby residents.

The inaugural Wylam Winter Tales Festival was held "to help brighten things up at the darkest time of year."



The Wylam Hills Farm site got the go-ahead for development. After demolition of most of the existing farm buildings, the overall development was for 35 houses, the retention of the existing farmhouse and the conversion of the stone-built stable block.

100 years since the start of WWI, the War Memorial was steam-cleaned and the plaques treated to bring the Memorial back into good condition.

After 32 years of being printed in black and white, The Wylam Globe appears in colour for the very first time!



Scaffolding moves to the west end of the Institute as work nears completion

Following a number of break-ins to sheds in Wylam and the theft of expensive mowers, Northumbria Police publicised the use of steel "Shed Bars" which could be purchased via the Parish Council.

The Playing Fields Association planned a new play area on the Jubilee Field, including a roundabout, slide and bouncer for toddlers, four swings, a tower climber, a new adventure trail, a shelter and three benches!

A NEW TYNE BRIDGE WEST OF WYLAM BENEFIT OR THREAT?

A plan for a new bridge across the Tyne near the waterworks to replace the existing bridge at Ovingham, with a new road up to the A69, provoked a strong reaction at a packed public meeting.

The Graham family of Wylam Hills Farm left Wylam after almost 80 years. The herding of their cows across the road, twice-daily, to and from the summer grazing meadow was a regular encounter for local motorists.

The County Council introduced parking charges for motorists using the Old Station Car Park of £1 per day. Residents could purchase annual permits for £5.

Despite strong representations from customers, Barclays Bank went ahead with the closure of the Wylam branch after almost a century of operation.



J.A.Stobo & Son celebrated 50 years of trading in Wylam.

Following a serious accident on Wylam Bridge, a safety assessment concluded that it fell below modern safety standards. The bridge was closed to widen the road and replace the railings.



Heavy floods virtually cut Wylam off for a time. Holeyn Hall Road was blocked, with water from Oakwood Burn entering some houses. Deep water blocked the road to Crawcrook, and a landslip between Hagg Bank and West Wylam closed that road.

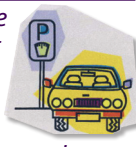


The Tour of Britain Cycle Race saw hundreds of Wylam residents lining the route through the village to see 100 or so riders on the second stage of the eight-stage International race.

A film location unit appeared in the Old Station Car Park as an ITV series starring Brenda Blethyn as DCI Vera Stanhope was filmed in Wylam.

Peter Clarke died. He served on the Parish Council and as volunteer Tree Warden. His most significant legacy was the Wylam Haughs Nature Reserve.

Following local pressure, the County Council advised that parking in the Old Station Car park would be free again for a trial period. The ticket machine was later removed.



A petition by local residents to reduce the speed limit within the village to 20 mph was included in the Globe.

ESSAYS FROM SESSAY - FAMILY HISTORY VISIT TO WYLAM

Wylam residents David and Lynne Petrie were intrigued when a parcel addressed to "The Occupants" arrived at their house earlier this year.

Inside was a copy of "Essays from Sessay", a village history book published in 2016 by the residents of Sessay, a small village in North Yorkshire. The covering letter from the editor of the book, Janet Ratcliffe, explained she was researching the life of Fanny Dupuis, one time resident of 8 Stephenson Terrace, where the Petries now live.

David and Lynne already knew about Fanny Dupuis and had created their own 'House History' back in 2010. They very kindly invited Janet and her husband to lunch to exchange information.

Janet was able to describe Fanny's early life and her relationship with the Dupuis family who lived in Sessay Rectory in the 1890s. Fanny Dupuis, nee Booth, created and edited a magazine called Ad-Lib, which she

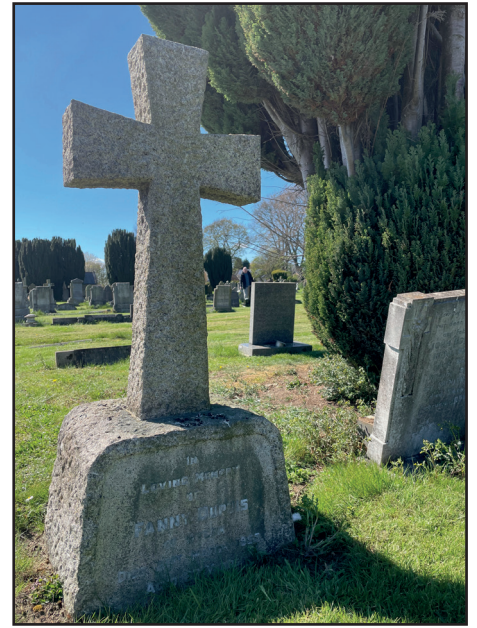
circulated amongst her friendship group. She went on to marry Fred Dupuis, brother of the sisters she co-authored the magazine with, and they had two sons.

Circumstances changed, however, and Fred went off to Ceylon as a tea planter. Fanny came to live at 8 Stephenson Terrace, Wylam, and remained there until her death in 1953.

From their own research, David and Lynne were able to fill in some details of Fanny's later life, with photographs of Fanny during WWI as a Voluntary Aid Detachment (VAD) nurse at Castle Hill Hospital, contributions Fanny had made to Women's Institute recipe books during WWII and, most exciting of all, copies of her paintings. They had also had heard stories of a rather eccentric, tweedy lady who kept either whippets or greyhounds.

The question remained, though, "Why Wylam?" Why had Fanny chosen to live here when all her previous connections were with North Yorkshire. Her family were farmers in Warlaby, near Northallerton, who owned a lot of land and various properties.

Thanks to some internet research, Lynne and Janet think they have found the most likely answer. Fanny's elder sister, Jane, was married to the Reverend Charles Fenwick Thorp, Rector of Ovingham Church in the first part of the twentieth century. It's not clear exactly when Fanny moved here, but it must have been sometime



Fanny's headstone in Ovingham Cemetery

after April 1908 (when Fred went to Ceylon) and before 1911 when she appears in the census in Wylam. Why the marriage split we will never know. There was no divorce and Fred died in his sister's nursing home in Chelsea in 1948. Probate of his will went to Fanny.

The final piece of the puzzle, to find where Fanny was buried, was answered by Tracey Wood, Clerk to Wylam Parish Council, who combed through the Registers and located Fanny's grave in Ovingham Cemetery.

As with all good research, there are always more questions to answer, but rarely do researchers receive such a warm and helpful welcome as Janet and her husband did in Wylam.



Detail from the gravestone of Fanny Dupuis

NEW SHELTER BUILT AT ALLOTMENTS



The new shelter has been built in the central communal area of the allotments

A new shelter has been constructed in the central communal area of Wylam Haughs Allotments.

The shelter was funded by a Parish

Council grant of £603, and was used for the annual allotment barbeque in July. It will be formally opened in August.

MORE HEDGE CUTTING NEEDED

There are lots of places around the village where hedges, shrubs and trees are overhanging pavements and pathways. This makes it difficult and, in some cases, dangerous for pedestrians to walk easily by.

Please check the pathways bordering your own garden, and cut back any overhanging vegetation, remembering that some people are over 6 feet tall, others may be in a wheelchair or pushing a buggy, and that when vegetation is wet, it can hang even lower.

We all have a legal responsibility to ensure that we are not creating an obstruction of this kind.

Thank you for your help.

SAMPLING OF RIVER TYNE WATER QUALITY TO BEGIN AT WYLAM

STEPHEN WESTGARTH



Hopefully the results from sampling will identify the causes of the visible pollution in the Tyne

Wylam Clean Tyne Group has been working hard to clean up our river. As many will know, the Department for Environment, Food & Rural Affairs (DEFRA) refused bathing water status to about 95% of all the inland river groups who applied in Autumn 2022, including our own application.

DEFRA has not given a specific reason for the rejections and is currently being pressed (legally, if necessary) by the Ilkley Clean River Group to provide some clarity and logic on the matter.

It seems likely to most clean river groups that the relatively low numbers of river users at inland sites compared with coastal beaches was the reason for refusal, albeit an inadequate and illogical one in our view.

By the time this issue of the Wylam Globe goes to print, we will have started testing the river water ourselves. The first sampling date was Thursday 29th June when five sites between Ovingham Bridge and Wylam Bridge were tested. Many thanks to all our volunteers who are taking the samples or will do so throughout the summer.

We will be measuring levels of gut bacteria - *escherichia coli*, or *e.coli* for short. These typically come from human or cow faeces, and will identify if the pollution is coming from water companies (sewage discharge) or agricultural practices. We will send the samples by express courier to a licensed laboratory which provides definitive data on bacteria levels in the water. We will share this data, and the guidelines for safe levels, as soon as they are available.

We want to sample fertiliser run off too in the form of nitrates, phosphates, and soap/detergent contamination, but are still clarifying the best way to do this.

Wylam Neighbourhood Plan is being drafted in the near future. If you would like to see a clean river and healthy environment as a part of where you live, then please contribute to it and support the process of getting official recognition of the need to value and clean up the Tyne.

Since our public meeting in March we have had good public support for cleaning up the river, but are always looking for more volunteers. Can you help with writing an occasional piece for the Wylam Globe, sharing news on social media, responding to enquiries, sampling, or talking to as many people as possible including your MP and councillors about how important a clean River Tyne is? If so please get in touch:

drstephenwestgarth@gmail.com

PARISH COUNCILLORS NEEDED!

Wylam Parish Council needs three more Councillors! The Parish Council is an elected body, the first tier of local government closest to the people it serves. The job of your Council is to represent the interests of the whole community. Its members are all volunteers and have joined the Parish Council because they care about Wylam and its community.

What does the Parish Council do?

The aim of the Parish Council is to foster a vibrant and flourishing village, and to improve the quality of life for people living in the Parish. Here are just a few examples, some less glamorous but no less valuable than others:

- Provision of allotments
- Litter bins and litter picks
- A local Nature Reserve
- Grants and donations to local charities and organisations
- Curating Wylam's green spaces
- Funding the provision of public toilets
- Working towards Wylam Net Zero
- Promotion of Wylam's railway and engineering heritage
- Community Flood and Resilience Planning
- Hosting special events
- Managing Ovingham Cemetery
- Lobbying outside organisations on behalf of Wylam
- Commenting on Planning applications

If you are interested in becoming a member of the Parish Council, please get in touch with our Clerk, Tracey, who will supply you with application forms and all the information you need about becoming a Councillor.

NCC COMMUNITY CHEST FUNDING AVAILABLE FOR COMMUNITY GROUPS

Northumberland County Council's Community Chest funding scheme for 2023-24 is now open. One-off grants of up to £5,000 are available.

Constituted community groups, charities, school PTAs and social enterprises are encouraged to apply.

Round 1 closed on 2nd June. The deadlines for Rounds 2 and 3 are 29th September 2023 and 12th January 2024.

Further information on the scheme can be obtained at :

northumberland.gov.uk/Councillors/Community-Chest.aspx

You can also contact:

communitychest@northumberland.gov.uk

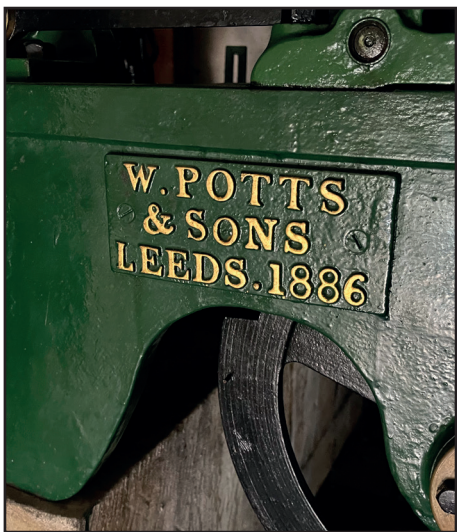
ST OSWIN'S CLOCK CHIMES TO BE REPAIRED



St Oswin's clock has been stopped at 12 noon for some time

Something has been missing from the soundscape of our village recently. You may have noticed the absence of the quarter-hour clock chimes ringing from St Oswin's tower and that the hands of the clock have been stuck at 12 noon for many months.

The clock mechanism was installed during the construction of the church and dates from 1886. It was manufactured in Leeds by the renowned firm of William Potts & Sons. Potts were responsible for manufacturing hundreds of clocks which can still be found in church towers and civic buildings across Britain and around the world, including that at Newcastle Cathedral.



The clock mechanism dates back to 1886 when the tower was built

The clock has two external dials, one facing towards Church Rd, and one towards Main Rd, which are



The clock mechanism is housed inside a large cabinet within the ringing chamber of the bell tower

mechanically connected to the main clock mechanism, located within a cabinet in the ringing chamber of the tower.

The clock strikes the Cambridge (or Westminster) Quarters on bells 1, 2, 3 and 6 of the six bells within the tower, which also date from the construction of the church. The hours are struck on bell 6, the heaviest bell, known as the "tenor".



A lever to pull back the clock chime hammers while the bells are being rung

Originally the three "trains" of the mechanism (one to drive the clock hands, one to sound the quarter hour chimes and one for the hour strikes) were driven by gravity, with large weights descending a shaft within the tower which would have to be wound back up to the top again every week.

In the 1960s, most of the mechanical components were removed, and electric motors fitted to drive the trains instead, though the main frame of the original mechanism

remains. This work was carried out by the same firm, Potts, who installed the clock 80 year earlier! After 60 years of service, it is the 1960s motor driving the clock hands which has failed and needs to be replaced.

Wylam Parish Council has funded the £2,450 cost of the repair which will be undertaken by the Cumbria Clock Company, based in Penrith. They will install a brand new motor and replace worn gears.

Work is expected to be completed by the end of July, so we should hear the sound of the clock chimes drifting across the village again during the late summer evenings.

SUMMER 2023 AT WYLAM LIBRARY

Calling all children! Come along to the Library every week this summer to get involved in this year's sports-themed Summer Reading Challenge: "Ready, Set, Read!" Read 6 books during the school summer holiday. There are weekly prize draws – each week, you can win a family swimming ticket for any Northumberland Leisure Centre pool. The big prize at the end of the Challenge is a family ticket to Alnwick Garden.

The Library, at the Falcon Centre on Falcon Terrace, is open on Tuesdays and Thursdays from 10.30am to 4.30pm (closed for lunch from 12.30 – 1.30pm) and on alternate Saturdays from 9.30am – 12pm. Even if you have lots of books at home, there is always another interesting one to be found, along with a good range of audio books, large-print books,

A PLAN FOR NATURE RECOVERY AT CHARLIE'S CORNER

LIZ
BRAY

Wylam Parish Council's Climate Action Group has been meeting to discuss ways to address the climate crisis. Nature Recovery is one of the priorities globally and nationally.

Here are suggestions for making Charlie's Corner in the centre of the village into a more attractive and welcoming place for people and wildlife, whilst still welcoming responsible dog owners to use the area:

- Phase 1: Plant a hedge of native species inside the perimeter wall – free hedging packs are available to local communities and volunteers could plant the hedge and maintain it.
- Phase 2: Add some low growing shrubs alongside, under the line of Rowan trees, plus a decorative low fence to discourage dogs and trampling. Funding would be needed for these plants and the fence. Again, the area could be maintained by volunteers.
- Plant More bulbs, plus some wildflower plug plants.
- Add another bench or two, more bird feeders, a bird bath.
- A mural has been suggested to brighten up the bus shelter.

Please do share your views on this proposal by sending your comments to the Parish Clerk (**see page 12**).

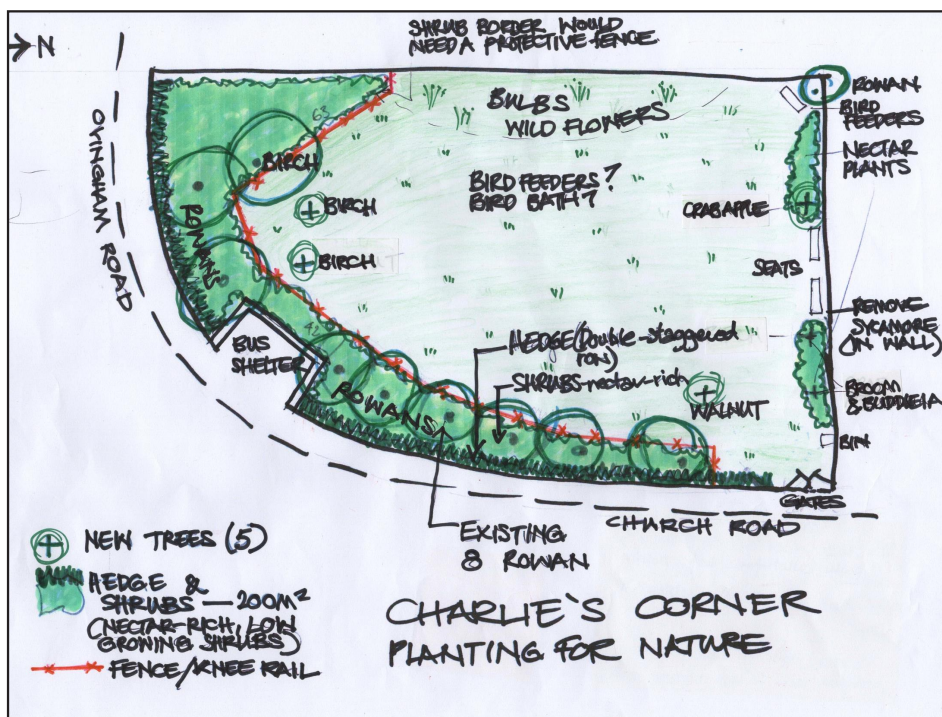


Wylam Library

jigsaws to borrow and magazines to read. Tea and coffee are available free of charge and you can even play a game of chess, draughts or cards!

Also on offer at the Falcon Centre are Chair Yoga classes (Thursday mornings at 11am) Watercolour Painting (Tuesday afternoons) and Wylam's Railway Museum.

Our Librarian, Margaret Kelly, looks forward to welcoming you there soon!



A proposition to improve biodiversity at Charlie's Corner by planting native hedging and shrubs

AN APPEALING TRADITION!

KEVIN
WEBSTER



The tower at St Oswin's houses a ring of six bells, cast at the John Taylor Bell Foundry in Loughborough in 1885

St Oswin's Church has six bells, the largest weighing over a ton. They are hung in the English Style with rope and wheel allowing "changes" to be rung. For those interested, a fuller explanation can be found at:

www.cccbr.org.uk/changeringing/

Over the past year we have rung for most Sunday services and other festival services including Good Friday, Ascension Day, All Saints Day, the Christingle service, Blessing of the Crib and Midnight Mass on Christmas Eve.

We also continue to ring on special occasions, the most notable recent ringing being to mark the death of Queen Elizabeth II. Ringing took place on 9th September, the day following the death of Her Majesty, and also on 19th September prior to her funeral. All of the ringing during this period was with the bells fully muffled - a leather muffler is attached to the clappers of the bells to produce a softer sound.

We also rang to celebrate the Coronation of His Majesty King Charles III on 6th May 2023.

I am sure you will agree that the regular ringing of the bells adds to the character of the village. Sadly, following the COVID pandemic, the number of regular ringers has diminished. In order to ensure that this tradition continues we need new members to join the band.

We meet for practices on Monday evenings at 7.30pm and would gladly welcome anyone wanting to "have a go" or just come to have a look at the bells. Bell ringing is one of the few pastimes where training is free, and you even get paid when you ring for a wedding! It's also good exercise for the body and the brain!

If you would like to find out more, or to arrange for the bells to be rung to mark a significant anniversary, then please get in touch :

Kevin Webster (Tower Captain)

wylambells@gmail.com

07875 685 085

NATURE RESERVE - OAK TREES



Three of the suppressed oaks are due to be felled in the Autumn

Following a site visit and advice from NCC's Trees and Woodlands Officer and an extended period of public consultation, the Parish Council has taken the difficult decision to fell three of the eight oak trees growing on the western border of Wylam Allotments.

Responses were received from four residents and the Allotments Association. It has long been acknowledged that the oak trees were originally planted too close together. As a result, three of them are suppressed and in part due to pruning of lower limbs in the past, show poor form and will be felled in Autumn 2023.

In making this decision, the Parish Council has had to balance a number of factors: the views expressed by residents (those who wanted all the Oaks to be kept and those in favour of felling all of them), the importance of local food growing, the contribution of semi-mature trees to carbon capture and biodiversity and the prudent use of public money.

At the Annual Village Meeting, a resident suggested using the wood from the felled oaks to make nesting boxes, enabling parts of those trees to continue to contribute to promoting biodiversity on the Nature Reserve.

This excellent suggestion will be followed up by the Parish Council.

WYLAM INSTITUTE COMMITTEE MEMBERS NEEDED



Wylam Institute urgently needs new committee members

Wylam Institute is a wonderful resource for the village, hosting many activities for all ages. The Institute is run by a Committee of volunteers. At the Wylam Summer Fair, Committee Chair Sue Nicholson was presented with an award for her many years of service to the Institute. Several other long-serving members of the Committee feel that the time is fast approaching when they will have to step aside to make way for younger volunteers. The Committee is appealing for people to come forward to serve on the Committee to keep the Institute functioning for the benefit of the residents of Wylam and its many users from outside the village. If you think you could help please contact the Institute Office:

(01661) 852 498

wylaminstitute2@gmail.com

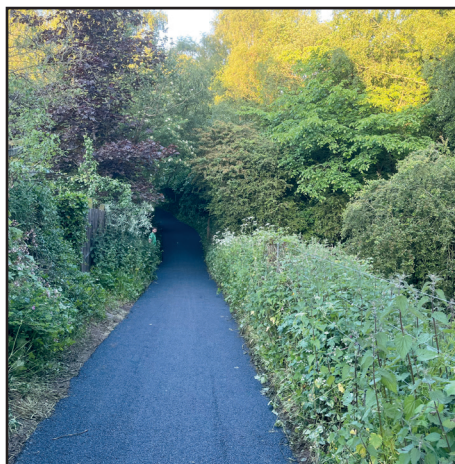
ENTER OUR COVER PHOTO COMPETITION!

Why not enter the Wylam Globe cover photo competition which will resume in the next issue.

Your photo could be dropping through letterboxes across Wylam!



FINAL RESURFACING WORK COMPLETE



The final section resurfaced was the slope up to Hagg Bank

In early June, the stretch of Wylam Waggonway from Points Bridge up to Hagg Bank was resurfaced, thereby completing resurfacing of the full stretch from Hagg Bank to Newburn.

GET IN TOUCH!

We'd love to hear from you!

Please contact :

Tracey Wood

Clerk to the Parish Council



clerkwylamparishcouncil@gmail.com



Wylam Institute
Church Road
Wylam
NE41 8AP

Tel : (01661) 852 498

www.wylamparishcouncil.org.uk



Wylam Parish Council



Designed and edited by:

Martyn Jones

Printed for Wylam Parish Council by:

**Robson Print
Hexham, NE46 3PU**

Coincidentally our printer, Robson Print, are also celebrating their 50th anniversary this year!

- Photos should be :
- Taken in, or around, Wylam
 - Ideally landscape orientation
 - JPEG or PSD format, with as high resolution as possible
 - Colour or black & white
 - Your own work (no copyright images)
 - Not manipulated (beyond minor retouch)
 - Not containing identifiable persons

Please send entries to the Parish Council Clerk via email (see information to the right of this page)

Parish Councillors will choose a winning entry prior to publication of the next issue of The Wylam Globe. Note that there is no cash prize.